



Catalog: OM271487

Scan to get more validated information



AREG Antibody

Catalog: OM271487

☐ 100ug

Product profile

Product name	AREG Antibody
Antibody Type	Primary Antibodies
Product description	AREG is a member of the epidermal growth factor family. It is an autocrine growth factor as well as a mitogen for astrocytes, Schwann cells, and fibroblasts. It is related to epidermal growth factor (EGF) and transforming growth factor alpha (TGF-alpha). This protein interacts with the EGF/TGF-alpha receptor to promote the growth of normal epithelial cells and inhibits the growth of certain aggressive carcinoma cell lines. This protein is associated with a psoriasis-like skin phenotype. ¹⁾ Shim,J.Y., J. Korean Med. Sci. 23 (5), 857-863 (2008)
Immunogen	This AREG antibody is generated from rabbits immunized with a KLH conjugated synthetic peptide between 222-252 amino acids from the C-terminal region of human AREG.

Key Feature

Clonality	Polyclonal
Isotype	Ig
Host Species	Rabbit
Tested Applications	IHC-P ,WB
Species Reactivity	Human
Concentration	1 mg/ml

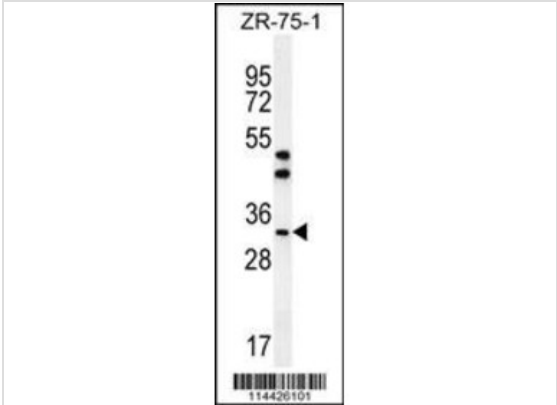
Target Information

Gene Symbol	AREG
Alternative Names	Amphiregulin, AR, Colorectum cell-derived growth factor, CRDGF, AREG, SDGF
Molecular Weight(MW)	28 kDa

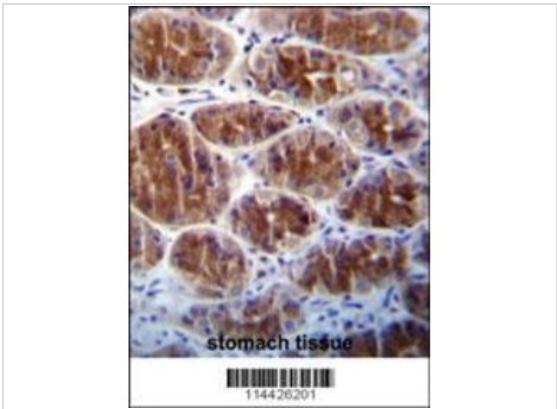
Database Links

Entrez Gene	3/4
Protein Accession	P15514

Application



Application
Western blot analysis in ZR-75-1 cell line lysates (35ug/lane).



Application
AREG Antibody immunohistochemistry analysis in formalin fixed and paraffin embedded human stomach tissue followed by peroxidase conjugation of the secondary antibody and DAB staining.

Application Notes For WB starting dilution is: 1:1000 For IHC-P starting dilution is: 1:10~50:

Additional Information

Form	Liquid
Storage Instructions	Store at 4 °C for three months and -20 °C, stable for up to one year. As with all antibodies care should be taken to avoid repeated freeze thaw cycles. Antibodies should not be exposed to prolonged high temperatures.
Storage Buffer	Supplied in PBS with 0.09% (W/V) sodium azide.
Note	The product is for research use only,not for use in diagnostic or therapeutic procedures.

OmnimAbs.com