



Catalog: OM153247

Scan to get more validated information



# Actin Antibody (H-300) PE

Catalog: OM153247

☐ 100ul

## Product profile

Product name	Actin Antibody (H-300) PE
Antibody Type	Primary Antibodies
Modification Notes	All eukaryotic cells express Actin, which often constitutes as much as 50% of total cellular protein. Actin filaments can form both stable and labile structures and are crucial components of microvilli and the contractile apparatus of muscle cells. While lower eukaryotes, such as yeast, have only one Actin gene, higher eukaryotes have several isoforms encoded by a family of genes. At least six types of Actin are present in mammalian tissues and fall into three classes. $\alpha$ -Actin expression is limited to various types of muscle, whereas $\beta$ - and $\gamma$ -Actin are the principle constituents of filaments in other tissues. Members of the small GTPase family regulate the organization of the Actin cytoskeleton. Rho controls the assembly of Actin stress fibers and focal adhesion. Rac regulates Actin filament accumulation at the plasma membrane. Cdc42 stimulates formation of filopodia.

## Key Feature

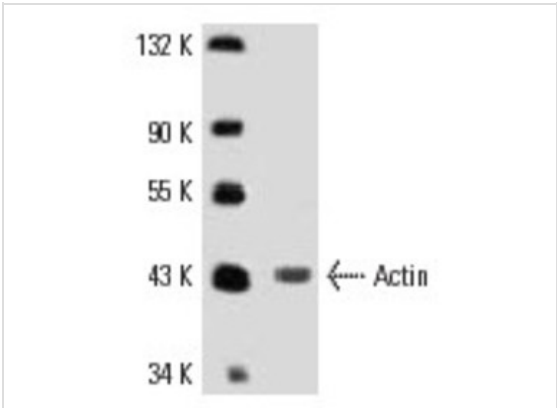
Clonality	Polyclonal
Isotype	IgG
Host Species	Rabbit
Tested Applications	WB ,IP ,IF ,FC ,ELISA
Species Reactivity	Human Mouse Rat
Concentration	1mg/ml
Purification	Affinity purified

## Target Information

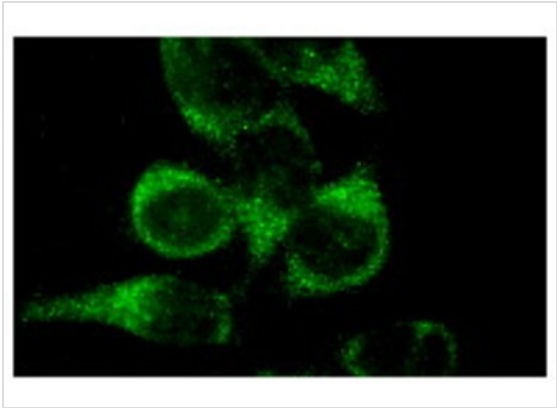
Alternative Names	epitope corresponding to amino acids 76-375 mapping at the C-terminus of Actin of human origin
Tissue Specificity	epitope corresponding to amino acids 76-375 mapping at the C-terminus of Actin of human origin

## Database Links

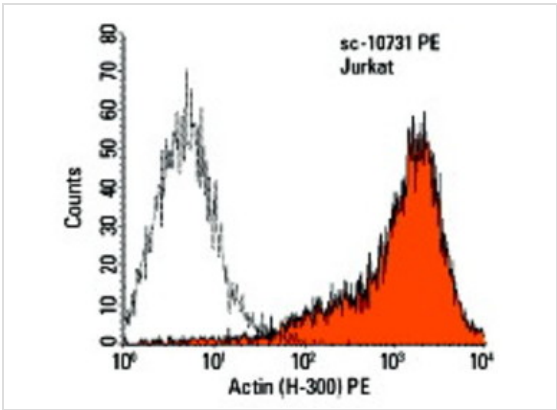
Application



**Application**  
Western blot analysis of Actin expression in Sol8 whole cell lysate.



**Application**  
Immunofluorescence staining of methanol-fixed HeLa cells showing cytoplasmic localization.



**Application**  
Intracellular FCM analysis of fixed and permeabilized Jurkat cells. Black line histogram represents the isotype control, normal rabbit IgG: .

Application Notes	reactive with a broad range of Actin isoforms of mouse, rat, human, zebrafish, C. elegans, Drospohila and Xenopus origin by WB, IP, IF, FCM and ELISA; also reactive with additional species, including equine, canine, bovine, porcine and avian:
-------------------	--

Additional Information

Form	Liquid
Storage Instructions	For short-term storage, store at 4° C. For long-term storage, aliquot and store at -20°C or below. Avoid multiple freeze-thaw cycles.
Storage Buffer	phosphate buffered saline , pH 7.4, 150mM NaCl, 0.02% sodium azide and 50% glycerol.
Note	The product is for research use only,not for use in diagnostic or therapeutic procedures.

# OmnimAbs.com

---

order@Omnimabs.com

506 N. GARFIELD AVE #210 ALHAMBRA, CA 91801

This product is for research use only and is not approved for use in humans or in clinical diagnosis. Primary Antibodies are guaranteed for 1 year from date of receipt

---

