



Catalog: OM638959

Scan to get more validated information



Aldh1A1

Catalog: OM638959

☐ 100 µl

Product profile

Product name	Aldh1A1
Antibody Type	Primary Antibodies
Product description	<p>Aldehyde dehydrogenases (ALDHs) mediate NADP⁺-dependent oxidation of aldehydes into acids during the detoxification of alcohol-derived acetaldehyde; metabolism of corticosteroids, biogenic amines and neurotransmitters; and lipid peroxidation. ALDH1A1, also designated retinal dehydrogenase 1 (RALDH1 or RALDH1), aldehyde dehydrogenase family 1 member A1, aldehyde dehydrogenase cytosolic, ALDHIII, ALDH-E1 or ALDH E1, is a retinal dehydrogenase that participates in the biosynthesis of retinoic acid (RA). There are two major liver isoforms of ALDH1 that can localize to cytosolic or mitochondrial space. The ALDH1A2 (RALDH2, RALDH2-T) gene produces three different transcripts and also catalyzes the synthesis of RA from retinaldehyde. ALDH1A3 (ALDH6, RALDH3, ALDH1A6) is a 37 kb gene that consists of 13 exons and produces a major transcript of approximately 3.5 kb most abundant in salivary gland, stomach and kidney. ALDH3A1 (stomach type, ALDH3, ALDHIII) forms a cytoplasmic homodimer that preferentially oxidizes aromatic aldehyde substrates. ALDH genes upregulate as a part of the oxidative stress response, and appear to be abundant in certain tumors that have an accelerated metabolism toward chemotherapy agents.</p>
Immunogen	Peptide

Key Feature

Clonality	Polyclonal
Isotype	IgG
Host Species	Rabbit
Tested Applications	WB ,ICC ,IHC ,FC
Species Reactivity	Human Mouse Rat
Concentration	1 mg/mL

Target Information

Alternative Names	Acetaldehyde dehydrogenase 1 antibody AHD2 antibody AL1A1_HUMAN antibody ALDC antibody Aldeh
-------------------	----------------------------------------------------------------------------------------------

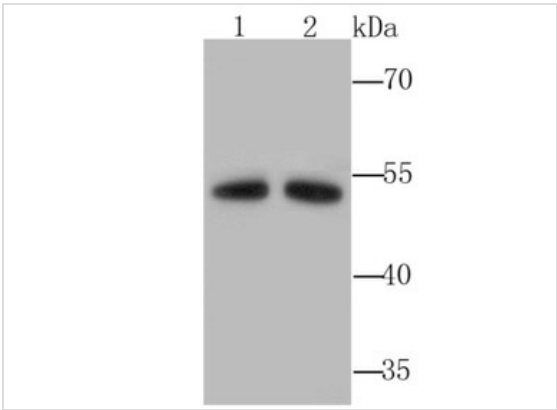
yde dehydrogenase 1 family member A1 antibody Aldehyde dehydrogenase 1 soluble antibody Aldehyde dehydrogenase 1A1 antibody Aldehyde dehydrogenase antibody Aldehyde dehydrogenase cytosolic anti body Aldehyde dehydrogenase family 1 member A1 antibody Aldehyde dehydrogenase liver cytosolic anti body ALDH 1 antibody ALDH 1A1 antibody ALDH class 1 antibody ALDH, liver cytosolic antibody ALDH-E 1 antibody ALDH1 A1 antibody ALDH1 antibody ALDH11 antibody ALDH1A1 antibody ALHDII antibody cy tosolc antibody epididymis luminal protein 12 antibody epididymis luminal protein 9 antibody epididymis s ecretory sperm binding protein Li 53e antibody HEL-S-53e antibody MGC2318 antibody PUMB1 antibody RALDH 1 antibody RaIDH1 antibody Retinal dehydrogenase 1 antibody

Molecular Weight(MW)	55 kDa
Cellular Localization	Cytoplasm.

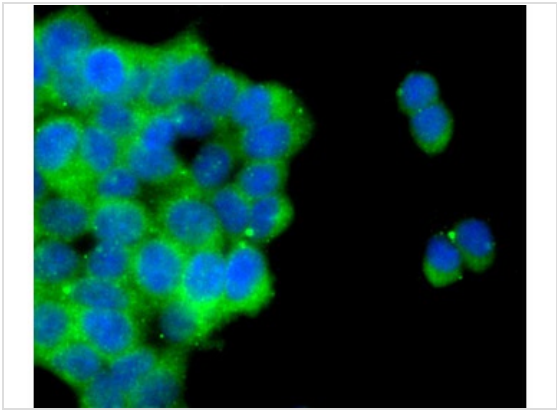
Database Links

SwissProt ID	P00352
	P24549
	P51647

Application

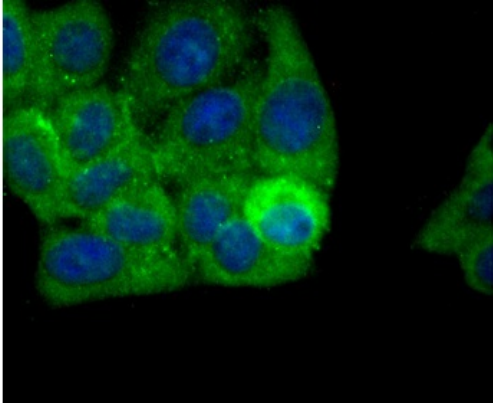
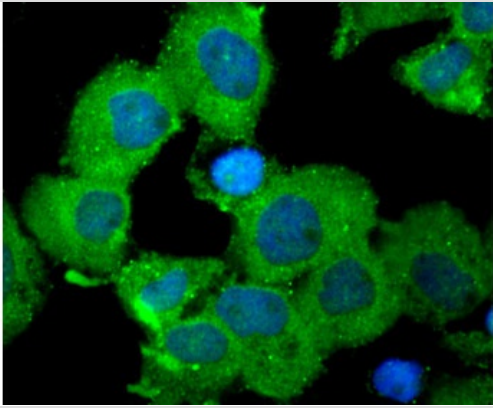


Application
Fig1: Western blot analysis of Aldh1A1 on 2 liver (1) and 2 kidney (2) tissue lysates using anti-Aldh1A1 antibody at 1/1,000 dilution.



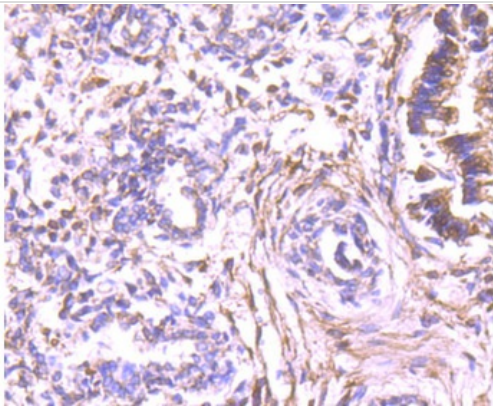
Application
Fig2: ICC staining Aldh1A1 in 293T cells (green). The nuclear counter stain is DAPI (blue). Cells were fixed in paraformaldehyde, permeabilised with 0.25% Triton X100/PBS.

Application
Fig3: ICC staining Aldh1A1 in A431 cells (green). The nuclear counter stain is DAPI (blue). Cells were fixed in paraformaldehyde, permeabilised with 0.25% Triton X100/PBS.



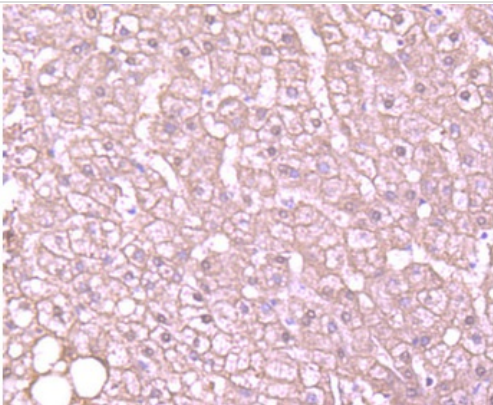
Application

Fig4: ICC staining Aldh1A1 in HepG2 cells (green). The nuclear counter stain is DAPI (blue). Cells were fixed in paraformaldehyde, permeabilised with 0.25% Triton X100/PBS.



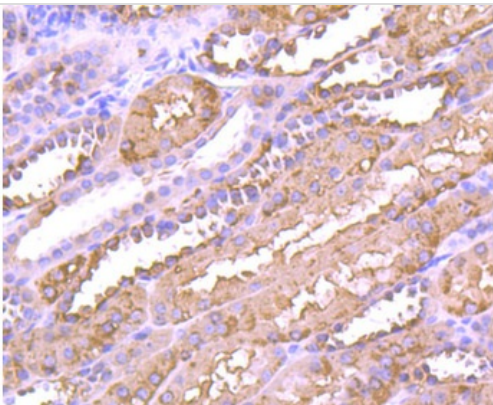
Application

Fig5: Immunohistochemical analysis of paraffin-embedded human lung tissue using anti-Aldh1A1 antibody. Counter stained with hematoxylin.



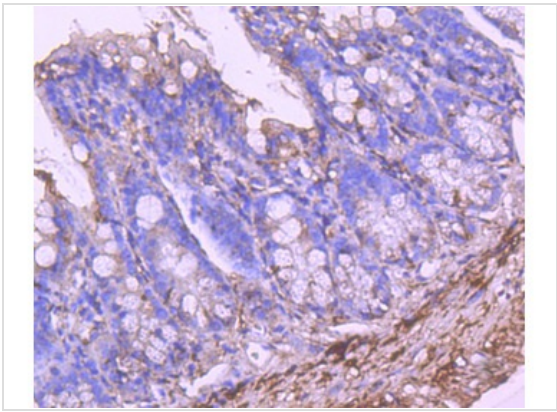
Application

Fig6: Immunohistochemical analysis of paraffin-embedded human liver tissue using anti-Aldh1A1 antibody. Counter stained with hematoxylin.

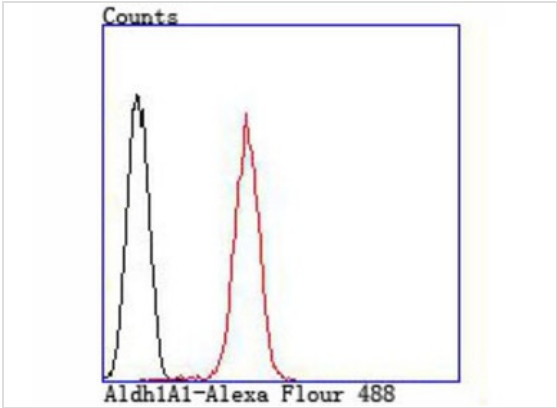


Application

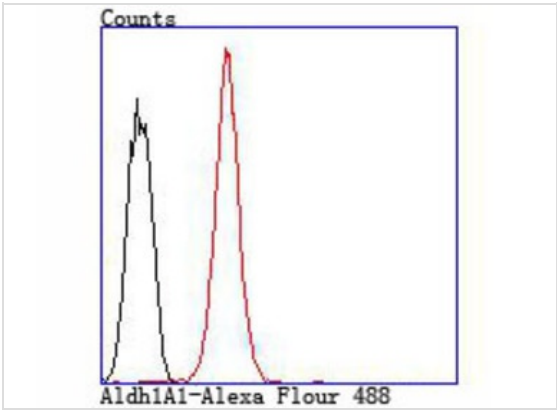
Fig7: Immunohistochemical analysis of paraffin-embedded human kidney tissue using anti-Aldh1A1 antibody. Counter stained with hematoxylin.



Application
 Fig8: Immunohistochemical analysis of paraffin-embedded 2 colon tissue using anti-Aldh1A1 antibody. Counter stained with hematoxylin.



Application
 Fig9: Flow cytometric analysis of A549 cells with Aldh1A1 antibody at 1/100 dilution (red) compared with an unlabelled control (cells without incubation with primary antibody;black).



Application
 Fig10: Flow cytometric analysis of HepG2 cells with Aldh1A1 antibody at 1/100 dilution (red) compared with an unlabelled control (cells without incubation with primary antibody; black).

Positive Control	2 liver tissue lysate, 2 kidney tissue lysate, 293T , A431, HepG2, human liver tissue, human lung tissue, human kidney tissue, 2 colon tissue, A549.
Application Notes	WB: 1:500-1:1000 ICC: 1:50-1:200 IHC: 1:50-1:200 FC: 1:50-1:200

Additional Information

Form	Liquid
Storage Instructions	Store at +4°C after thawing. Aliquot store at -20°C or -80°C. Avoid repeated freeze / thaw cycles.
Storage Buffer	1*TBS (pH7.4), 1%BSA, 40%Glycerol. Preservative: 0.05% Sodium Azide.
Note	The product is for research use only,not for use in diagnostic or therapeutic procedures.

OmnimAbs.com

order@Omnimabs.com
506 N. GARFIELD AVE #210 ALHAMBRA, CA 91801
This product is for research use only and is not approved for use in humans or in clinical diagnosis. Primary Antibodies are guaranteed for 1 year from date of receipt
