



Catalog: OM626570

Scan to get more validated information



Alpha-tubulin

Catalog: OM626570

☐ 100 μ l

Product profile

Product name	Alpha-tubulin
Antibody Type	Primary Antibodies
Product description	The cytoskeleton consists of three types of cytosolic fibers: microtubules, microfilaments (actin filaments), and intermediate filaments. Globular tubulin subunits comprise the microtubule building block, with α/β -tubulin heterodimers forming the tubulin subunit common to all eukaryotic cells. Acetylation of alpha chains at Lys-40 stabilizes microtubules and affects affinity and processivity of microtubule motors. This modification has a role in multiple cellular functions, ranging from cell motility, cell cycle progression or cell differentiation to intracellular trafficking and signaling.
Immunogen	peptide

Key Feature

Clonality	Polyclonal
Isotype	IgG
Host Species	Rabbit
Tested Applications	WB ,IHC ,ICC ,FC ,IF
Species Reactivity	Human Mouse Rat Zebra Fish
Concentration	1 mg/mL.

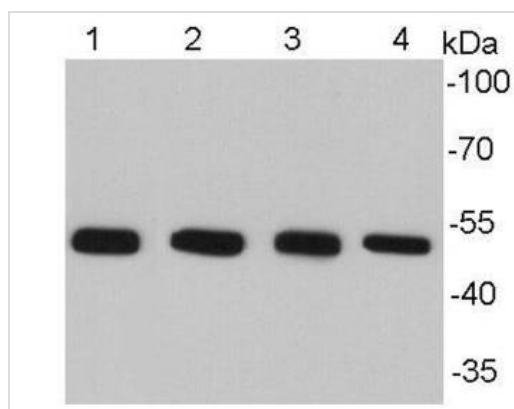
Target Information

Alternative Names	TUBA1 antibody TUBA1A antibody TUBA2 antibody TUBA3 antibody TUBA3C antibody TUBA4A antibody Tubulin, alpha 1a antibody Tubulin, alpha 3c antibody Tubulin, alpha 4a antibody
Molecular Weight(MW)	50 kDa
Cellular Localization	Cytoplasm ,cytoskeleton

Database Links

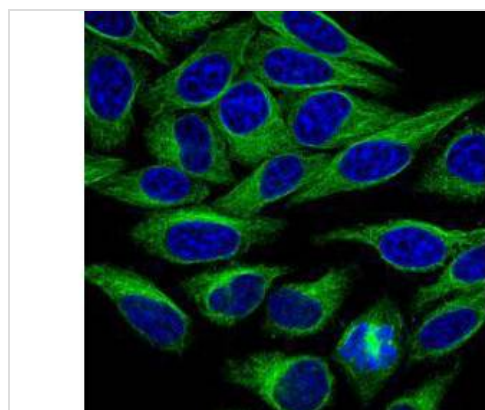
UniProt	P04818
---------	--------

Application



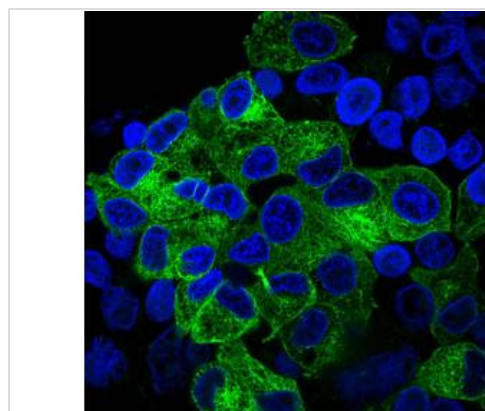
Application

Fig1: Western blot analysis of Alpha-tubulin on different cell lysates using anti-Alpha-tubulin antibody at 1/10000 dilution. Positive control: Lane 1: NIH/3T3 Lane2: HepG2 Lane3: PC12 Lane 4: Hela



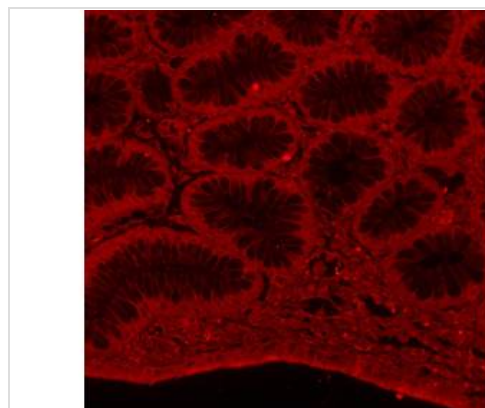
Application

Fig2: ICC staining of Alpha-tubulin in HepG2 cells (green). The nuclear counter stain is DAPI (blue). Cells were fixed in paraformaldehyde, permeabilised with 0.25% Triton X100/PBS.



Application

Fig3: ICC staining of Alpha-tubulin in Hela cells (green). The nuclear counter stain is DAPI (blue). Cells were fixed in paraformaldehyde, permeabilised with 0.25% Triton X100/PBS.

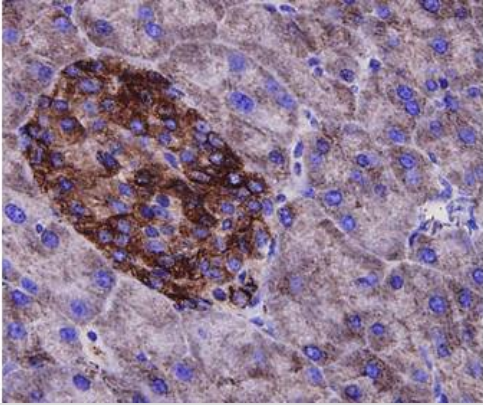
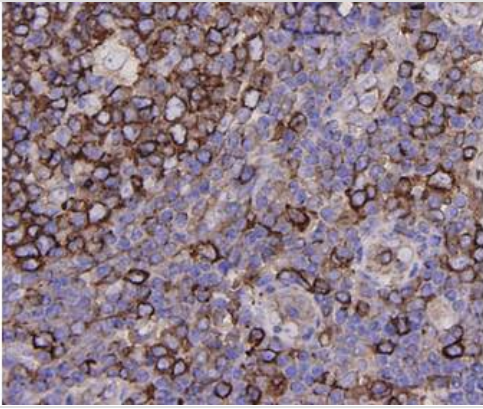


Application

Fig4: IHC-P image of Alpha-tubulin staining with Alpha-tubulin antibody on tissue sections from human stomach. The secondary used was an Alexa-Fluor 555 conjugated goat anti-rabbit polyclonal.

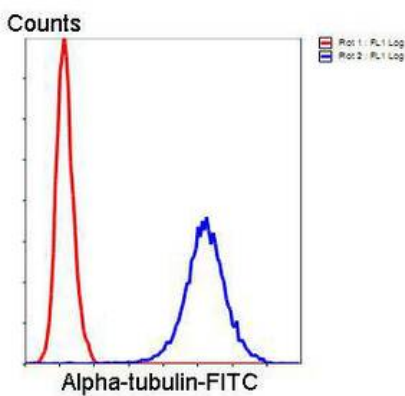
Application

Fig5: Immunohistochemical analysis of paraffin-embedded human tonsil tissue using anti-Alpha-tubulin antibody. Counter stained with hematoxylin.



Application

Fig6: Immunohistochemical analysis of paraffin-embedded mouse pancreas tissue using anti-Alpha-tubulin antibody. Counter stained with hematoxylin.



Application

Fig7: Flow cytometric analysis of Hela?cells with Alpha-tubulin antibody at 1/100 dilution (blue) compared with an unlabelled control (cells without incubation with primary antibody; red). Goat anti rabbit IgG (FITC) was used as the secondary antibody.

Positive Control NIH/3T3, Hela, HepG2, PC12, human stomach tissue, human tonsil tissue, mouse pancreas tissue

Application Notes **WB:**1:5,000-1:10,000

ICC:1:200-1:500

IHC:1:200-1:500

IF:1:200-1:500

FC:1:50-1:100

Additional Information

Form Liquid

Storage Instructions Store at +4°C after thawing. Aliquot store at -20°C or -80°C. Avoid repeated freeze / thaw cycles.

Storage Buffer 1*TBS (pH7.4), 1%BSA, 40%Glycerol. Preservative: 0.05% Sodium Azide.

Note The product is for research use only,not for use in diagnostic or therapeutic procedures.

OmnimAbs.com

order@Omnimabs.com
506 N. GARFIELD AVE #210 ALHAMBRA, CA 91801
This product is for research use only and is not approved for use in humans or in clinical diagnosis. Primary Antibodies are guaranteed for 1 year from date of receipt
