



Catalog: OM296308

Scan to get more validated information



Anti-Blue (2D2F11) Mouse mAb (HRP Conjugate)

Catalog: OM296308

☐ 100ug

Product profile

Product name	Anti-Blue (2D2F11) Mouse mAb (HRP Conjugate)
Antibody Type	Secondary Antibodies
Product description	Anti-Blue (2D2F11) Mouse mAb is conjugated to the carbohydrate groups of horseradish peroxidase (HRP) via its amine groups. This product has been optimized to detect proteins labeled with remazol blue.

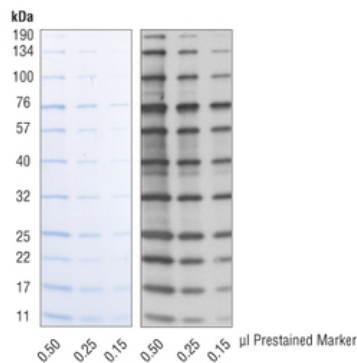
Key Feature

Clonality	Monoclonal
Isotype	Cocktail
Host Species	Alligator
Tested Applications	ChIP ,FC ,IF ,IHC ,IP ,WB
Species Reactivity	Human
Concentration	1 mg/ml
Purification	Affinity purified

Target Information

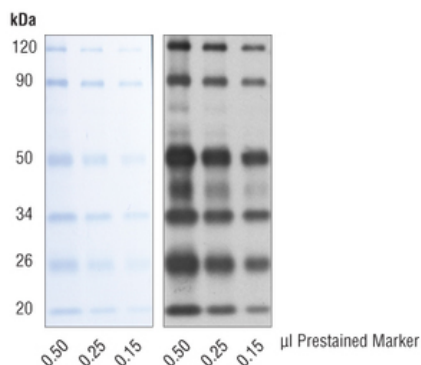
Tissue Specificity	Anti-Blue (2D2F11) Mouse mAb (HRP Conjugate) recognizes remazol blue dye attached to proteins.
--------------------	--

Application



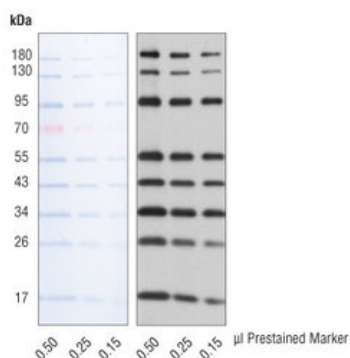
Application

Titration of Prestained Protein Marker, Broad Range (11-190 kDa) on a 4-20% Tris-glycine gradient SDS-polyacrylamide gel (left). Western Blot analysis of using Anti-Blue (2D2F11) Mouse mAb (HRP Conjugate) (right).



Application

Titration of Pierce™ Prestained Protein MW markers [ThermoFisher #26612] on a 4-20% Tris-glycine gradient SDS-polyacrylamide gel (left). Western Blot analysis of Pierce™ Prestained Protein MW markers [ThermoFisher #26612] using Anti-Blue (2D2F11) Mouse mAb (HRP Conjugate) (right).



Application

Titration of PageRuler™ Prestained Protein ladder, 10 to 180 kDa [ThermoFisher #26616] on a 4-20% Tris-glycine gradient SDS-polyacrylamide gel (left). Western Blot analysis of PageRuler™ Prestained Protein ladder, 10 to 180 kDa [ThermoFisher #26616] using Anti-Blue (2D2F11) Mouse mAb (HRP Conjugate) (right).

Additional Information

Storage Instructions

Application Dilutions Western Blotting 1:1000 Storage: Supplied in 136 mM NaCl, 2.6 mM KCl, 12 mM sodium phosphate (pH 7.4) dibasic, 2 mg/ml BSA, and 50% glycerol. Store at -20°C . Do not aliquot the antibody.

Storage Buffer

phosphate buffered saline , pH 7.4, 150mM NaCl, 0.02% sodium azide and 50% glycerol.

Note

The product is for research use only, not for use in diagnostic or therapeutic procedures.

OmnimAbs.com

order@Omnimabs.com

506 N. GARFIELD AVE #210 ALHAMBRA, CA 91801

This product is for research use only and is not approved for use in humans or in clinical diagnosis. Primary Antibodies are guaranteed for 1 year from date of receipt

