



Catalog: OM642060

Scan to get more validated information



# Anti-CHK2 antibody

Catalog: OM642060

☐ 100 ul ☐ 50 ul

## Product profile

Product name	Anti-CHK2 antibody
Antibody Type	Primary Antibodies
Immunogen	Recombinant Proteins

## Key Feature

Clonality	Monoclonal
Isotype	IgG
Host Species	Mouse
Tested Applications	ELISA ,ICC/IF ,IHC ,WB
Species Reactivity	Human Rabbit
Concentration	1 mg/ml
Purification	Protein A

## Target Information

Gene Symbol	CHEK2
Gene Synonyms	CDS1; LFS2; RAD53; hCds1; HuCds1; PP1425
Gene Full Name	checkpoint kinase 2

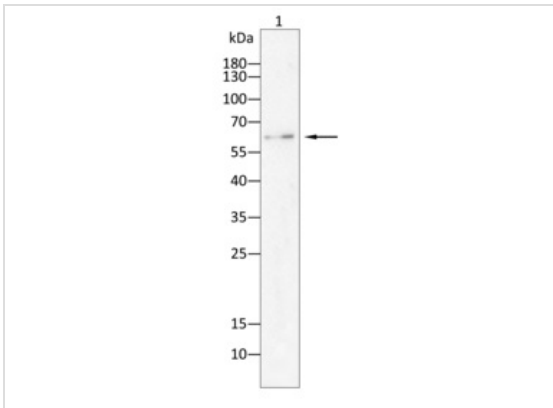
Gene Summary	<p>In response to DNA damage and replication blocks, cell cycle progression is halted through the control of critical cell cycle regulators. The protein encoded by this gene is a cell cycle checkpoint regulator and putative tumor suppressor. It contains a forkhead-associated protein interaction domain essential for activation in response to DNA damage and is rapidly phosphorylated in response to replication blocks and DNA damage. When activated, the encoded protein is known to inhibit CDC25C phosphatase, preventing entry into mitosis, and has been shown to stabilize the tumor suppressor protein p53, leading to cell cycle arrest in G1. In addition, this protein interacts with and phosphorylates BRCA1, allowing BRCA1 to restore survival after DNA damage. Mutations in this gene have been linked with Li-Fraumeni syndrome, a highly penetrant familial cancer phenotype usually associated with inherited mutations in TP53. Also, mutations in thi</p>
--------------	--

s gene are thought to confer a predisposition to sarcomas, breast cancer, and brain tumors. This nuclear protein is a member of the CDS1 subfamily of serine/threonine protein kinases. Several transcript variants encoding different isoforms have been found for this gene. [provided by RefSeq, Apr 2012]

<b>Molecular Weight(MW)</b>	61 kDa
<b>Source</b>	Mouse
<b>Cellular Localization</b>	Nucleus

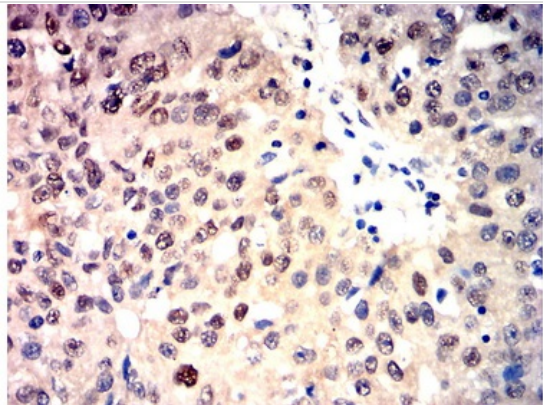
## Application

---



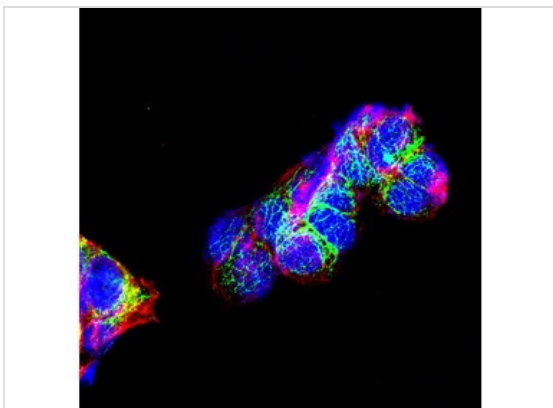
### WB

Western blot analysis using CHK2 antibody against Hep G2 (1) cell lysate.



### IHC

Immunohistochemical analysis of paraffin-embedded prostate cancer tissues using CHK2 antibody with DAB staining.



### ICC/IF

Immunofluorescence analysis of HepG2 cells using CHK2 antibody (green). Blue: DAPI fluorescent DNA dye. Red: Actin filaments have been labeled with Alexa Fluor- 555 phalloidin.

<b>Application Notes</b>	<b>WB:</b> 1:200-1:2000
	<b>IHC:</b> 1:200-1:1000
	<b>ICC/IF:</b> 1:100-1:500

## Additional Information

---

<b>Form</b>	Liquid
-------------	--------

<b>Storage Instructions</b>	Shipped at 4°C. Store at +4°C short term (1-2 weeks). Store at -20°C long term. Avoid freeze / thaw cycle .
<b>Storage Buffer</b>	Purified antibody in PBS with 0.05% sodium azide.
<b>Note</b>	The product is for research use only,not for use in diagnostic or therapeutic procedures.

# OmnimAbs.com

---

order@Omnimabs.com

506 N. GARFIELD AVE #210 ALHAMBRA, CA 91801

This product is for research use only and is not approved for use in humans or in clinical diagnosis. Primary Antibodies are guaranteed for 1 year from date of receipt

---