



Catalog: OM642490

Scan to get more validated information



# Anti-YEATS4 antibody

Catalog: OM642490

☐ 100ul

## Product profile

Product name	Anti-YEATS4 antibody
Antibody Type	Primary Antibodies
Immunogen	Polypeptide

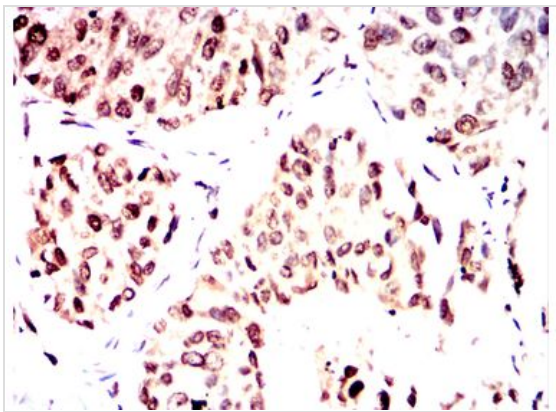
## Key Feature

Clonality	Polyclonal
Isotype	IgG
Host Species	Rabbit
Tested Applications	ELISA ,IHC
Species Reactivity	Human Mouse Rat
Concentration	1mg/ml
Purification	Protein A

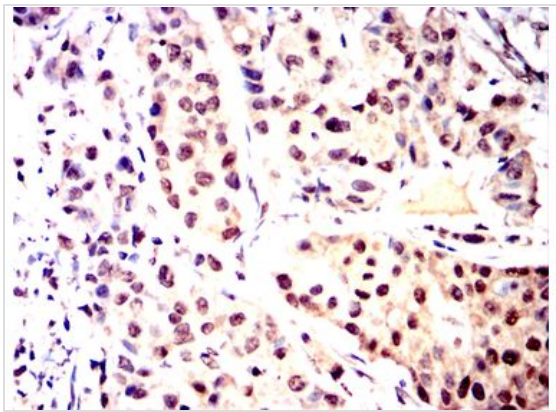
## Target Information

Gene Symbol	YEATS4
Gene Synonyms	YAF9; GAS41; NUBI-1; 4930573H17Rik; B230215M10Rik
Gene Full Name	YEATS domain containing 4
Gene Summary	The protein encoded by this gene is found in the nucleoli. It has high sequence homology to human MLLT1, and yeast and human MLLT3 proteins. Both MLLT1 and MLLT3 proteins belong to a class of transcription factors, indicating that the encoded protein might also represent a transcription factor. This protein is thought to be required for RNA transcription. This gene has been shown to be amplified in tumors. Alternative splicing results in multiple transcript variants encoding different isoforms. [provided by RefSeq, Jul 2014]
Molecular Weight(MW)	26KD
Cellular Localization	Nucleus

Application



**IHC**  
Immunohistochemical analysis of paraffin-embedded lung cancer tissues using YEATS4 antibody with DAB staining.



**IHC**  
Immunohistochemical analysis of paraffin-embedded breast cancer tissues using YEATS4 antibody with DAB staining.

Application Notes	IHC:1:200-1:2000
Additional Information	
Form	Liquid
Storage Instructions	Shipped at 4°C. Store at +4°C short term (1-2 weeks). Store at -20°C long term. Avoid freeze / thaw cycle
Storage Buffer	Purified antibody in PBS with 0.05% sodium azide.
Note	The product is for research use only,not for use in diagnostic or therapeutic procedures.

OmnimAbs.com

order@Omnimabs.com  
506 N. GARFIELD AVE #210 ALHAMBRA, CA 91801  
This product is for research use only and is not approved for use in humans or in clinical diagnosis. Primary Antibodies are guaranteed for 1 year from date of receipt