



Catalog: OM296280

Scan to get more validated information



Anti-rabbit IgG (H+L), F(ab')₂ Fragment (Alexa Fluor® 488 Conjugate)

Catalog: OM296280

☐ 100ug

Product profile

Product name	Anti-rabbit IgG (H+L), F(ab') ₂ Fragment (Alexa Fluor® 488 Conjugate)
Antibody Type	Secondary Antibodies
Product description	Anti-Rabbit IgG (H+L) F(ab') ₂ Fragment was conjugated to Alexa Fluor® 488 fluorescent dye under optimal conditions and formulated at 1 mg/ml. This F(ab') ₂ fragment results in less non-specific binding to cells through Fc receptors.

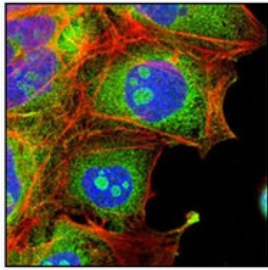
Key Feature

Clonality	Monoclonal
Isotype	Cocktail
Host Species	Goat
Tested Applications	ChIP ,FC ,IF ,IHC ,IP ,WB
Species Reactivity	Rabbit
Concentration	1 mg/ml
Purification	Affinity purified

Target Information

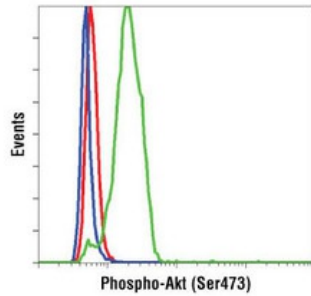
Tissue Specificity	F(ab') ₂ fragments are prepared from goat antibodies that have been adsorbed against pooled human serum, mouse serum, plasmacytoma/hybridoma proteins and purified human paraproteins.
--------------------	---

Application



Application

Confocal immunofluorescent analysis of P19 cells using LIN28A Antibody detected with Anti-Rabbit IgG (H+L), F(ab')₂ Fragment (Alexa Fluor® 488 Conjugate) (green). Actin filaments have been labeled with DY-554 phalloidin (red). Blue pseudocolor = DRAQ5® (fluorescent DNA dye).



Application

Flow cytometric analysis of Jurkat cells, untreated (green) or treated with LY294002, Wortmannin and U0126 (blue), using Phospho-Akt (Ser473) (D9E) Rabbit mAb detected with Anti-Rabbit IgG (H+L), F(ab')₂ Fragment (Alexa Fluor® 488 Conjugate) and compared to a nonspecific negative control antibody (red).

Application Notes

The optimal dilution of the anti-species antibody should be determined for each primary antibody by titration. However, a final dilution of 1:250 - 1:1000 should yield acceptable results for immunofluorescent and flow cytometry assays.

Additional Information

Form	Liquid
Storage Instructions	Storage: Supplied in 0.1 M sodium phosphate, 0.1 M sodium chloride, pH 7.5, 5 mM sodium azide. Store at 4°C. Do not aliquot the antibody. Protect from light. Do not freeze.
Storage Buffer	phosphate buffered saline , pH 7.4, 150mM NaCl, 0.02% sodium azide and 50% glycerol.
Note	The product is for research use only, not for use in diagnostic or therapeutic procedures.

OmnimAbs.com

order@Omnimabs.com

506 N. GARFIELD AVE #210 ALHAMBRA, CA 91801

This product is for research use only and is not approved for use in humans or in clinical diagnosis. Primary Antibodies are guaranteed for 1 year from date of receipt