



Catalog: OM296309

Scan to get more validated information



Anti-rabbit IgG (H+L), F(ab')₂ Fragment (Alexa Fluor® 647 Conjugate)

Catalog: OM296309

☐ 100ug

Product profile

Product name	Anti-rabbit IgG (H+L), F(ab') ₂ Fragment (Alexa Fluor® 647 Conjugate)
Antibody Type	Secondary Antibodies
Product description	Anti-rabbit IgG (H+L) F(ab') ₂ Fragment was conjugated to Alexa Fluor® 647 fluorescent dye under optimal conditions and formulated at 2 mg/ml. This F(ab') ₂ fragment results in less non-specific binding to cells through Fc receptors.

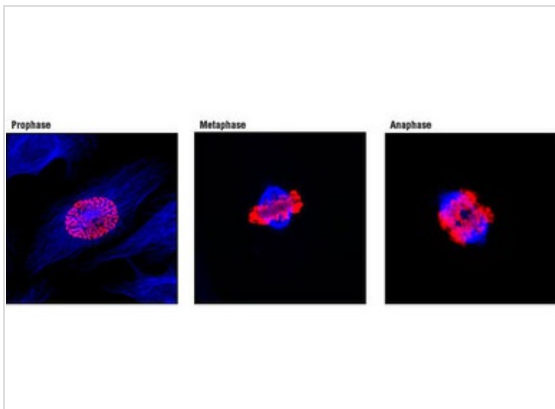
Key Feature

Clonality	Monoclonal
Tested Applications	WB ,IP ,IHC ,IF ,FC ,ChIP
Species Reactivity	Rabbit
Concentration	1 mg/ml
Purification	

Target Information

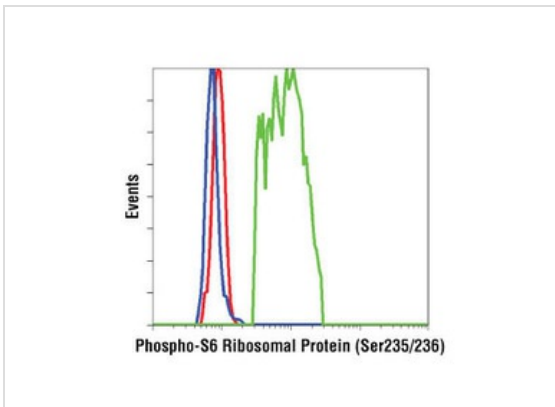
Tissue Specificity	F(ab') ₂ fragments are prepared from goat antibodies that have been adsorbed against pooled human serum, mouse serum, plasmacytoma/hybridoma proteins and purified human paraproteins.
--------------------	---

Application



Application

Confocal immunofluorescent analysis of mitotic HeLa cells using β -Tubulin (9F3) Rabbit mAb detected with Anti-rabbit IgG (H+L), F(ab')₂ Fragment (Alexa Fluor® 647 Conjugate) (blue) and Phospho-Histone H3 (Ser10) (D2C8) XP® Rabbit mAb (Alexa Fluor® 555 Conjugate) (red).



Application

Flow cytometric analysis of Jurkat cells, untreated (green) or treated with LY294002 #9901, Wortmannin and U0126 (blue), using Phospho-S6 Ribosomal Protein (Ser235/236) (D57.2.2E) XP® Rabbit mAb detected with Anti-rabbit IgG (H+L), F(ab')₂ Fragment (Alexa Fluor® 647 Conjugate) compared to a nonspecific negative control antibody (red).

Additional Information

Storage Instructions

The optimal dilution of the anti-species antibody should be determined for each primary antibody by titration. However, a final dilution shown below should yield acceptable results for immunofluorescent and flow cytometry assays:

Immunofluorescent: 1:500 - 1:2000

Flow Cytometry: 1:250 - 1:1000

Storage: Supplied in 0.1 M sodium phosphate, 0.1 M sodium chloride, pH 7.5, 5 mM sodium azide. Store at 4°C. Do not aliquot the antibody. Protect from light. Do not freeze.

Storage Buffer

phosphate buffered saline , pH 7.4, 150mM NaCl, 0.02% sodium azide and 50% glycerol.

Note

The product is for research use only, not for use in diagnostic or therapeutic procedures.

OmnimAbs.com

order@Omnimabs.com

506 N. GARFIELD AVE #210 ALHAMBRA, CA 91801

This product is for research use only and is not approved for use in humans or in clinical diagnosis. Primary Antibodies are guaranteed for 1 year from date of receipt