



Catalog: OM272167

Scan to get more validated information



BAD Antibody

Catalog: OM272167

☐ 100ug

Product profile

Product name	BAD Antibody
Antibody Type	Primary Antibodies
Product description	BAD Antibody: Members in the Bcl-2 family are critical regulators of apoptosis by either inhibiting or promoting cell death. Bcl-2 homology 3 (BH3) domain containing pro-apoptotic proteins, such as Bax, Bid, and Bik, form a growing subclass of the Bcl-2 family. Another such protein is the Bcl-2-antagonist of cell death (Bad). Bad regulates apoptosis by forming heterodimers with anti-apoptotic proteins Bcl-2 and Bcl-xL, thereby preventing them from binding with Bax. Bad activity is regulated by its phosphorylation; it is inactivated by kinases such as Akt and MAP kinase and thus promotes cell survival, whereas JNK-induced phosphorylation promotes the apoptotic role of Bad.1) Cory S, Huang DCS, and Adams JM. The Bcl-2 family: roles in cell survival and oncogenesis. Oncogene 2003; 22:8590-607.
Immunogen	Bad antibody was raised against a peptide corresponding to 15 amino acids near the C-terminus of human Bad. The immunogen is located within amino acids 90 - 140 of BAD.

Key Feature

Clonality	Polyclonal
Isotype	IgG
Host Species	Rabbit
Tested Applications	ELISA ,IF ,IHC-P ,WB
Species Reactivity	Human Mouse Rat
Concentration	1 mg/ml
Purification	Affinity purified

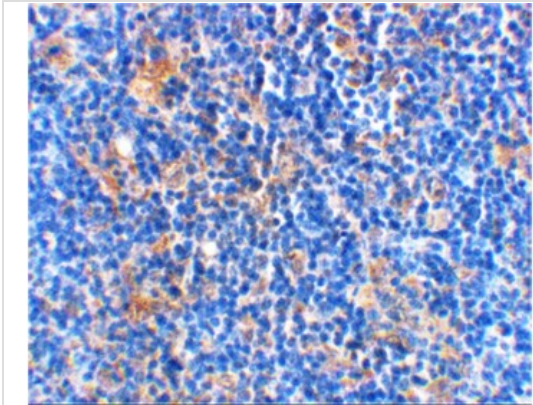
Target Information

Gene Symbol	BAD
Alternative Names	BAD Antibody: BBC2, BCL2L8, BBC6, Bcl2 antagonist of cell death, Bcl-2-binding component 6, BAD
Sequence Similarities	2) Cat. No. 1471 - Rat Thymus Tissue Lysate

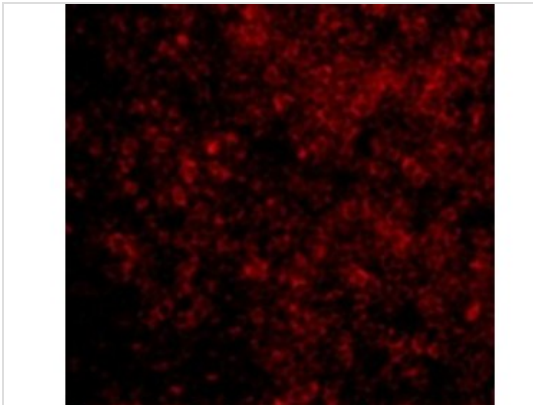
Database Links

Entrez Gene	572
Protein Accession	Q92934

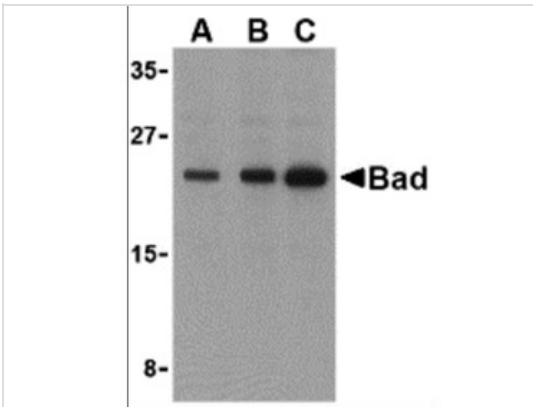
Application



Application
Immunohistochemical staining of rat thymus using Bad at 2 µg/mL.



Application
Immunofluorescence of BAD in Rat Thymus cells with BAD antibody at 10 µg/mL.



Application
Western blot analysis of Bad in T24 cell lysates with Bad antibody at (A) 0.5, (B) 1, and (C) 2 µg/mL.

Positive Control	1) Cat. No. 1213 - T24 Cell Lysate
Application Notes	Bad antibody can be used for detection of Bad by Western blot at 0.5 to 2 µg/mL. Antibody can also be used for immunohistochemistry starting at 2 µg/mL. For immunofluorescence start at 10 µg/mL.:

Additional Information

Form	Liquid
------	--------

Storage Instructions	BAD antibody can be stored at 4 °C for three months and -20 °C, stable for up to one year. As with all anti bodies care should be taken to avoid repeated freeze thaw cycles. Antibodies should not be exposed to prolonged high temperatures.
Storage Buffer	BAD Antibody is supplied in PBS containing 0.02% sodium azide.
Note	The product is for research use only,not for use in diagnostic or therapeutic procedures.

OmnimAbs.com

order@Omnimabs.com
506 N. GARFIELD AVE #210 ALHAMBRA, CA 91801
This product is for research use only and is not approved for use in humans or in clinical diagnosis. Primary Antibodies are guaranteed for 1 year from date of receipt