



Catalog: OM272164

Scan to get more validated information



BAD (phospho Ser91/128) Antibody

Catalog: OM272164

☐ 100ug

Product profile

Product name	BAD (phospho Ser91/128) Antibody
Antibody Type	Primary Antibodies
Product description	The protein encoded by BAD gene is a member of the BCL-2 family. BCL-2 family members are known to be regulators of programmed cell death. This protein positively regulates cell apoptosis by forming hetero dimers with BCL-xL and BCL-2, and reversing their death repressor activity. Proapoptotic activity of this protein is regulated through its phosphorylation. Protein kinases AKT and MAP kinase, as well as protein phosphatase calcineurin were found to be involved in the regulation of this protein. Alternative splicing of this gene results in two transcript variants which encode the same isoform. ¹) Wang H.-G., Cell 87:629-638(1996).
Immunogen	BAD (phospho Ser91/128) antibody was raised against a peptide sequence around phosphorylation site of Serine 91 (E-P-S (p)-P-F) derived from Human BAD or Serine 128 (E-P-S (p)-P-F) derived from Mouse BAD.

Key Feature

Clonality	Polyclonal
Isotype	IgG
Host Species	Rabbit
Tested Applications	IHC ,WB
Species Reactivity	Human Mouse Rat
Concentration	1 mg/ml
Purification	Affinity purified

Target Information

Gene Symbol	BAD
Alternative Names	BAD, BBC6, BCL2L8, Bcl- XL/Bcl-2 associated death promoter
Molecular Weight(MW)	22 kDa

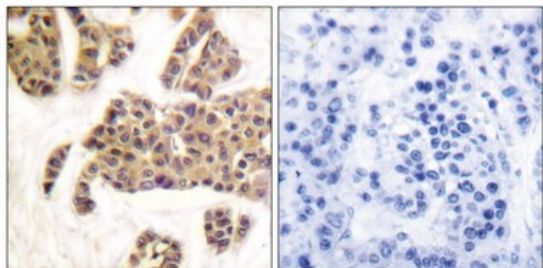
Tissue Specificity

The antibody detects endogenous levels of BAD only when phosphorylated at serine 91/ serine 128.

Database Links

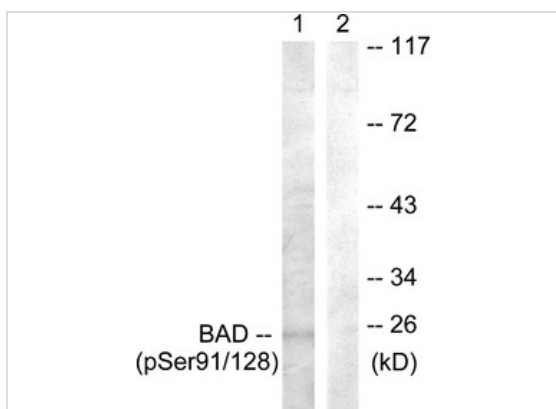
Entrez Gene	572
Protein Accession	NP_004313.1

Application



Application

Immunohistochemical analysis of paraffin-embedded human breast carcinoma tissue using BAD (Phospho-Ser91/128) antibody (left) or the same antibody preincubated with blocking peptide (right).



Application

Western blot analysis of extracts from COS7 cells treated with TNF-a using BAD (Phospho-Ser91/128) Antibody. The lane on the right is treated with the antigen-specific peptide.

Application Notes

Western Blot: 1:500~1:1000, Immunohistochemistry: 1:50~1:100:

Additional Information

Form	Liquid
Storage Instructions	Store antibody at -20°C for up to one year.
Storage Buffer	Antibody supplied in phosphate buffered saline (without Mg ²⁺ and Ca ²⁺), pH 7.4, 150mM NaCl, 0.02% sodium azide and 50% glycerol.
Note	The product is for research use only, not for use in diagnostic or therapeutic procedures.

OmnimAbs.com

This product is for research use only and is not approved for use in humans or in clinical diagnosis. Primary Antibodies are guaranteed for 1 year from date of receipt

