



Catalog: OM272562

Scan to get more validated information



BMAL1 Antibody

Catalog: OM272562

☐ 100ug

Product profile

Product name	BMAL1 Antibody
Antibody Type	Primary Antibodies
Immunogen	Recombinant protein encoding amino acids 1-310 of human ARNTL

Key Feature

Clonality	Monoclonal
Isotype	IgG1
Host Species	Mouse
Tested Applications	ELISA ,IHC ,WB
Species Reactivity	Human
Concentration	1 mg/ml
Purification	Affinity purified

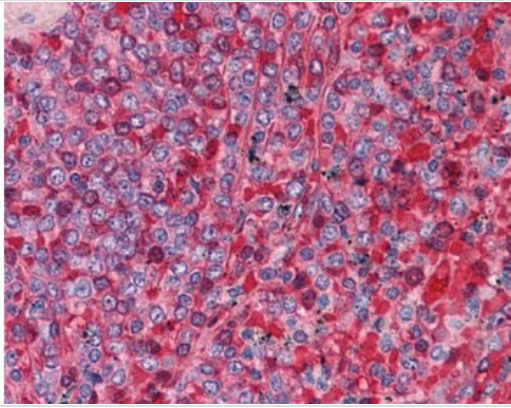
Target Information

Gene Symbol	ARNTL
Alternative Names	ARNTL, BHLH-PAS protein JAP3, BHLHe5, BMAL1c, JAP3, PASD3, Member of PAS protein 3, MOP3, TIC, Brain and muscle ARNT-like 1, Member of PAS superfamily 3

Database Links

Entrez Gene	406
Protein Accession	O00327

Application

**Application**

Immunohistochemistry of human spleen tissue stained using BMAL1 Monoclonal Antibody.

Application Notes

BMAL1 antibody can be used in immunohistochemistry starting at 2.5 µg/mL.:

Additional Information

Form	Liquid
Storage Instructions	BMAL1 antibody should be stored long term (months) at -20 °C and short term (weeks) at 4 °C. As with all antibodies avoid freeze/thaw cycles.
Storage Buffer	0.03% sodium azide
Note	The product is for research use only, not for use in diagnostic or therapeutic procedures.

OmnimAbs.com

order@Omnimabs.com

506 N. GARFIELD AVE #210 ALHAMBRA, CA 91801

This product is for research use only and is not approved for use in humans or in clinical diagnosis. Primary Antibodies are guaranteed for 1 year from date of receipt