



Catalog: OM638970

Scan to get more validated information



# Bcl-2

Catalog: OM638970

☐ 100 µl

## Product profile

|                     |   |
|---------------------|---|
| Product name        | Bcl-2   |
| Antibody Type       | Primary Antibodies  |
| Product description | The Bcl-2 family of proteins regulate apoptosis by controlling mitochondrial permeability and release of cytochrome c. Bcl-2 is an anti-apoptotic protein that resides in the outer mitochondrial wall and inhibits release of cytochrome c (1). Over-expression of Bcl-2 has been shown to promote cell survival by suppressing apoptosis. It has been documented that bcl-2 becomes deregulated in tumor cells as a result of translocation into the immunoglobulin heavy-chain locus and is therefore activated in B cell malignancies (2). It has also been shown that post-translational modification of Bcl-2, phosphorylation at serine 70, may be required to render its full and/or enhanced anti-apoptotic effect (3, 4). |
| Immunogen           | peptide   |

## Key Feature

|                     |                      |
|---------------------|----------------------|
| Clonality           | Polyclonal           |
| Isotype             | IgG                  |
| Host Species        | Rabbit               |
| Tested Applications | WB ,ICC ,IHC ,FC ,IP |
| Species Reactivity  | Human Mouse          |
| Concentration       | 1 mg/mL.             |

## Target Information

|                      |  |
|----------------------|--|
| Alternative Names    | Apoptosis regulator Bcl 2 antibody Apoptosis regulator Bcl-2 antibody Apoptosis regulator Bcl2 antibody AW986256 antibody B cell CLL/lymphoma 2 antibody B cell leukemia/lymphoma 2 antibody Bcl-2 antibody Bcl2 antibody BCL2_HUMAN antibody C430015F12Rik antibody D630044D05Rik antibody D830018M01 Rik antibody Leukemia/lymphoma, B-cell, 2 antibody Oncogene B-cell leukemia 2 antibody PPP1R50 antibody Protein phosphatase 1, regulatory subunit 50 antibody |
| Molecular Weight(MW) | 26kDa  |

**Cellular Localization**

Nucleus membrane, Mitochondrion outer membrane Endoplasmic reticulum membrane

**Database Links****SwissProt ID**

P10415

**Application****Application**

Fig1: Western blot analysis of Jurkat cell lysate using anti-Bcl-2.

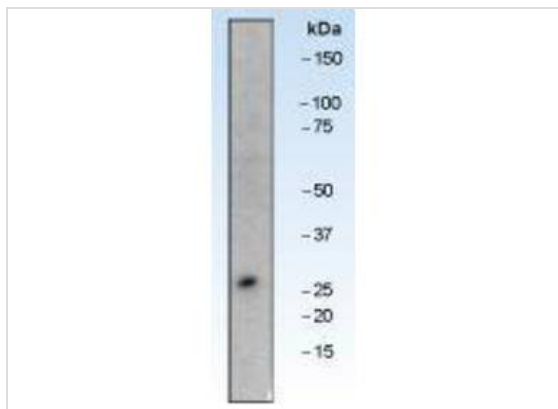
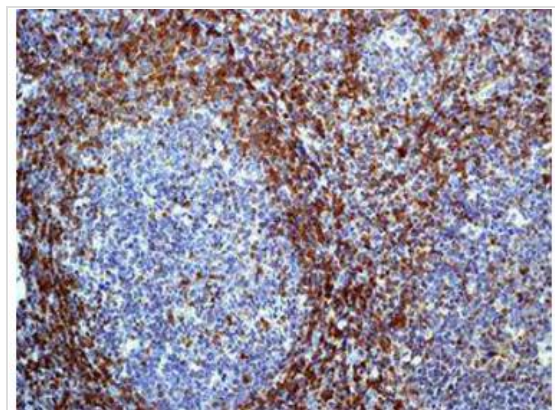
**Application**

Fig2□ Immunohistochemical analysis of paraffin-embedded human tonsil tissue using anti-Bcl-2.

**Positive Control**

Jurkat, human tonsil tissue

**Application Notes****WB:**1:1,000**ICC:**1:200**IHC:**1:100-200**IP:**1:50**FC:**1:100**Additional Information****Form**

Liquid

**Storage Instructions**

Store at -20 °C. Stable for 12 months from date of receipt

**Storage Buffer**

1\*TBST (pH7.4), 0.5%BSA, 40%Glycerol. Preservative: 0.05% Sodium Azide.

**Note**

The product is for research use only,not for use in diagnostic or therapeutic procedures.

order@Omnimabs.com

506 N. GARFIELD AVE #210 ALHAMBRA, CA 91801

This product is for research use only and is not approved for use in humans or in clinical diagnosis. Primary Antibodies are guaranteed for 1 year from date of receipt

