



Catalog: OM638971

Scan to get more validated information



Bcl-x

Catalog: OM638971

☐ 100 µl

Product profile

Product name	Bcl-x
Antibody Type	Primary Antibodies
Product description	Bcl-x, a member of the Bcl-2 protein family, inhibits cell death, or apoptosis (1). Bcl-x is expressed as two isoforms, Bcl-xL and Bcl-xS, and is typically present in the cytosol in association with the mitochondrial membrane. Bcl-xL forms heterodimers with various proteins, including Bax, Bak and Bcl-2 (2). It has been found that heterodimerization with Bax does not seem to be required for anti-apoptotic activity (3). Since Bcl-xL can form an ion channel in synthetic lipid membranes, there is a strong possibility that this property plays a role in heterodimerization-independent cell survival (4). The Bcl-X(S) isoform promotes apoptosis.
Immunogen	peptide

Key Feature

Clonality	Polyclonal
Isotype	IgG
Host Species	Rabbit
Tested Applications	WB ,ICC ,IHC ,FC ,IP
Species Reactivity	Human Mouse Rat
Concentration	1 mg/mL.

Target Information

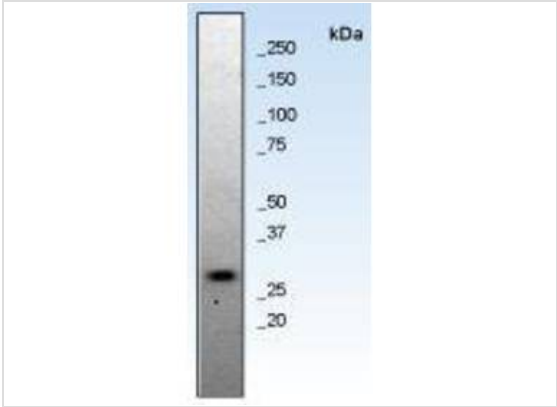
Alternative Names	Apoptosis regulator Bcl X antibody Bcl 2 like 1 antibody Bcl 2 like 1 protein antibody Bcl xL antibody BCL XL/S antibody Bcl xS antibody Bcl2 like1 antibody BCL2-related gene antibody BCL2-related protein, long isoform, included; BCLXL, included antibody BCL2-related protein, short isoform, included; BCLXS, included antibody BCL2L antibody BCL2L1 antibody Bclx antibody DKFZp781P2092 antibody MGC113803 antibody MGC99998 antibody
Molecular Weight(MW)	26 (Bcl-xL) / 19 (Bcl-xS)

Cellular Localization	Cytoplasm, Nucleus membrane, Cytoplasmic vesicle Mitochondrion matrix, Mitochondrion outer/ inner membrane
------------------------------	--

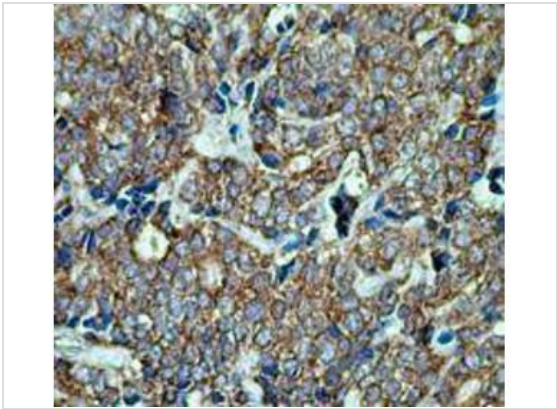
Database Links

SwissProt ID	Q07817
--------------	--------

Application



Application
Fig1: Western blot analysis of K562 cell lysate using anti-Bcl-x.



Application
Fig2□ Immunohistochemical analysis of human paraffin-embedded prostate carcinoma tissue using anti-Bcl-x.

Positive Control	K562, human paraffin-embedded prostate carcinoma tissue.
-------------------------	--

Application Notes	WB:1:500-1,000
	ICC:1:100
	IHC:1:50-100
	IP:1:10
	FC:1:50

Additional Information

Form	Liquid
Storage Instructions	Store at -20 °C. Stable for 12 months from date of receipt
Storage Buffer	1*TBS (pH7.4), 0.5%BSA, 40%Glycerol. Preservative: 0.05% Sodium Azide.
Note	The product is for research use only,not for use in diagnostic or therapeutic procedures.

OmnimAbs.com

order@Omnimabs.com

506 N. GARFIELD AVE #210 ALHAMBRA, CA 91801

This product is for research use only and is not approved for use in humans or in clinical diagnosis. Primary Antibodies are guaranteed for 1 year from date of receipt

