



Catalog: OM157627

Scan to get more validated information



CBP Antibody (C-20)

Catalog: OM157627

☐ 100ul

Product profile

Product name	CBP Antibody (C-20)
Antibody Type	Primary Antibodies
Modification Notes	Cyclic AMP-regulated gene expression frequently involves a DNA element designated the cAMP-regulated enhancer (CRE). Many transcription factors bind to this element, including the protein CREB, which is activated as a result of phosphorylation by protein kinase A. It has been shown that protein kinase A-mediated CREB phosphorylation results in its binding to a nuclear protein designated CBP (for CREB-binding protein). These findings suggest that CBP has many of the properties expected of a CREB co-activator. Another high molecular weight transcriptional adapter protein, designated p300, is characterized by three cysteine- and histidine-rich regions, of which the most carboxy terminal region specifically binds the adenovirus E1A protein. p300 molecules lacking an intact E1A binding site bypass E1A repression, even in the presence of high concentrations of E1A. Sequence analysis of CBP and p300 has revealed substantial homology, arguing that these proteins are members of a conserved family of co-activators.

Key Feature

Clonality	Polyclonal
Isotype	IgG
Host Species	Rabbit
Tested Applications	WB ,IF ,IHC ,FC ,ELISA ,GS ,ChIP
Species Reactivity	Human Mouse Rat
Concentration	1mg/ml
Purification	Affinity purified

Target Information

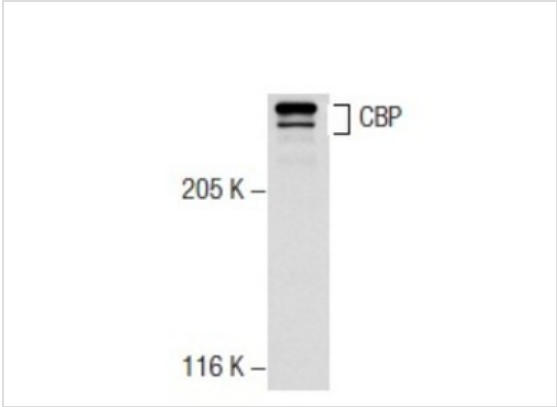
Alternative Names	epitope mapping at the C-terminus of CBP of human origin
Tissue Specificity	epitope mapping at the C-terminus of CBP of human origin

Database Links

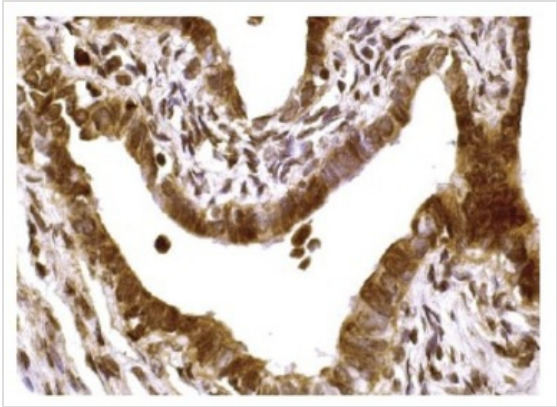
Entrez Gene

1387

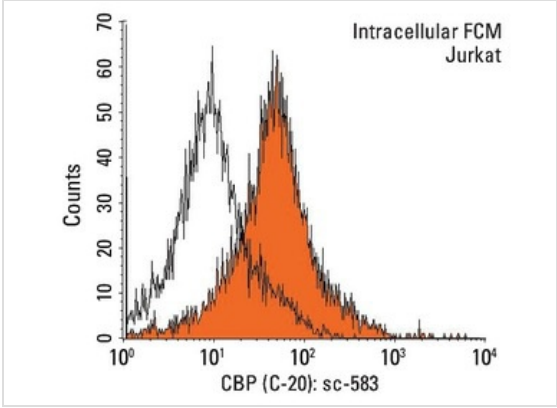
Application



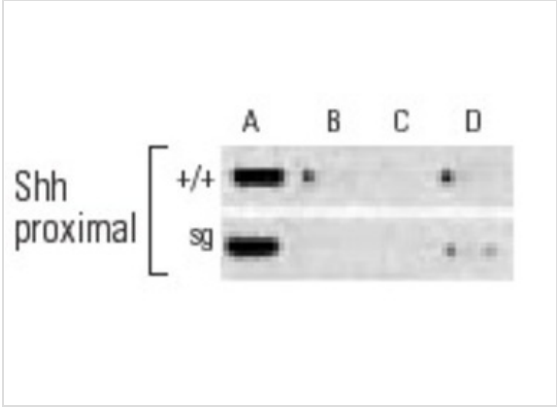
Application
Western blot analysis of CBP expression in Jurkat nuclear extract.



Application
Immunoperoxidase staining of formalin fixed, paraffin-embedded human ovary tissue showing nuclear and cytoplasmic staining of cells in fallopian tubes.

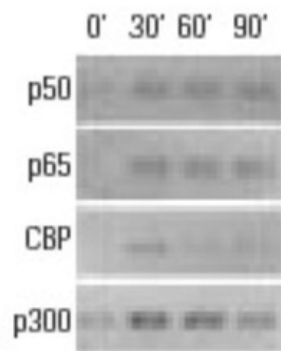


Application
Indirect, intracellular FCM analysis of fixed and permeabilized Jurkat cells stained with CBP (C-20), followed by PE-conjugated goat anti-rabbit IgG: . Black line histogram represents the isotype control, normal rabbit IgG: .

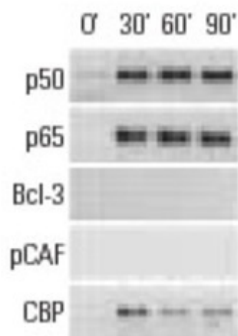


Application
Control Input (A). Antibodies used included RORα (C-16): (B), TIP60 (N-17): (C), CBP (A-22): and CBP (C-20): (D). Data kindly provided by M.G. Rosenfeld and reproduced with permission from Gold et al., Neuron 2003, 40: 1119-1131.

Application
Antibodies tested include NFκB p50 (C-19): , NFκB p50 (E-10): , NFκB p50 (H-119): , NFκB p65 (C-20): , NFκB p65 (A): , NFκB p65 (H-286): , CBP (A-22): , CBP (C-1): ,

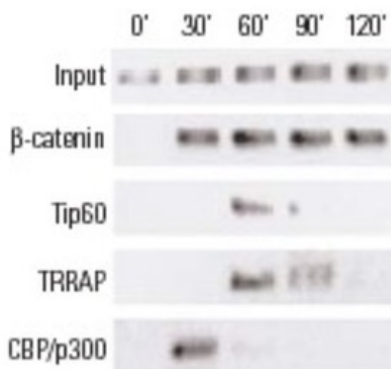


CBP (C-20): , CBP (451): , p300 (C-20): 585, p300 (N-15): 584, p300 (H-272): . Data kindly provided by M.G. Rosenfeld and reproduced with permission from Baek et al., Cell 2002, 110: 55-67.



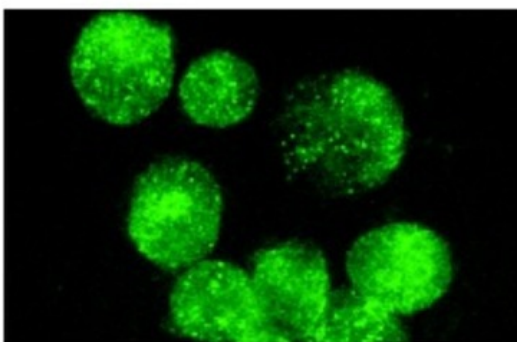
Application

Antibodies tested include NFκB p50 (C-19): , NFκB p50 (E-10): , NFκB p50 (H-119): , NFκB p65 (C-20): , NFκB p65 (A): , NFκB p65 (H-286): , Bcl-3 (C-14): , Bcl-3 (H-146): , PCAF (C-16): , PCAF (H-369): , CBP (A-22): , CBP (C-1): , CBP (C-20): , CBP (451): . Data kindly provided by M.G. Rosenfeld and reproduced with permission from Baek et al., Cell 2002, 110: 55-67.



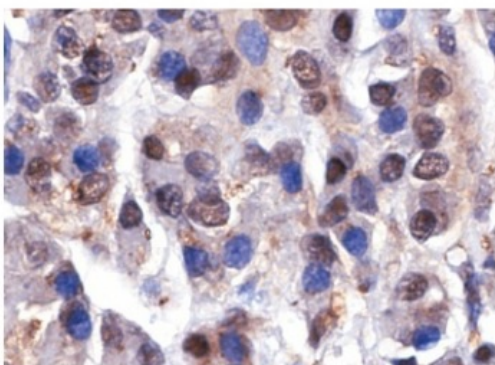
Application

Antibodies tested include β-catenin (H-102): , β-catenin (C-18): , β-catenin (E-5): , Tip60 (N-17): , TRRAP (T-17): , TRRAP (Y-18): , TRRAP (F-20): , TRRAP (H-300): , CBP (A-22): , CBP (C-20): , CBP (451): , CPB (C-1): , p300 (H-272): , p300 (N-15): and p300 (C-20): . Data kindly provided by M.G. Rosenfeld and reproduced with permission from Kioussi et al., Cell 2002, 111: 673-685.



Application

Immunofluorescence staining of methanol-fixed Jurkat cells showing nuclear staining.



Application

Immunoperoxidase staining of formalin-fixed, paraffin-embedded human pancreas tissue showing nuclear staining.

Application Notes	recommended for detection of CBP p265 of mouse, rat and human origin by WB, IF, IHC(P), ELISA and indirect FCM using PE-conjugated goat anti-rabbit IgG: sc-3739; also reactive with additional species, including equine, canine, bovine, porcine and avian:
--------------------------	---

Additional Information

Form	Liquid
Storage Instructions	For short-term storage, store at 4° C. For long-term storage, aliquot and store at -20°C or below. Avoid multiple freeze-thaw cycles.
Storage Buffer	phosphate buffered saline , pH 7.4, 150mM NaCl, 0.02% sodium azide and 50% glycerol.
Note	The product is for research use only,not for use in diagnostic or therapeutic procedures.

OmnimAbs.com

order@Omnimabs.com

506 N. GARFIELD AVE #210 ALHAMBRA, CA 91801

This product is for research use only and is not approved for use in humans or in clinical diagnosis. Primary Antibodies are guaranteed for 1 year from date of receipt
