



Catalog: OM273784

Scan to get more validated information



CCNA2 Antibody

Catalog: OM273784

☐ 100ug

Product profile

| | |
|---------------------|--|
| Product name | CCNA2 Antibody |
| Antibody Type | Primary Antibodies |
| Product description | CCNA2 belongs to the highly conserved cyclin family, whose members are characterized by a dramatic periodicity in protein abundance through the cell cycle. Cyclins function as regulators of CDK kinases. Different cyclins exhibit distinct expression and degradation patterns which contribute to the temporal coordination of each mitotic event. In contrast to cyclin A1, which is present only in germ cells, this cyclin is expressed in all tissues tested. This cyclin binds and activates CDC2 or CDK2 kinases, and thus promotes both cell cycle G1/S and G2/M transitions. ¹) Henglein B., Proc. Natl. Acad. Sci. U.S.A. 91:5490-5494 (1994) |
| Immunogen | This CCNA2 antibody is generated from rabbits immunized with a KLH conjugated synthetic peptide between 358-389 amino acids from the C-terminal region of human CCNA2. |

Key Feature

| | |
|---------------------|------------|
| Clonality | Polyclonal |
| Isotype | Ig |
| Host Species | Rabbit |
| Tested Applications | IHC-P, WB |
| Species Reactivity | Human |
| Concentration | 1 mg/ml |

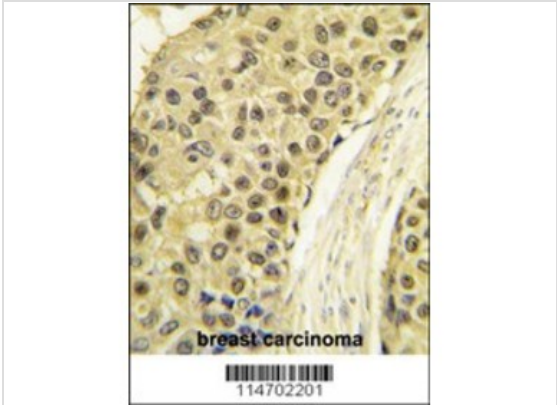
Target Information

| | |
|----------------------|--|
| Gene Symbol | CCNA2 |
| Alternative Names | Cyclin-A2, Cyclin-A, CCNA2, CCN1, CCNA |
| Molecular Weight(MW) | 49 kDa |

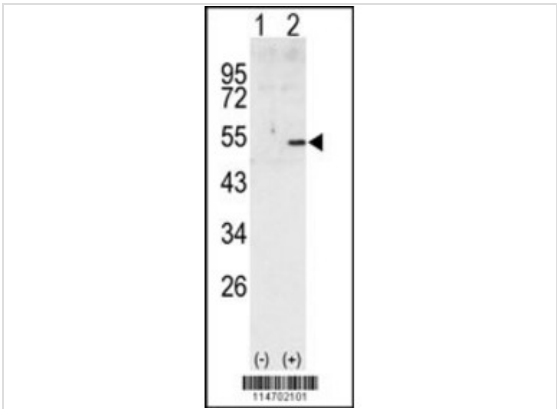
Database Links

| | |
|-------------------|--------|
| Entrez Gene | 890 |
| Protein Accession | P20248 |

Application



Application
 Formalin-fixed and paraffin-embedded human breast carcinoma tissue reacted with CCNA2 antibody , which was peroxidase-conjugated to the secondary antibody, followed by DAB staining.



Application
 Western blot analysis of CCNA2 using rabbit polyclonal CCNA2 Antibody using 293 cell lysates (2 ug/lane) either nontransfected (Lane 1) or transiently transfected with the CCNA2 gene (Lane 2).

Application Notes

For WB starting dilution is: 1:1000 For IHC-P starting dilution is: 1:10~50:

Additional Information

| | |
|----------------------|--|
| Form | Liquid |
| Storage Instructions | Store at 4°C for three months and -20°C, stable for up to one year. As with all antibodies care should be taken to avoid repeated freeze thaw cycles. Antibodies should not be exposed to prolonged high temperatures. |
| Storage Buffer | Supplied in PBS with 0.09% (W/V) sodium azide. |
| Note | The product is for research use only,not for use in diagnostic or therapeutic procedures. |

OmnimAbs.com

order@Omnimabs.com

506 N. GARFIELD AVE #210 ALHAMBRA, CA 91801

This product is for research use only and is not approved for use in humans or in clinical diagnosis. Primary Antibodies are guaranteed for 1 year from date of receipt