



Catalog: OM154805

Scan to get more validated information



# CD10 Antibody (H-321)

Catalog: OM154805

☐ 100ul

## Product profile

Product name	CD10 Antibody (H-321)
Antibody Type	Primary Antibodies
Modification Notes	CD10, also called the common acute lymphoblastic leukemia antigen (CALLA) and neutral endopeptidase (NEP), is a type II integral membrane glycoprotein. CD10 acts as a zinc metalloprotease that cleaves a variety of biologically active peptides including Angiotensins I and II. It is expressed on early B and T lymphoid precursors, B blasts, some granulocytes, bone marrow stromal cells and certain epithelial cells including some tumor cell lines. CD10 is used as a marker of common acute lymphocytic leukemias and some lymphomas.

## Key Feature

Clonality	Polyclonal
Isotype	IgG
Host Species	Rabbit
Tested Applications	WB ,IP ,IF ,FC ,ELISA
Species Reactivity	Human Mouse Rat
Concentration	1mg/ml
Purification	Affinity purified

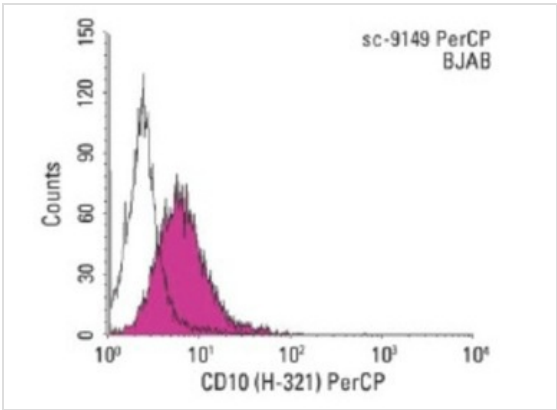
## Target Information

Alternative Names	epitope corresponding to amino acids 230-550 mapping within an internal region of CD10 of human origin
Tissue Specificity	epitope corresponding to amino acids 230-550 mapping within an internal region of CD10 of human origin

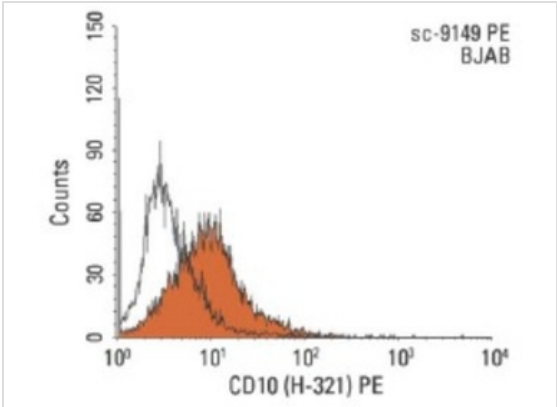
## Database Links

Entrez Gene	4311
-------------	------

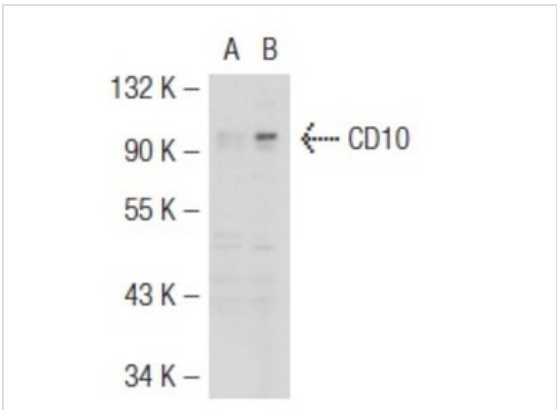
# Application



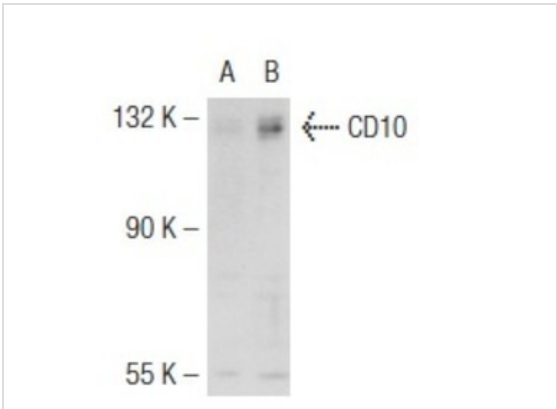
**Application**  
Indirect FCM analysis of BJAB cells stained with CD10 (H-321), followed by PerCP-conjugated donkey anti-rabbit IgG: . Black line histogram represents the isotype control, normal rabbit IgG: .



**Application**  
Indirect FCM analysis of BJAB cells stained with CD10 (H-321), followed by PE-conjugated donkey anti-rabbit IgG: . Black line histogram represents the isotype control, normal rabbit IgG: .

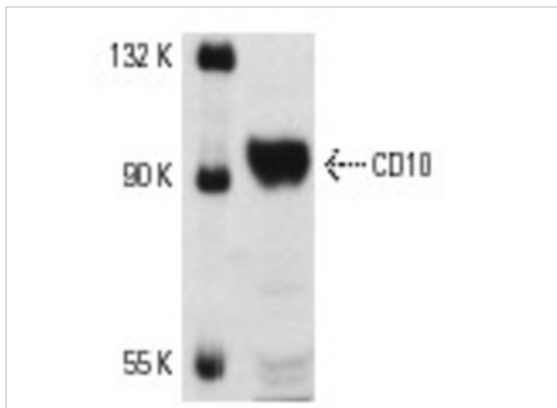


**Application**  
Western blot analysis of CD10 expression in non-transfected: (A) and mouse CD10 transfected: (B) 293T whole cell lysates.



**Application**  
Western blot analysis of CD10 expression in non-transfected: (A) and human CD10 transfected: (B) 293T whole cell lysates.

**Application**  
Immunofluorescence staining of methanol-fixed LNCaP cells showing membrane staining.



#### Application

Western blot analysis of CD10 expression in LNCaP whole cell lysate.

#### Application Notes

recommended for detection of CD10 of mouse, rat and human origin by WB, IP, IF, FCM and ELISA; also reactive with additional species, including equine, canine, bovine and porcine:

## Additional Information

<b>Form</b>	Liquid
<b>Storage Instructions</b>	For short-term storage, store at 4° C. For long-term storage, aliquot and store at -20°C or below. Avoid multiple freeze-thaw cycles.
<b>Storage Buffer</b>	phosphate buffered saline , pH 7.4, 150mM NaCl, 0.02% sodium azide and 50% glycerol.
<b>Note</b>	The product is for research use only,not for use in diagnostic or therapeutic procedures.

# OmnimAbs.com

order@Omnimabs.com

506 N. GARFIELD AVE #210 ALHAMBRA, CA 91801

This product is for research use only and is not approved for use in humans or in clinical diagnosis. Primary Antibodies are guaranteed for 1 year from date of receipt