



Catalog: OM154857

Scan to get more validated information



CD10 Antibody (H-321) FITC

Catalog: OM154857

☐ 100ul

Product profile

Product name	CD10 Antibody (H-321) FITC
Antibody Type	Primary Antibodies
Modification Notes	CD10, also called the common acute lymphoblastic leukemia antigen (CALLA) and neutral endopeptidase (NEP), is a type II integral membrane glycoprotein. CD10 acts as a zinc metalloprotease that cleaves a variety of biologically active peptides including Angiotensins I and II. It is expressed on early B and T lymphoid precursors, B blasts, some granulocytes, bone marrow stromal cells and certain epithelial cells including some tumor cell lines. CD10 is used as a marker of common acute lymphocytic leukemias and some lymphomas.

Key Feature

Clonality	Polyclonal
Isotype	IgG
Host Species	Rabbit
Tested Applications	WB ,IP ,IF ,FC ,ELISA
Species Reactivity	Human Mouse Rat
Concentration	1mg/ml
Purification	Affinity purified

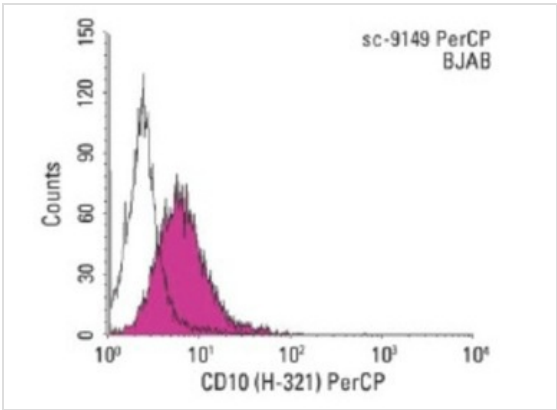
Target Information

Alternative Names	epitope corresponding to amino acids 230-550 mapping within an internal region of CD10 of human origin
Tissue Specificity	epitope corresponding to amino acids 230-550 mapping within an internal region of CD10 of human origin

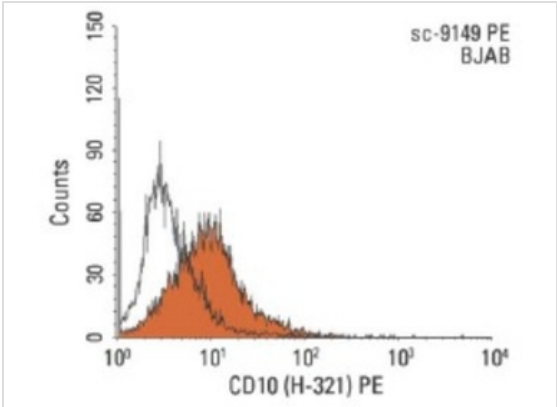
Database Links

Entrez Gene	4311
-------------	------

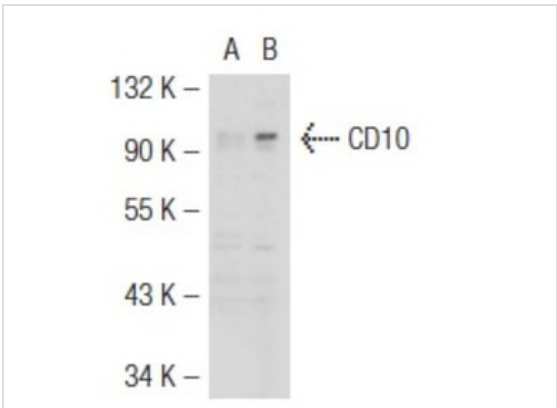
Application



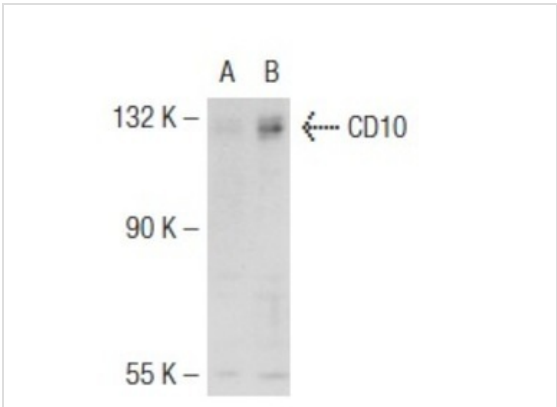
Application
Indirect FCM analysis of BJAB cells stained with CD10 (H-321), followed by PerCP-conjugated donkey anti-rabbit IgG: . Black line histogram represents the isotype control, normal rabbit IgG: .



Application
Indirect FCM analysis of BJAB cells stained with CD10 (H-321), followed by PE-conjugated donkey anti-rabbit IgG: . Black line histogram represents the isotype control, normal rabbit IgG: .

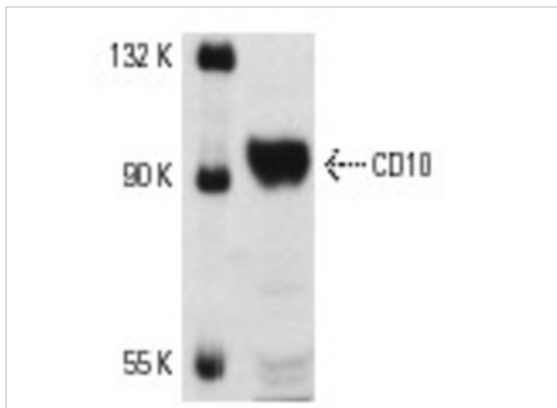


Application
Western blot analysis of CD10 expression in non-transfected: (A) and mouse CD10 transfected: (B) 293T whole cell lysates.



Application
Western blot analysis of CD10 expression in non-transfected: (A) and human CD10 transfected: (B) 293T whole cell lysates.

Application
Immunofluorescence staining of methanol-fixed LNCaP cells showing membrane staining.



Application

Western blot analysis of CD10 expression in LNCaP whole cell lysate.

Application Notes

recommended for detection of CD10 of mouse, rat and human origin by WB, IP, IF, FCM and ELISA; also reactive with additional species, including equine, canine, bovine and porcine:

Additional Information

Form	Liquid
Storage Instructions	For short-term storage, store at 4° C. For long-term storage, aliquot and store at -20°C or below. Avoid multiple freeze-thaw cycles.
Storage Buffer	phosphate buffered saline , pH 7.4, 150mM NaCl, 0.02% sodium azide and 50% glycerol.
Note	The product is for research use only,not for use in diagnostic or therapeutic procedures.

OmnimAbs.com

order@Omnimabs.com

506 N. GARFIELD AVE #210 ALHAMBRA, CA 91801

This product is for research use only and is not approved for use in humans or in clinical diagnosis. Primary Antibodies are guaranteed for 1 year from date of receipt