



Catalog: OM172532

Scan to get more validated information



CKR-7 Antibody (ELC-Fc)

Catalog: OM172532

☐ 100ul

Product profile

Product name	CKR-7 Antibody (ELC-Fc)
Antibody Type	Primary Antibodies
Modification Notes	C-C or J chemokine family members are characterized by a pair of adjacent cysteine residues and serve as potent chemoattractants and activators of monocytes and T cells. C-C chemokine receptor family members include CKR-1, CKR-2A, CKR-2B, CKR-3, CKR-4, CKR-5, CKR-6, CKR-7, CKR-8, CKR-9, CKR-10 and the Duffy blood group antigen. Each of these receptors are G protein-coupled, seven pass transmembrane domain proteins whose major physiological role is to function in the chemotaxis of T cells and phagocytic cells to areas of inflammation. However, this receptor family has also been shown to facilitate viral infection. CKR-7 (C-C chemokine receptor type 7), also known as CCR7, CMKBR7, EBI1 or EVI1, is a 378 amino acid multi-pass membrane protein that belongs to the CC-chemokine receptor family. Expressed in activated B- and T-lymphocytes, as well as in various lymphoid tissues, CKR-7 functions as a receptor for MIP-3β and is thought to be involved in mediating normal lymphocyte function.

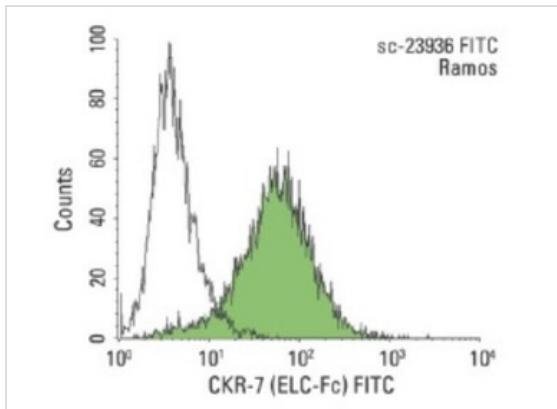
Key Feature

Clonality	Polyclonal
Host Species	Rabbit
Tested Applications	IF ,FC
Species Reactivity	Human Mouse Rat
Concentration	1mg/ml
Purification	Affinity purified

Target Information

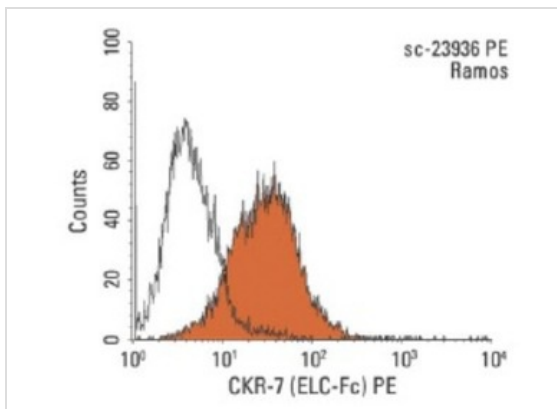
Alternative Names	developed by fusing recombinant ELC (CKR-7 ligand) to human IgG1 Fc
Tissue Specificity	developed by fusing recombinant ELC (CKR-7 ligand) to human IgG1 Fc

Application



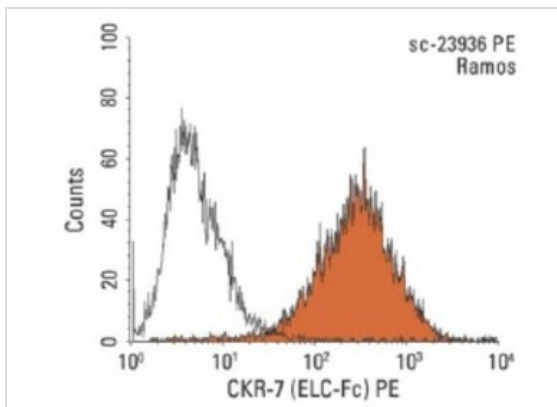
Application

Indirect FCM analysis of Ramos cells stained with CKR-7 (ELC-Fc), followed by FITC-conjugated rabbit anti-human IgG: . Black line histogram represents the isotype control, normal human IgG.



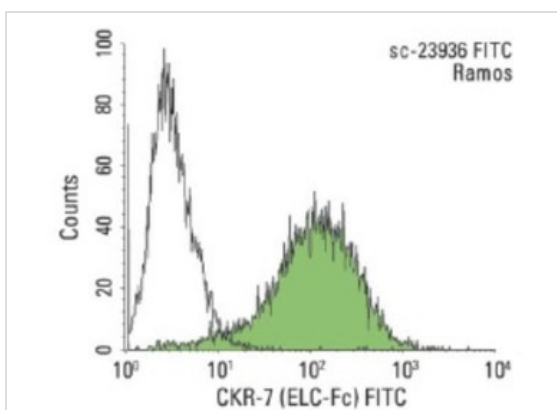
Application

Indirect FCM analysis of Ramos cells stained with CKR-7 (ELC-Fc), followed by PE-conjugated rabbit anti-human IgG: . Black line histogram represents the isotype control, normal human IgG.



Application

Indirect FCM analysis of Ramos cells stained with CKR-7 (ELC-Fc), followed by PE-conjugated goat anti-human IgG: . Black line histogram represents the isotype control, normal human IgG.

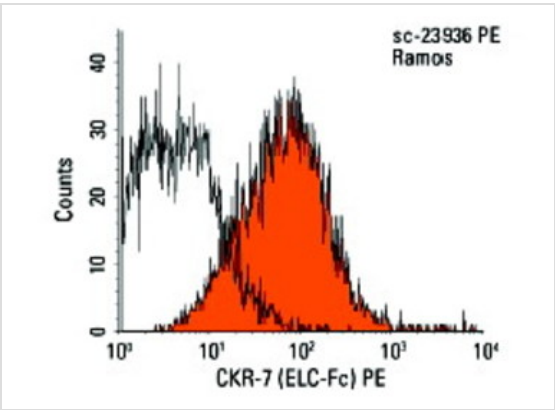


Application

Indirect FCM analysis of Ramos cells stained with CKR-7 (ELC-Fc), followed by FITC-conjugated goat anti-human IgG: . Black line histogram represents the isotype control, normal human IgG.

Application

FCM analysis of Ramos cells. Black line histogram represents the isotype control, normal human IgG1.



Application Notes recommended for detection of CKR-7 of mouse and human origin by IF and FCM; appropriate control for FCM is normal human IgG1:

Additional Information

Form	Liquid
Storage Instructions	For short-term storage, store at 4° C. For long-term storage, aliquot and store at -20°C or below. Avoid multiple freeze-thaw cycles.
Storage Buffer	phosphate buffered saline , pH 7.4, 150mM NaCl, 0.02% sodium azide and 50% glycerol.
Note	The product is for research use only,not for use in diagnostic or therapeutic procedures.

OmnimAbs.com

order@Omnimabs.com
506 N. GARFIELD AVE #210 ALHAMBRA, CA 91801
This product is for research use only and is not approved for use in humans or in clinical diagnosis. Primary Antibodies are guaranteed for 1 year from date of receipt