



Catalog: OM172570

Scan to get more validated information



# CKR-7 Antibody (ELC-Fc) FITC

Catalog: OM172570

☐ 100ul

## Product profile

Product name	CKR-7 Antibody (ELC-Fc) FITC
Antibody Type	Primary Antibodies
Modification Notes	C-C or J chemokine family members are characterized by a pair of adjacent cysteine residues and serve as potent chemoattractants and activators of monocytes and T cells. C-C chemokine receptor family members include CKR-1, CKR-2A, CKR-2B, CKR-3, CKR-4, CKR-5, CKR-6, CKR-7, CKR-8, CKR-9, CKR-10 and the Duffy blood group antigen. Each of these receptors are G protein-coupled, seven pass transmembrane domain proteins whose major physiological role is to function in the chemotaxis of T cells and phagocytic cells to areas of inflammation. However, this receptor family has also been shown to facilitate viral infection. CKR-7 (C-C chemokine receptor type 7), also known as CCR7, CMKBR7, EBI1 or EVI1, is a 378 amino acid multi-pass membrane protein that belongs to the CC-chemokine receptor family. Expressed in activated B- and T-lymphocytes, as well as in various lymphoid tissues, CKR-7 functions as a receptor for MIP-3β and is thought to be involved in mediating normal lymphocyte function.

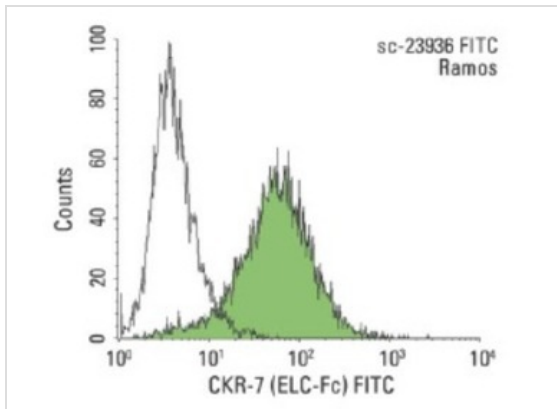
## Key Feature

Clonality	Polyclonal
Host Species	Rabbit
Tested Applications	IF ,FC
Species Reactivity	Human Mouse Rat
Concentration	1mg/ml
Purification	Affinity purified

## Target Information

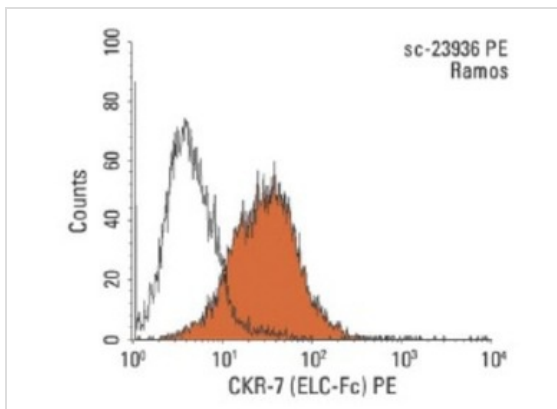
Alternative Names	developed by fusing recombinant ELC (CKR-7 ligand) to human IgG1 Fc
Tissue Specificity	developed by fusing recombinant ELC (CKR-7 ligand) to human IgG1 Fc

## Application



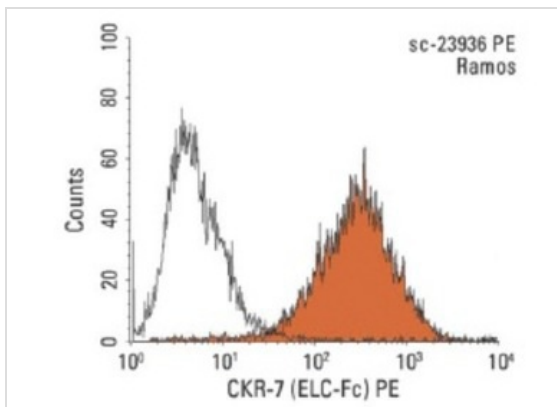
#### Application

Indirect FCM analysis of Ramos cells stained with CKR-7 (ELC-Fc), followed by FITC-conjugated rabbit anti-human IgG: . Black line histogram represents the isotype control, normal human IgG.



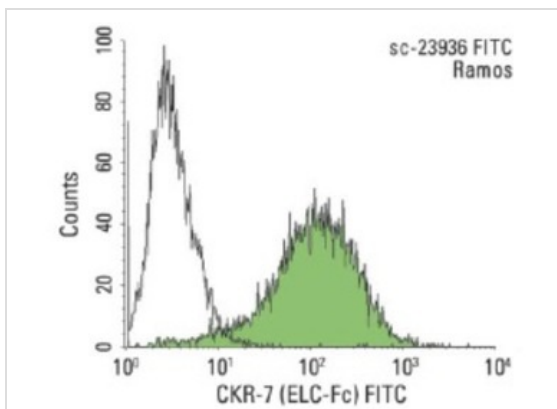
#### Application

Indirect FCM analysis of Ramos cells stained with CKR-7 (ELC-Fc), followed by PE-conjugated rabbit anti-human IgG: . Black line histogram represents the isotype control, normal human IgG.



#### Application

Indirect FCM analysis of Ramos cells stained with CKR-7 (ELC-Fc), followed by PE-conjugated goat anti-human IgG: . Black line histogram represents the isotype control, normal human IgG.

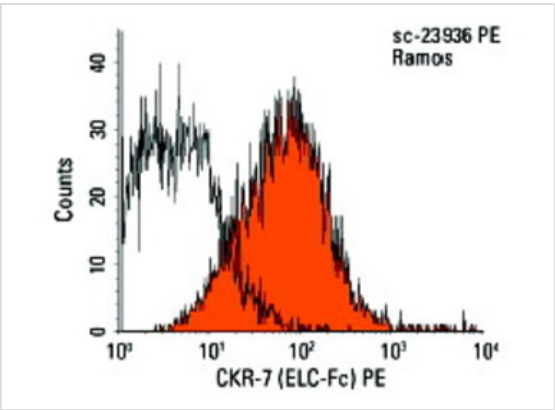


#### Application

Indirect FCM analysis of Ramos cells stained with CKR-7 (ELC-Fc), followed by FITC-conjugated goat anti-human IgG: . Black line histogram represents the isotype control, normal human IgG.

#### Application

FCM analysis of Ramos cells. Black line histogram represents the isotype control, normal human IgG1.



**Application Notes** recommended for detection of CKR-7 of mouse and human origin by IF and FCM; appropriate control for FCM is normal human IgG1:

Additional Information

Form	Liquid
Storage Instructions	For short-term storage, store at 4° C. For long-term storage, aliquot and store at -20°C or below. Avoid multiple freeze-thaw cycles.
Storage Buffer	phosphate buffered saline , pH 7.4, 150mM NaCl, 0.02% sodium azide and 50% glycerol.
Note	The product is for research use only,not for use in diagnostic or therapeutic procedures.

OmnimAbs.com

order@Omnimabs.com  
506 N. GARFIELD AVE #210 ALHAMBRA, CA 91801  
This product is for research use only and is not approved for use in humans or in clinical diagnosis. Primary Antibodies are guaranteed for 1 year from date of receipt