



Catalog: OM155192

Scan to get more validated information



# CREB-1 Antibody (240) PE

Catalog: OM155192

☐ 100ul

## Product profile

Product name	CREB-1 Antibody (240) PE
Antibody Type	Primary Antibodies
Modification Notes	Eukaryotic gene transcription is regulated by sequence-specific transcription factors that bind modular cis-acting promoter and enhancer elements. The ATF/CREB transcription factor family binds the palindromic cAMP response element (CRE) octanucleotide TGACGTCA. The ATF/CREB family includes CREB-1, CREB-2 (also designated ATF-4), ATF-1, ATF-2 and ATF-3. This family of proteins contains highly divergent N-terminal domains, but shares a C-terminal leucine zipper for dimerization and DNA binding. Although CREB can bind to DNA in an unphosphorylated state, it cannot activate transcription. Phosphorylation of CREB on Ser 133 by protein kinase A facilitates its interaction with the CREB-binding protein (CBP) and activates the basal transcription complex. CREB functions in neoglucogenesis through interactions with the nuclear coactivator PGC-1. CREB may play a role in the pathogenesis of type II diabetes and dilated cardiomyopathy.

## Key Feature

Clonality	Polyclonal
Isotype	IgG
Host Species	Rabbit
Tested Applications	WB ,IP ,IF ,FC ,ELISA
Species Reactivity	Human Mouse Rat
Concentration	1mg/ml
Purification	Affinity purified

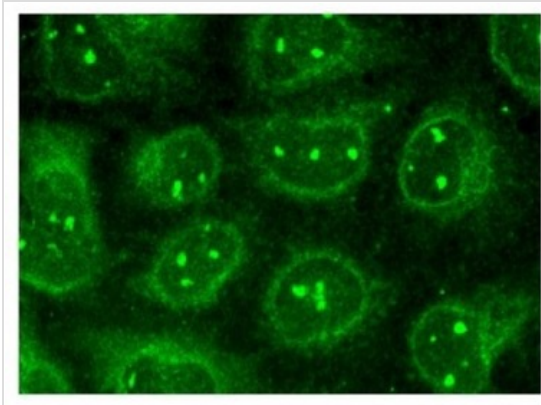
## Target Information

Alternative Names	epitope mapping within the $\alpha$ region of CREB-1 of human origin
Tissue Specificity	epitope mapping within the $\alpha$ region of CREB-1 of human origin

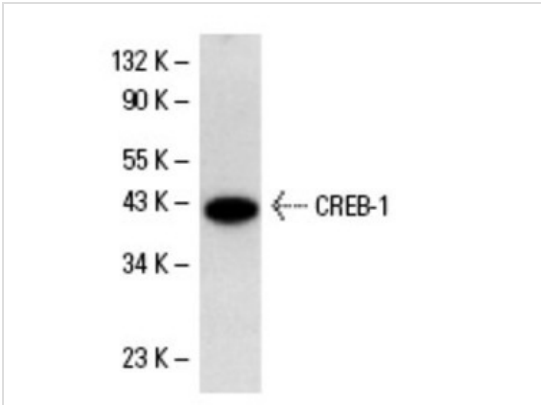
Database Links

Entrez Gene 1385

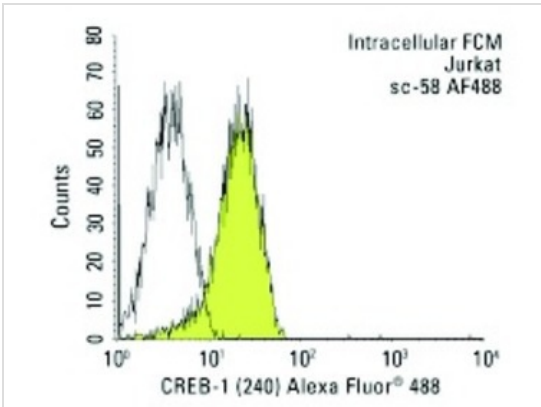
Application



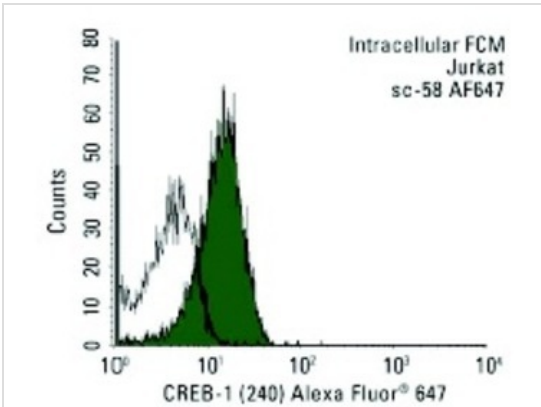
**Application**  
Immunofluorescence staining of methanol-fixed HeLa cells showing nucleolar and cytoplasmic localization.



**Application**  
Western blot analysis of CREB-1 expression in A-431 nuclear extract.

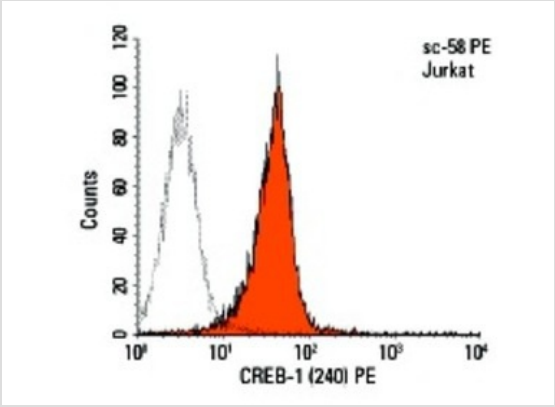
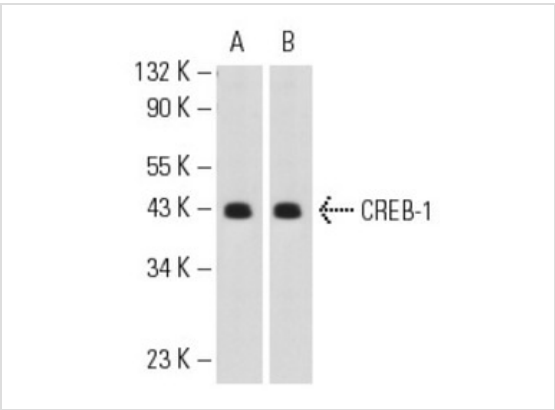


**Application**  
Intracellular FCM analysis of fixed and permeabilized Jurkat cells. Black line histogram represents the isotype control, normal rabbit IgG: .



**Application**  
Intracellular FCM analysis of fixed and permeabilized Jurkat cells. Black line histogram represents the isotype control, normal rabbit IgG: .

**Application**  
Antibodies tested include CREB-1 (24H4B): (A) and CREB-1 (240): (B).



**Application**  
Intracellular FCM analysis of fixed and permeabilized Jurkat cells. Black line histogram represents the isotype control, normal rabbit IgG: .

**Application Notes** recommended for detection of CREB-1A of mouse, rat and human origin by WB, IP, IF, FCM and ELISA; non cross-reactive with CREB-1B:

Additional Information

Form	Liquid
Storage Instructions	For short-term storage, store at 4° C. For long-term storage, aliquot and store at -20°C or below. Avoid multiple freeze-thaw cycles.
Storage Buffer	phosphate buffered saline , pH 7.4, 150mM NaCl, 0.02% sodium azide and 50% glycerol.
Note	The product is for research use only,not for use in diagnostic or therapeutic procedures.

OmnimAbs.com

order@Omnimabs.com  
506 N. GARFIELD AVE #210 ALHAMBRA, CA 91801  
This product is for research use only and is not approved for use in humans or in clinical diagnosis. Primary Antibodies are guaranteed for 1 year from date of receipt