



Catalog: OM276487

Scan to get more validated information



# CXCR4-Lo Antibody

Catalog: OM276487

☐ 100ug

## Product profile

Product name	CXCR4-Lo Antibody
Antibody Type	Primary Antibodies
Product description	<p>CXCR4-Lo Antibody: Human immunodeficiency virus (HIV) and related viruses require coreceptors, in addition to CD4, to infect target cells. Some G protein-coupled receptors including CCR5, CXCR4, CCR3, CCR2b and CCR8 in the chemokine receptor family, and four new human molecules GPR15, STRL33, GPR1 and V28 were recently identified as HIV coreceptors. Among them, CXCR4 is a principal coreceptor for T-cell tropic strains of HIV-1 fusion and entry of human white blood cells. CXCR4 is also required for the infection by dual-tropic strains of HIV-1 and mediates CD-4 independent infection by HIV-2. The alpha-chemokine SDF-1 is the ligand for CXCR4 and prevents infection by T-tropic HIV-1. CXCR4 associates with the surface CD4-gp120 complex before HIV enters target cells. CXCR4 messenger RNA levels correlated with HIV-1 permissiveness in diverse human cell types. Antibodies to CXCR4 block HIV-1 and HIV-2 fusion and infection of human target cells. The amino-terminal domain and the second extracellular loop of CXCR4 serve as HIV binding sites.<sup>1)</sup> Dimitrov DS. Cell 1997; 91:721-30.</p>
Immunogen	<p>CXCR4-Lo antibody was raised against a peptide corresponding to nine amino acids near the amino terminus of human CXCR4 isoform a. The immunogen is located within the first 50 amino acids of CXCR4-Lo.</p>

## Key Feature

Clonality	Polyclonal
Isotype	IgG
Host Species	Rabbit
Tested Applications	ELISA ,ICC ,IF ,WB
Species Reactivity	Human
Concentration	1 mg/ml

## Target Information

Gene Symbol	CXCR4
Alternative Names	CXCR4-Lo Antibody: FB22, HM89, LAP3, LCR1, NPYR, WHIM, CD184, LESTR, NPY3R, NPYRL, HSY3RR,

NPYY3R, D2S201E, C-X-C chemokine receptor type 4, FB22, CXC-R4

**Sequence Similarities** 2) Cat. No. 17-001 - HeLa Cell Slide

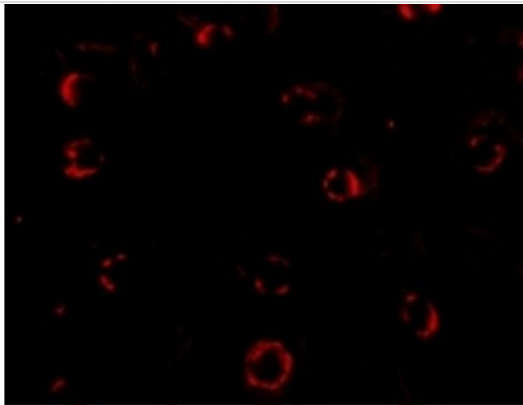
**Tissue Specificity** This antibody is specific for the longer isoform of CXCR4.

## Database Links

**Entrez Gene** 7852

**Protein Accession** NP\_001008540

## Application



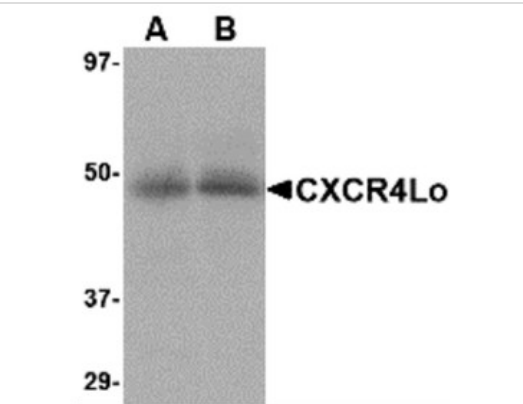
### Application

Immunofluorescence of CXCR4-Lo in HeLa cells with CXCR4-Lo antibody at 4 µg/mL.



### Application

Immunohistochemistry of CXCR4Lo in HeLa cells with CXCR4Lo antibody at 2 µg/mL.



### Application

Western blot analysis of CXCR4 in (A) human spleen and (B) human thymus tissue lysate with CXCR4-Lo antibody at 10 µg/mL.

**Positive Control** 1) Cat. No. 1306 - Human Spleen Tissue Lysate

**Application Notes** CXCR4-Lo antibody can be used for Western blot at 10 µg/mL. Antibody can also be used for immunocytochemistry starting at 2 µg/mL. For immunofluorescence start at 4 µg/mL.:

Additional Information

Form	Liquid
Storage Instructions	CXCR4-Lo antibody can be stored at 4°C for three months and -20°C, stable for up to one year. As with all antibodies care should be taken to avoid repeated freeze thaw cycles. Antibodies should not be exposed to prolonged high temperatures.
Storage Buffer	CXCR4-Lo Antibody is supplied in PBS containing 0.02% sodium azide.
Note	The product is for research use only,not for use in diagnostic or therapeutic procedures.

OmnimAbs.com

order@Omnimabs.com  
506 N. GARFIELD AVE #210 ALHAMBRA, CA 91801  
This product is for research use only and is not approved for use in humans or in clinical diagnosis. Primary Antibodies are guaranteed for 1 year from date of receipt