



Catalog: OM275386

Scan to get more validated information



Chk2 (phospho Ser516) Antibody

Catalog: OM275386

☐ 100ug

Product profile

Product name	Chk2 (phospho Ser516) Antibody
Antibody Type	Primary Antibodies
Product description	<p>In response to DNA damage and replication blocks, cell cycle progression is halted through the control of critical cell cycle regulators. The protein encoded by Chk2 gene is a cell cycle checkpoint regulator and putative tumor suppressor. It contains a forkhead-associated protein interaction domain essential for activation in response to DNA damage and is rapidly phosphorylated in response to replication blocks and DNA damage. When activated, the encoded protein is known to inhibit CDC25C phosphatase, preventing entry into mitosis, and has been shown to stabilize the tumor suppressor protein p53, leading to cell cycle arrest in G1. In addition, this protein interacts with and phosphorylates BRCA1, allowing BRCA1 to restore survival after DNA damage. Mutations in this gene have been linked with Li-Fraumeni syndrome, a highly penetrant familial cancer phenotype usually associated with inherited mutations in TP53. Also, mutations in this gene are thought to confer a predisposition to sarcomas, breast cancer, and brain tumors. This nuclear protein is a member of the CDS1 subfamily of serine/threonine protein kinases. Three transcript variants encoding different isoforms have been found for this gene.¹⁾ Wu X, Chen J et al. (2003) J Biol Chem; 278 (38): 36163-8Schwarz JK, et al. (2003) Mol Cancer Res; 1 (8): 598-609Lou Z, et al. (2003) Nature; 421 (6926): 957-61</p>
Immunogen	Chk2 (Phospho-Ser516) antibody was raised against a peptide sequence around phosphorylation site of serine 516 (Q-P-S (p) -T-S) derived from Human Chk2.

Key Feature

Clonality	Polyclonal
Host Species	Rabbit
Tested Applications	WB
Species Reactivity	Human Mouse Rat
Concentration	1 mg/ml
Purification	Affinity purified

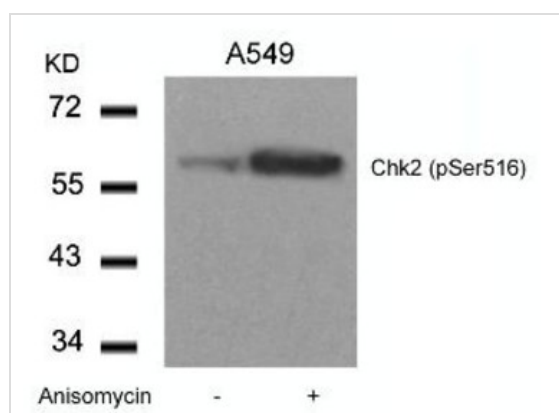
Target Information

Gene Symbol	CHEK2
Alternative Names	CDS1, CHK2, LFS2, RAD53, hCds1, HuCds1, PP1425, IMD2, CHEK2, Cds1
Molecular Weight(MW)	62 kDa
Tissue Specificity	This antibody detects endogenous level of Chk2 only when phosphorylated at serine 516.

Database Links

Entrez Gene	11200
Protein Accession	NP_001005735.1

Application



Application

Western blot analysis of lysed extracts from A549 cells untreated or treated with Anisomycin using Chk2 (Phospho-Ser516).

Application Notes	Western Blot: 1:500~1:1000:
--------------------------	------------------------------------

Additional Information

Form	Liquid
Storage Instructions	Store antibody at -20°C for up to one year.
Storage Buffer	Antibody supplied in phosphate buffered saline (without Mg2+ and Ca2+), pH 7.4, 150mM NaCl, 0.02% sodium azide and 50% glycerol.
Note	The product is for research use only, not for use in diagnostic or therapeutic procedures.

OmnimAbs.com

order@Omnimabs.com

506 N. GARFIELD AVE #210 ALHAMBRA, CA 91801

This product is for research use only and is not approved for use in humans or in clinical diagnosis. Primary Antibodies are guaranteed for 1 year from date of receipt