



Catalog: OM276522

Scan to get more validated information



Cyclin A Antibody

Catalog: OM276522

☐ 100ug

Product profile

Product name	Cyclin A Antibody
Antibody Type	Primary Antibodies
Product description	CCNA2 belongs to the highly conserved cyclin family, whose members are characterized by a dramatic periodicity in protein abundance through the cell cycle. Cyclins function as regulators of CDK kinases. Different cyclins exhibit distinct expression and degradation patterns which contribute to the temporal coordination of each mitotic event. In contrast to cyclin A1, which is present only in germ cells, this cyclin is expressed in all tissues tested. This cyclin binds and activates CDC2 or CDK2 kinases, and thus promotes both cell cycle G1/S and G2/M transitions. ¹) Henglein B., Proc. Natl. Acad. Sci. U.S.A. 91:5490-5494 (1994)
Immunogen	This Cyclin A (CCNA2) antibody is generated from rabbits immunized with a KLH conjugated synthetic peptide between 51-84 amino acids from the N-terminal region of human Cyclin A (CCNA2).

Key Feature

Clonality	Polyclonal
Isotype	Ig
Host Species	Rabbit
Tested Applications	FACS ,IHC-P ,WB
Species Reactivity	Human
Concentration	1 mg/ml

Target Information

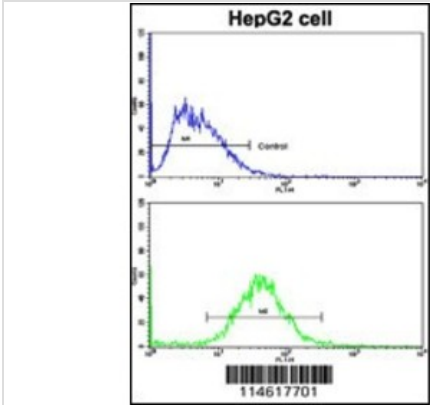
Gene Symbol	CCNA2
Alternative Names	Cyclin-A2, Cyclin-A, CCNA2, CCN1, CCNA
Molecular Weight(MW)	49 kDa

Database Links

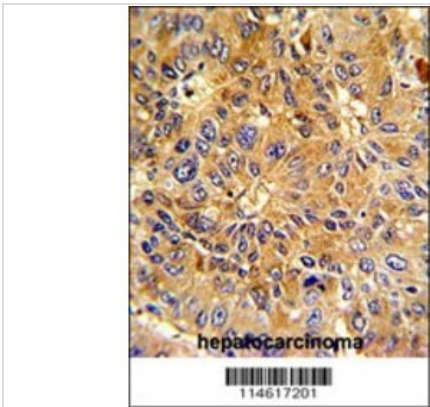
NCBI	CCNA2
------	-------

Entrez Gene	890
Protein Accession	P20248

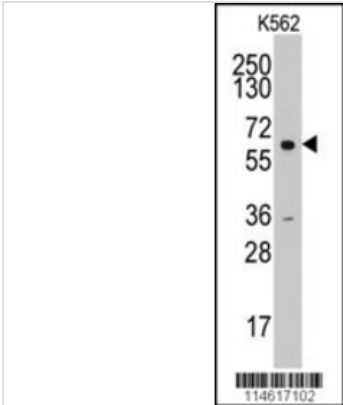
Application



Application
Flow cytometric analysis of HepG2 cells using Cyclin A (CCNA2) Antibody (N-term) (bottom histogram) compared to a negative control cell (top histogram). FITC-conjugated goat-anti-rabbit secondary antibodies were used for the analysis.



Application
Formalin-fixed and paraffin-embedded human hepatocarcinoma with Cyclin A (CCNA2) Antibody (N-term), which was peroxidase-conjugated to the secondary antibody, followed by DAB staining.



Application
Western blot analysis of anti-CCNA2Pab in K562 cell line lysates (35ug/lane).

Application Notes For WB starting dilution is: 1:1000 For IHC-P starting dilution is: 1:50~100 For FACS starting dilution is: 1:10~50:

Additional Information

Form	Liquid
Storage Instructions	Store at 4 °C for three months and -20 °C, stable for up to one year. As with all antibodies care should be taken to avoid repeated freeze thaw cycles. Antibodies should not be exposed to prolonged high temperatures.
Storage Buffer	Supplied in PBS with 0.09% (W/V) sodium azide.
Note	The product is for research use only,not for use in diagnostic or therapeutic procedures.

OmnimAbs.com

order@Omnimabs.com

506 N. GARFIELD AVE #210 ALHAMBRA, CA 91801

This product is for research use only and is not approved for use in humans or in clinical diagnosis. Primary Antibodies are guaranteed for 1 year from date of receipt
