



Catalog: OM166034

Scan to get more validated information



E2A Antibody (V-18)

Catalog: OM166034

☐ 100ul

Product profile

Product name	E2A Antibody (V-18)
Antibody Type	Primary Antibodies
Modification Notes	Differentiation of myogenic cells is regulated by multiple positively and negatively acting factors. One well characterized family of helix-loop-helix (HLH) proteins known to play an important role in the regulation of muscle cell development includes MyoD, myogenin, Myf-5 and Myf-6 (also designated MRF-4 or herculin). MyoD transcription factors form heterodimers with products of a more widely expressed family of bHLH genes, the E family, which consists of at least three distinct genes: E2A, IF2 and HEB. MyoD-E heterodimers bind avidly to consensus (CANNTG) E box target sites that are functionally important elements in the upstream regulatory sequences of many muscle-specific terminal differentiation genes. Both homo- and hetero-oligomers of these proteins are able to distinguish very closely related E box proteins and are believed to play important roles in lineage specific gene expression.

Key Feature

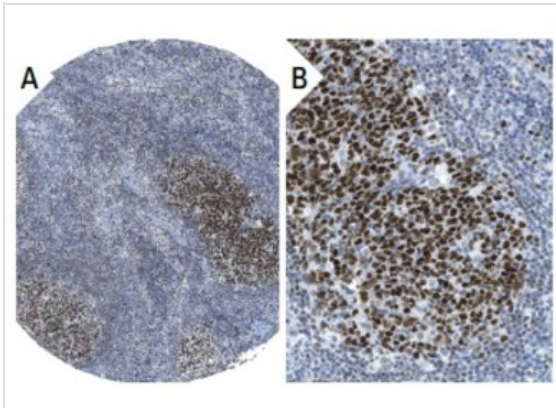
Clonality	Polyclonal
Isotype	IgG
Host Species	Rabbit
Tested Applications	WB ,IP ,IF ,IHC ,FC ,ELISA ,GS ,ChIP
Species Reactivity	Human Mouse Rat
Concentration	1mg/ml
Purification	Affinity purified

Target Information

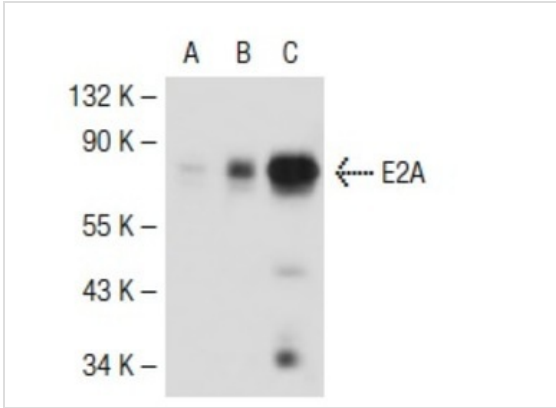
Alternative Names	epitope mapping at the C-terminus of E2A of human origin
Tissue Specificity	epitope mapping at the C-terminus of E2A of human origin

Database Links

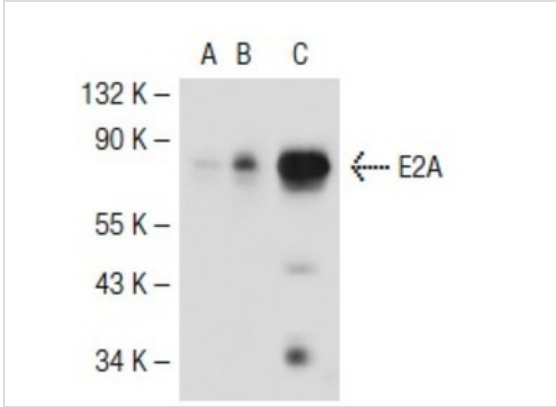
Application



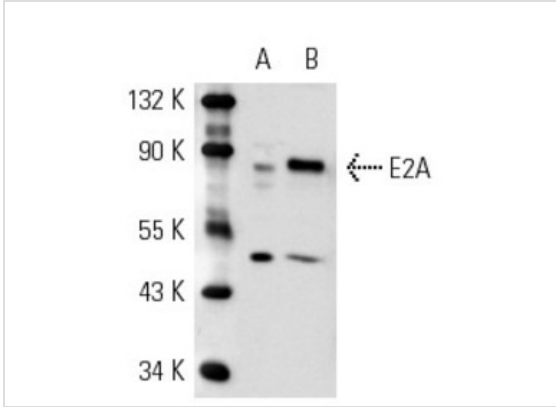
Application
Immunoperoxidase staining of formalin fixed, paraffin-embedded human lymph node tissue showing nuclear staining of reaction center cells at low (A) and high (B) magnification. Kindly provided by The Swedish Human Protein Atlas (HPA) program.



Application
Western blot analysis of E2A expression in non-transfected 293T: (A), mouse E2A transfected 293T: (B) and Jurkat (C) whole cell lysates.

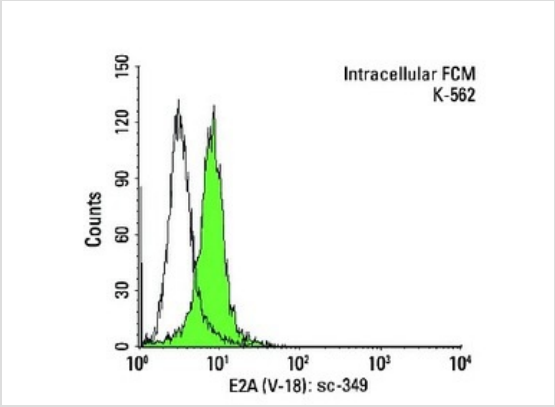
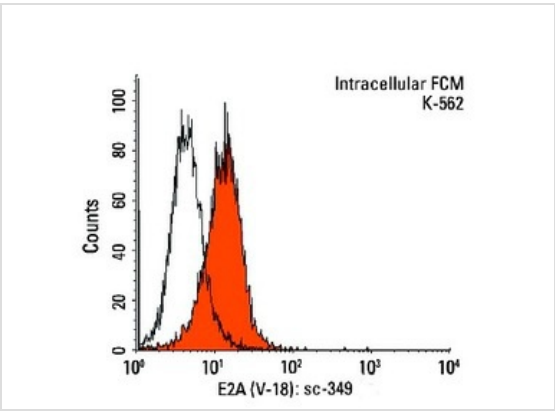


Application
Western blot analysis of E2A expression in non-transfected 293T: (A), mouse E2A transfected 293T: (B) and Jurkat (C) whole cell lysates.



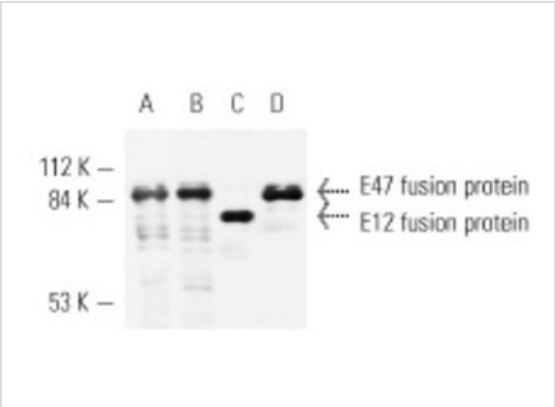
Application
Western blot analysis of E2A expression in non-transfected: (A) and mouse E2A transfected: (B) 293 whole cell lysates.

Application
Indirect, intracellular FCM analysis of fixed and permeabilized K-562 cells stained with E2A (V-18), followed by PE-conjugated goat anti-rabbit IgG: . Black line histogram represents the isotype control, normal rabbit IgG: .



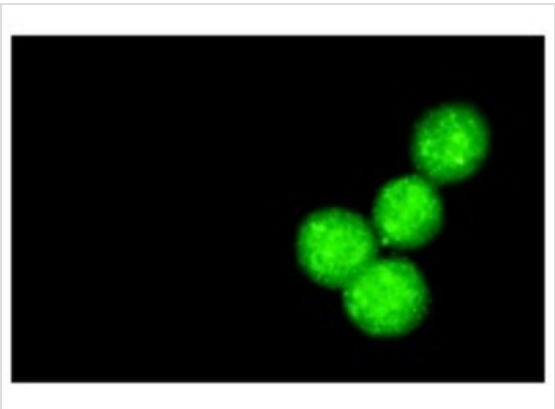
Application

Indirect, intracellular FCM analysis of fixed and permeabilized K-562 cells stained with E2A (V-18), followed by FITC-conjugated goat anti-rabbit IgG: . Black line histogram represents the isotype control, normal rabbit IgG: .



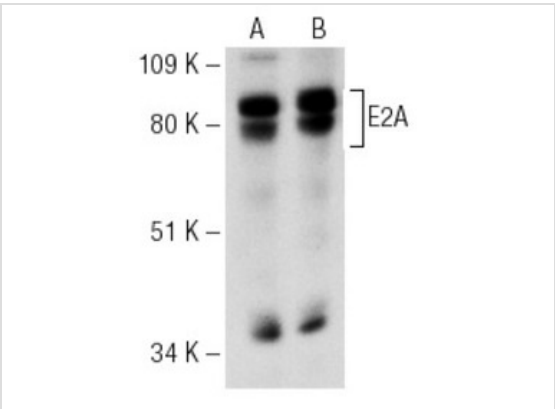
Application

Antibodies tested include E2A (N-649): (A), E2A (Yae): (B) and E2A (V-18): (C,D).



Application

Immunofluorescence staining of methanol-fixed K-562 cells showing nuclear staining.



Application

Western blot analysis of E2A expression in Jurkat (A) and K-562 (B) whole cell lysates.

Application Notes	recommended for detection of E2A isoforms E12 and E47 of mouse, rat and human origin by WB, I P, IF, IHC(P), ELISA and indirect FCM using PE (sc-3739)- or FITC (sc-2012)-conjugated goat anti-ra bbit IgG; also reactive with additional species, including equine, canine and bovine:
-------------------	---

Additional Information

Form	Liquid
Storage Instructions	For short-term storage, store at 4° C. For long-term storage, aliquot and store at -20°C or below. Avoid multiple freeze-thaw cycles.
Storage Buffer	phosphate buffered saline , pH 7.4, 150mM NaCl, 0.02% sodium azide and 50% glycerol.
Note	The product is for research use only,not for use in diagnostic or therapeutic procedures.

OmnimAbs.com

order@Omnimabs.com
506 N. GARFIELD AVE #210 ALHAMBRA, CA 91801
This product is for research use only and is not approved for use in humans or in clinical diagnosis. Primary Antibodies are guaranteed for 1 year from date of receipt