



Catalog: OM168923

Scan to get more validated information



# E2F-4 Antibody (A-20)

Catalog: OM168923

☐ 100ul

## Product profile

Product name	E2F-4 Antibody (A-20)
Antibody Type	Primary Antibodies
Modification Notes	<p>The human retinoblastoma gene product appears to play an important role in the negative regulation of cell proliferation. Functional inactivation of Rb can be mediated either through mutation or as a consequence of interaction with DNA tumor virus-encoded proteins. Of all the Rb associations described to date, the identification of a complex between Rb and the transcription factor E2F most directly implicates Rb in regulation of cell proliferation. E2F was originally identified through its role in transcriptional activation of the adenovirus E2 promoter. Sequences homologous to the E2F binding site have been found upstream of a number of genes that encode proteins with putative functions in the G1 and S phases of the cell cycle. E2F-1 is a member of a broader family of transcription regulators including E2F-2, E2F-3, E2F-4, E2F-5, E2F-6 and E2F-7 each of which forms heterodimers with a second protein, DP-1, forming an "active" E2F transcriptional regulatory complex.</p>

## Key Feature

Clonality	Polyclonal
Isotype	IgG
Host Species	Rabbit
Tested Applications	WB ,IP ,IF ,FC ,ELISA ,GS ,ChIP
Species Reactivity	Human Mouse Rat
Concentration	1mg/ml
Purification	Affinity purified

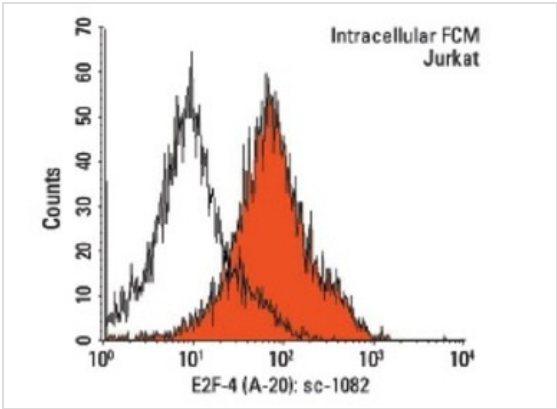
## Target Information

Alternative Names	epitope mapping near the C-terminus of E2F-4 of human origin
Tissue Specificity	epitope mapping near the C-terminus of E2F-4 of human origin

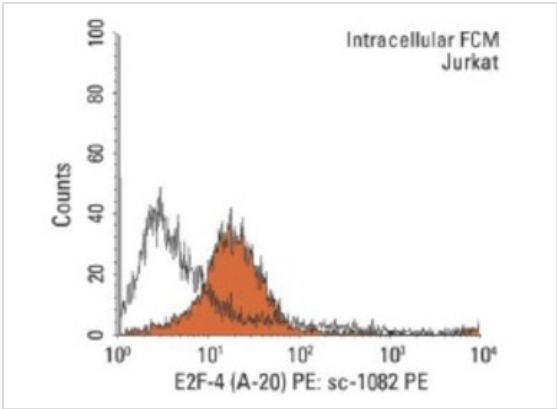
Database Links

Entrez Gene 1874

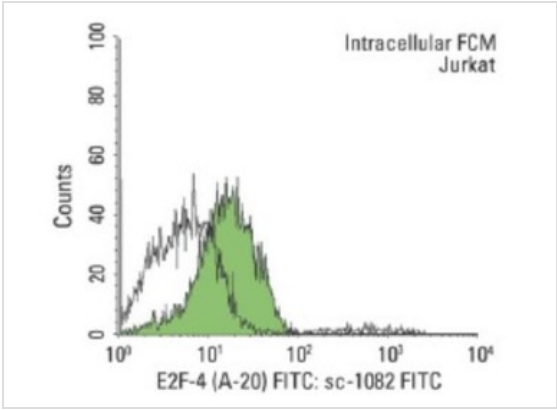
Application



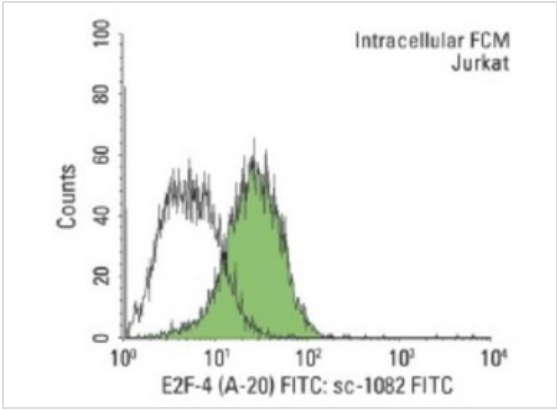
**Application**  
Indirect, intracellular FCM analysis of fixed and permeabilized Jurkat cells stained with E2F-4 (A-20), followed by PE-conjugated goat anti-rabbit IgG: . Black line histogram represents the isotype control, normal rabbit IgG: . Antibody tested:E2F-4 (A-20): .



**Application**  
Indirect, intracellular FCM analysis of fixed and permeabilized Jurkat cells stained with E2F-4 (A-20), followed by PE-conjugated mouse anti-rabbit IgG: . Black line histogram represents the isotype control, normal rabbit IgG: .

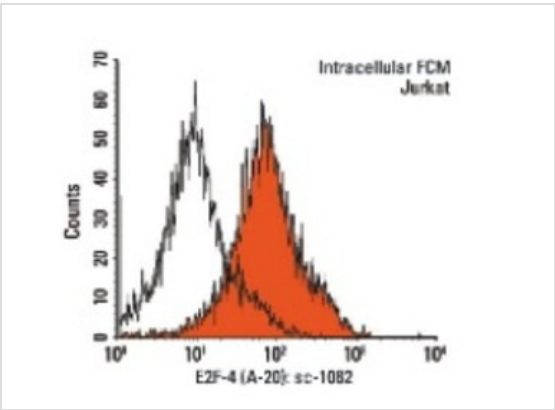


**Application**  
Indirect, intracellular FCM analysis of fixed and permeabilized Jurkat cells stained with E2F-4 (A-20), followed by FITC-conjugated donkey anti-rabbit IgG: . Black line histogram represents the isotype control, normal rabbit IgG: .

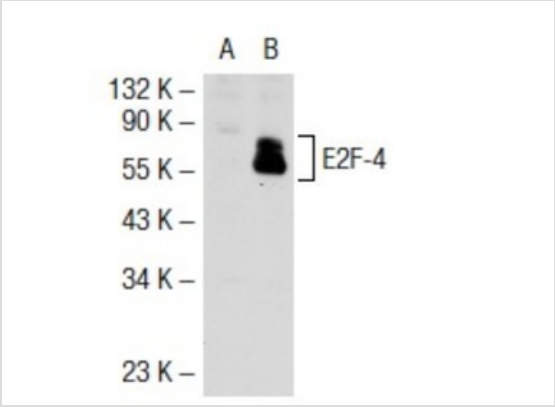


**Application**  
Indirect, intracellular FCM analysis of fixed and permeabilized Jurkat cells stained with E2F-4 (A-20), followed by FITC-conjugated chicken anti-rabbit IgG: . Black line histogram represents the isotype control, normal rabbit IgG: .

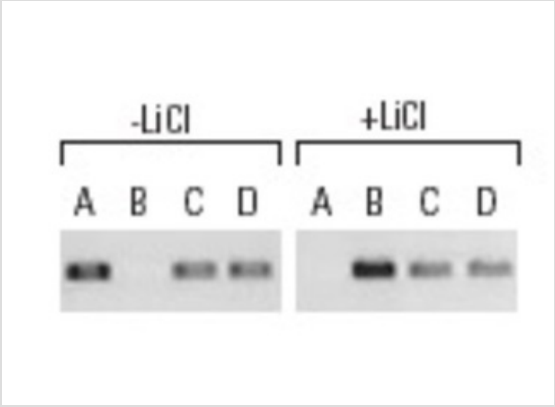
**Application**  
Indirect, intracellular FCM analysis of fixed and permeabilized Jurkat cells stained with E2F-4 (A-20), followed by FITC-conjugated goat anti-rabbit IgG: . Black line histogram represents the isotype control, normal rabbit IgG: .



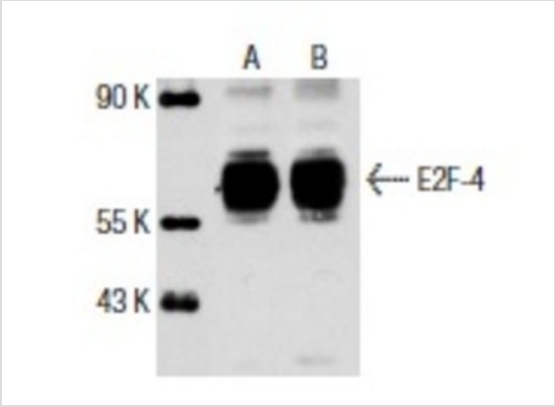
histogram represents the isotype control, normal rabbit IgG: .



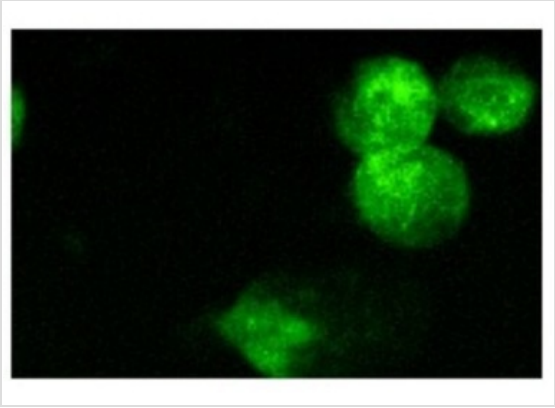
**Application**  
Western blot analysis of E2F-4 expression in non-transfected: (A) and mouse E2F-4 transfected: (B) 293T whole cell lysates.



**Application**  
Antibodies tested include HDAC1 (H-15): , HDAC1 (C-19): and HDAC1 (H-11): (A),  $\beta$ -catenin (H-120): ,  $\beta$ -catenin (C-18): and  $\beta$ -catenin (E-5): (B), E2F-4 (A-20): , E2F-4 (D-3): , E2F-4 (RK-13): and E2F-4 (C-20): (C), and p130 (C-20): , p130 (211.6): and p130 (H-125): (D). Data kindly provided by M.G. Rosenfeld and reproduced with permission from Proc. Natl. Acad. Sci. 100: 3245-3250. Copyright 2003 National Academy of Sciences, USA.



**Application**  
Western blot analysis of E2F-4 expression in Jurkat (A) and Y79 (B) nuclear extracts.



**Application**  
Immunofluorescence staining of methanol-fixed Jurkat cells showing nuclear staining.

<b>Application Notes</b>	recommended for detection of E2F-4 and, to a lesser extent, E2F-5 of mouse, rat and human origin by WB, IP, IF, ELISA and indirect FCM using PE (sc-3739)- and FITC (sc-2012)-conjugated goat anti-rabbit IgG; also reactive with additional species, including equine, canine, bovine, porcine and avian:
--------------------------	------------------------------------------------------------------------------------------------------------------------------------------------------------------------------------------------------------------------------------------------------------------------------------------------------------

## Additional Information

---

<b>Form</b>	Liquid
<b>Storage Instructions</b>	For short-term storage, store at 4° C. For long-term storage, aliquot and store at -20°C or below. Avoid multiple freeze-thaw cycles.
<b>Storage Buffer</b>	phosphate buffered saline , pH 7.4, 150mM NaCl, 0.02% sodium azide and 50% glycerol.
<b>Note</b>	The product is for research use only, not for use in diagnostic or therapeutic procedures.

# OmnimAbs.com

---

order@Omnimabs.com

506 N. GARFIELD AVE #210 ALHAMBRA, CA 91801

This product is for research use only and is not approved for use in humans or in clinical diagnosis. Primary Antibodies are guaranteed for 1 year from date of receipt

---