



Catalog: OM277859

Scan to get more validated information



ELL Antibody

Catalog: OM277859

☐ 100ug

Product profile

Product name	ELL Antibody
Antibody Type	Primary Antibodies
Product description	ELL was shown to encode a previously uncharacterized elongation factor that can increase the catalytic rate of RNA polymerase II transcription by suppressing transient pausing by polymerase at multiple sites along the DNA. Functionally, ELL resembles Elongin (SIII), a transcription elongation factor regulated by the product of the von Hippel-Lindau (VHL) tumor suppressor gene. ¹ Wiederschain, D., (2003) Mol. Cell. Biol. 23 (12), 4230-4246.
Immunogen	Antibody produced in rabbits immunized with a synthetic peptide corresponding a region of human ELL.

Key Feature

Clonality	Polyclonal
Host Species	Rabbit
Tested Applications	ELISA ,IHC ,WB
Species Reactivity	Human
Concentration	1 mg/ml
Purification	Protein A

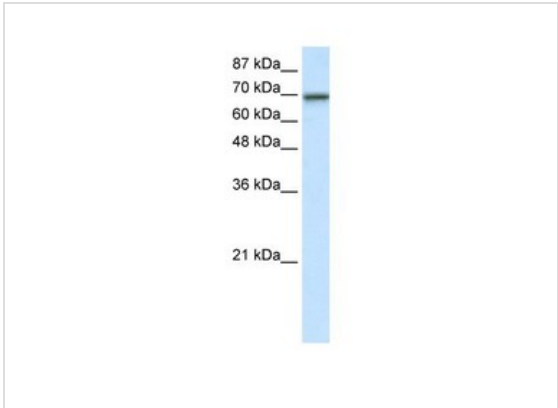
Target Information

Gene Symbol	ELL
Alternative Names	ELL, MEN, ELL1, PPP1R68, C19orf17
Molecular Weight(MW)	68 kDa

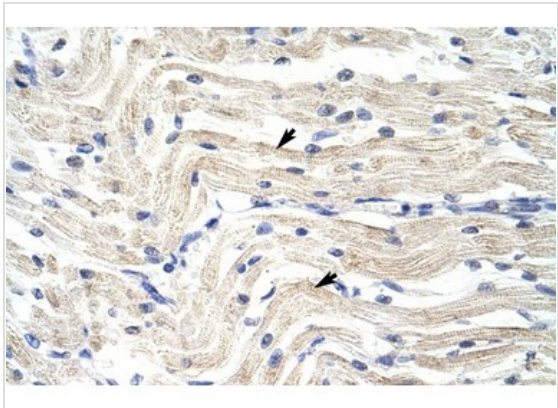
Database Links

Entrez Gene	8178
Protein Accession	NP_006523

Application



Application
Antibody used in WB on Transfected 293T at 7.5 ug/ml.



Application
Antibody used in IHC on Human Muscle.

Positive Control	1) Tranfected 293T Cell Lysate
Application Notes	ELL antibody can be used for detection of ELL by ELISA at 1:1562500. ELL antibody can be used for detection of ELL by western blot at 7.5 µg/mL, and HRP conjugated secondary antibody should be diluted 1:50,000 - 100,000.:

Additional Information

Form	Liquid
Storage Instructions	For short periods of storage (days) store at 4°C. For longer periods of storage, store ELL antibody at -20°C. As with any antibody avoid repeat freeze-thaw cycles.
Storage Buffer	IgG in phosphate buffered saline , pH 7.4, 150mM NaCl, 0.02% sodium azide and 50% glycerol.Store at -20 °C.Stable for 12 months from date of receipt
Note	The product is for research use only,not for use in diagnostic or therapeutic procedures.

OmnimAbs.com

