



Catalog: OM277860

Scan to get more validated information



# ELL Antibody

Catalog: OM277860

☐ 100ug

## Product profile

Product name	ELL Antibody
Antibody Type	Primary Antibodies
Product description	1) Liu, L., et al. Prostate 70(7):797-805(2010)
Immunogen	This ELL antibody is generated from rabbits immunized with a KLH conjugated synthetic peptide between 516-545 amino acids from the C-terminal region of human ELL.

## Key Feature

Clonality	Polyclonal
Isotype	Ig
Host Species	Rabbit
Tested Applications	WB
Species Reactivity	Human Mouse
Concentration	1 mg/ml
Purification	Affinity purified

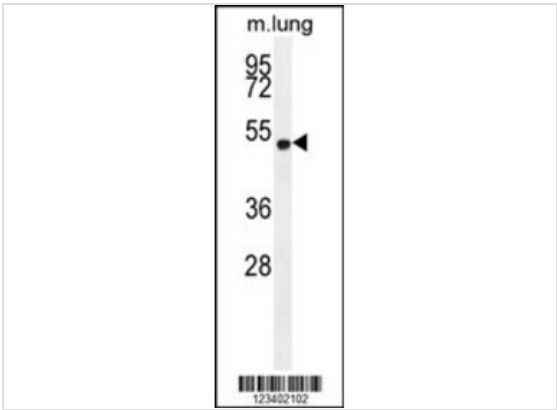
## Target Information

Gene Symbol	ELL
Alternative Names	RNA polymerase II elongation factor ELL, Eleven-nineteen lysine-rich leukemia protein, ELL, C19orf17
Molecular Weight(MW)	68 kDa

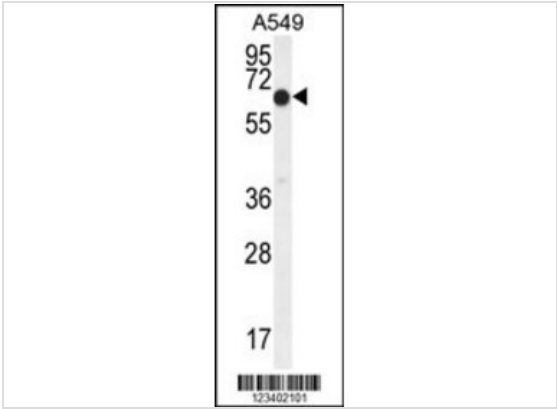
## Database Links

Entrez Gene	8178
Protein Accession	P55199

## Application



**Application**  
Western blot analysis in mouse lung tissue lysates (35ug/lane).This demonstrates the Edetected the EK12 protein (arrow).



**Application**  
Western blot analysis in A549 cell line lysates (35ug/lane).This demonstrates the Edetected the EK12 protein (arrow).

**Application Notes** For WB starting dilution is: 1:1000:

## Additional Information

Form	Liquid
Storage Instructions	Store at 4 °C for three months and -20 °C, stable for up to one year. As with all antibodies care should be taken to avoid repeated freeze thaw cycles. Antibodies should not be exposed to prolonged high temperatures.
Storage Buffer	Supplied in PBS with 0.09% (W/V) sodium azide.
Note	The product is for research use only,not for use in diagnostic or therapeutic procedures.

# OmnimAbs.com

order@Omnimabs.com  
506 N. GARFIELD AVE #210 ALHAMBRA, CA 91801  
This product is for research use only and is not approved for use in humans or in clinical diagnosis. Primary Antibodies are guaranteed for 1 year from date of receipt