



Catalog: OM169451

Scan to get more validated information



ERK 1 Antibody (C-16) AC

Catalog: OM169451

☐ 100ul

Product profile

Product name	ERK 1 Antibody (C-16) AC
Antibody Type	Primary Antibodies
Modification Notes	Mitogen-activated protein kinase (MAPK) signaling pathways involve two closely related MAP kinases, known as extracellular-signal-related kinase 1 (ERK 1, p44) and 2 (ERK 2, p42). Growth factors, steroid hormones, G protein-coupled receptor ligands and neurotransmitters can initiate MAPK signaling pathways. Activation of ERK 1 and ERK 2 requires phosphorylation by upstream kinases such as MAP kinasekinase (MEK), MEK kinase and Raf-1. ERK 1 and ERK 2 phosphorylation can occur at specific tyrosine and threonine sites mapping within consensus motifs that include the threonine-glutamate-tyrosine motif. ERK activation leads to dimerization with other ERKs and subsequent localization to the nucleus. Active ERK dimers phosphorylate serine and threonine residues on nuclear proteins and influence a host of responses that include proliferation, differentiation, transcription regulation and development. The human ERK 1 gene maps to chromosome 16p12-p11.2 and encodes a 379 amino acid protein that shares 83% sequence identity to ERK 2.

Key Feature

Clonality	Polyclonal
Isotype	IgG
Host Species	Rabbit
Tested Applications	WB ,IP ,IF ,IHC ,FC ,ELISA
Species Reactivity	Human Mouse Rat
Concentration	1mg/ml
Purification	Affinity purified

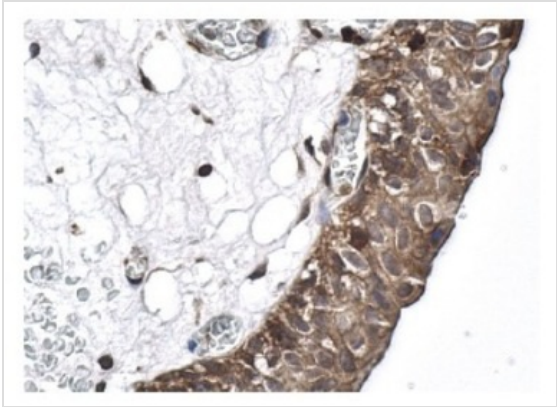
Target Information

Alternative Names	epitope mapping at the C-terminus of ERK 1 of rat origin
Tissue Specificity	epitope mapping at the C-terminus of ERK 1 of rat origin

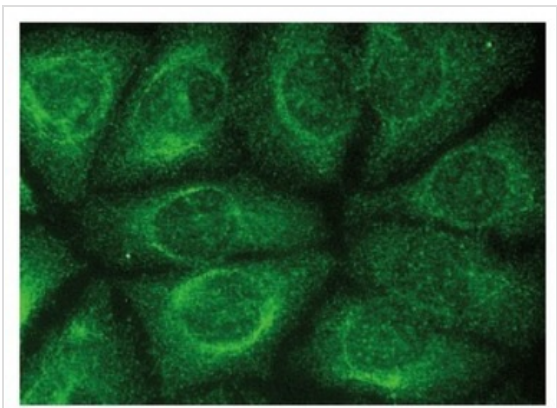
Database Links

Entrez Gene 5595

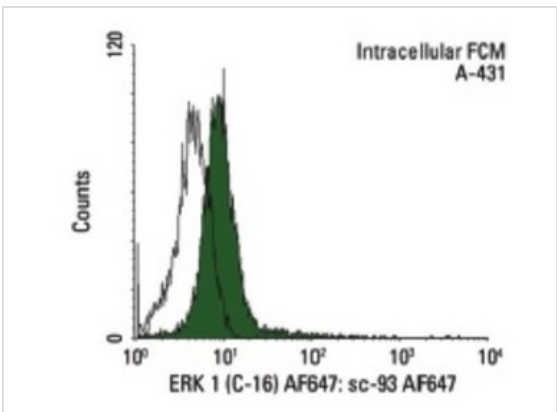
Application



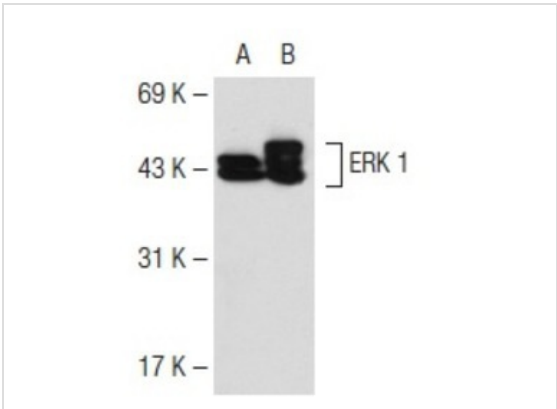
Application
Immunoperoxidase staining of formalin fixed, paraffin-embedded human urinary bladder tissue showing cytoplasmic and nuclear staining of urothelial cells.



Application
Immunofluorescence staining of methanol-fixed HeLa cells showing cytoplasmic and nuclear localization.

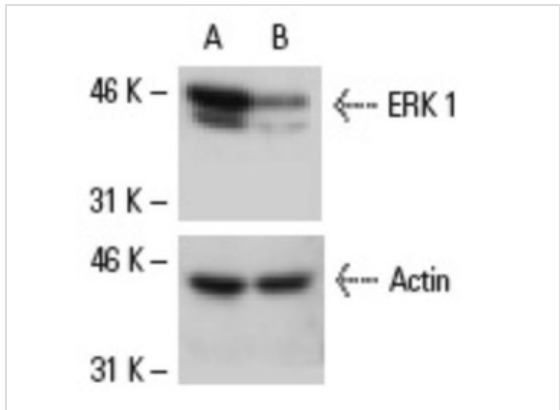
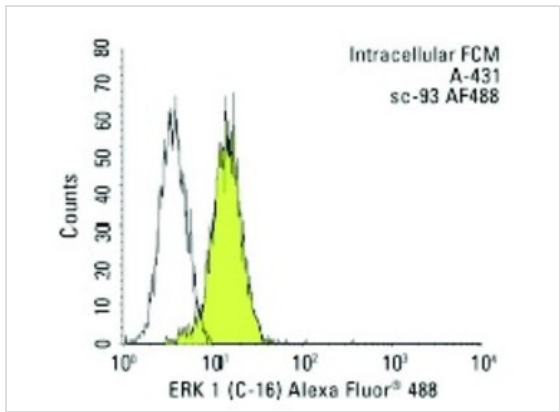


Application
Intracellular FCM analysis of fixed and permeabilized A-431 cells. Black line histogram represents the isotype control, normal rabbit IgG: .



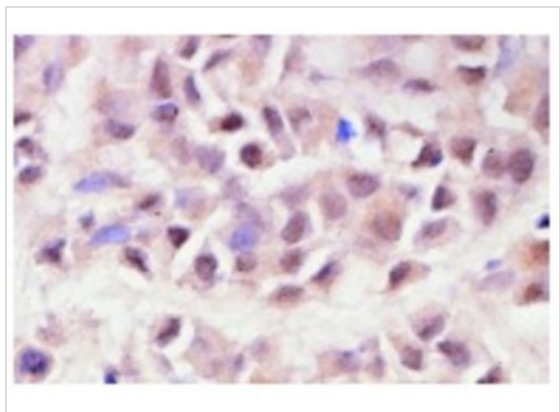
Application
Western blot analysis of ERK 1 expression in non-transfected: (A) and human ERK 1 transfected: (B) 293T whole cell lysates.

Application
Intracellular FCM analysis of fixed and permeabilized A-431 cells. Black line histogram represents the isotype control, normal rabbit IgG: .



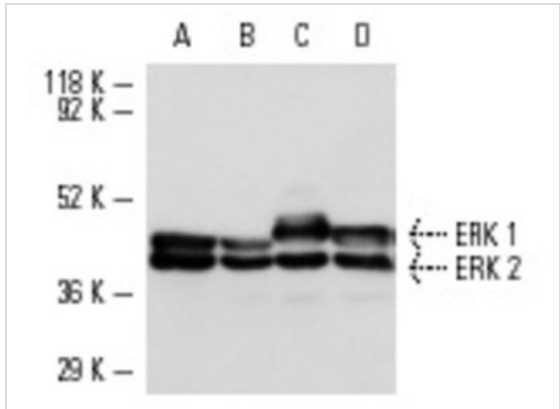
Application

Western blot analysis of ERK 1 expression in non-transfected control (A) and ERK 1 siRNA transfected (B) NIH/3T3 cells. Blot probed with ERK 1 (C-16): . Actin (C-2): used as specificity and loading control.



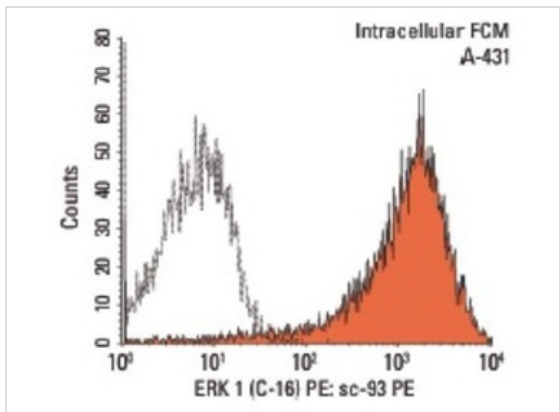
Application

Immunoperoxidase staining of formalin-fixed, paraffin-embedded human breast tumor showing cytoplasmic and nuclear staining.



Application

Western blot analysis of ERK 1 and ERK 2 expression in A-431 (A), HeLa (B), KNRK (C) and NIH/3T3 (D) whole cell lysates.



Application

Intracellular FCM analysis of fixed and permeabilized A-431 cells. Black line histogram represents the isotype control, normal rabbit IgG: .

Application Notes	recommended for detection of ERK 1 p44 and, to a lesser extent, ERK 2 p42 of mouse, rat, human, avian, frog and zebrafish origin by WB, IP, IF, IHC(P), FCM and ELISA; also reactive with additional species, including equine, canine, bovine and porcine:
--------------------------	---

Additional Information

Form	Liquid
Storage Instructions	For short-term storage, store at 4° C. For long-term storage, aliquot and store at -20°C or below. Avoid multiple freeze-thaw cycles.
Storage Buffer	phosphate buffered saline , pH 7.4, 150mM NaCl, 0.02% sodium azide and 50% glycerol.
Note	The product is for research use only,not for use in diagnostic or therapeutic procedures.

OmnimAbs.com

order@Omnimabs.com

506 N. GARFIELD AVE #210 ALHAMBRA, CA 91801

This product is for research use only and is not approved for use in humans or in clinical diagnosis. Primary Antibodies are guaranteed for 1 year from date of receipt
