



Catalog: OM154793

Scan to get more validated information



ERK 3 Antibody (D-23)

Catalog: OM154793

☐ 100ul

Product profile

Product name	ERK 3 Antibody (D-23)
Antibody Type	Primary Antibodies
Modification Notes	Mitogen-activated protein kinase (MAPK) signaling pathways involve closely related MAP kinases, including extracellular-signal-related kinase 3 (ERK 3, also designated PRKM6 and p97MAPK). Serum, growth factors and phorbol esters can initiate ERK 3 signaling pathways. Despite lacking a definitive nuclear localization sequence, ERK 3 constitutively localizes to the nucleus upon activation. p38 pathway activation-dependent upregulation of ERK 3 is independent of the status of p53, Bcl-2 and caspase-3 during cell stress and damage induced by proteasome inhibition, suggesting ERK 3 in part mediates intracellular defense or cell rescue. The human ERK 3 gene maps to chromosome 15q21.2 and encodes a 721 amino acid protein.

Key Feature

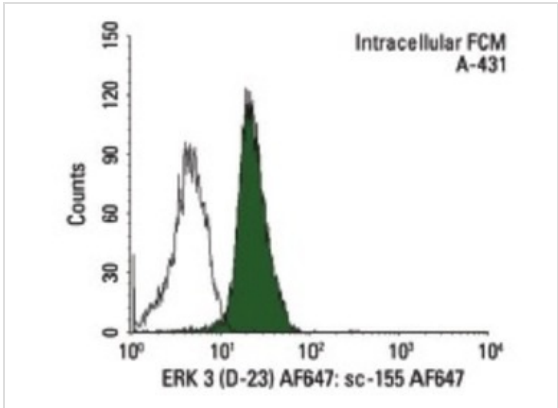
Clonality	Polyclonal
Isotype	IgG
Host Species	Rabbit
Tested Applications	ELISA ,FC ,IF ,IP ,WB
Species Reactivity	Human Mouse Rat
Concentration	1mg/ml
Purification	Affinity purified

Target Information

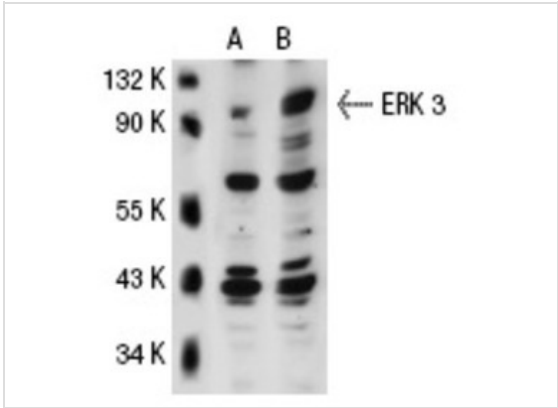
Alternative Names	epitope mapping subdomain XI of ERK 3 of rat origin
Molecular Weight(MW)	Predicted band size: 83 kDa Observed band size: 105 kDa
Tissue Specificity	epitope mapping subdomain XI of ERK 3 of rat origin

Database Links

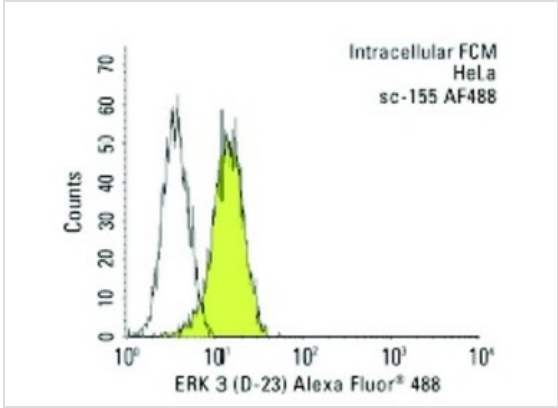
Application



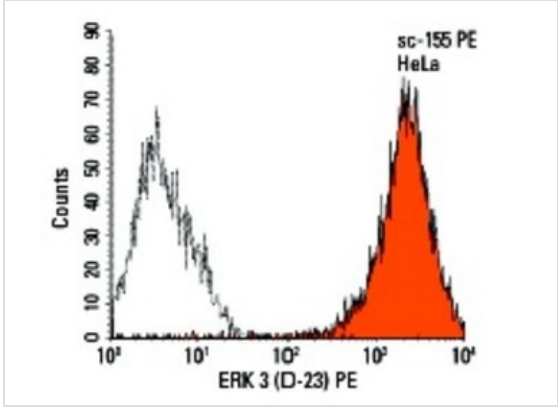
Application
Intracellular FCM analysis of fixed and permeabilized A-431 cells. Black line histogram represents the isotype control, normal rabbit IgG: .



Application
Western blot analysis of ERK 3 expression in non-transfected: (A) and human ERK 3 transfected: (B) 293T whole cell lysates.



Application
Intracellular FCM analysis of fixed and permeabilized HeLa cells. Black line histogram represents the isotype control, normal rabbit IgG: .



Application
Intracellular FCM analysis of fixed and permeabilized HeLa cells. Black line histogram represents the isotype control, normal rabbit IgG: .

Application Notes

recommended for detection of ERK 3 of mouse, rat and human origin by WB, IP, IF, FCM and ELISA ; also reactive with additional species, including equine, canine, bovine, porcine and avian:

Additional Information

Form	Liquid
Storage Instructions	For short-term storage, store at 4° C. For long-term storage, aliquot and store at -20°C or below. Avoid multiple freeze-thaw cycles.
Storage Buffer	phosphate buffered saline , pH 7.4, 150mM NaCl, 0.02% sodium azide and 50% glycerol.
Note	The product is for research use only,not for use in diagnostic or therapeutic procedures.

OmnimAbs.com

order@Omnimabs.com

506 N. GARFIELD AVE #210 ALHAMBRA, CA 91801

This product is for research use only and is not approved for use in humans or in clinical diagnosis. Primary Antibodies are guaranteed for 1 year from date of receipt
