



Catalog: OM154711

Scan to get more validated information



ERK 3 Antibody (I-15)

Catalog: OM154711

☐ 100ul

Product profile

Product name	ERK 3 Antibody (I-15)
Antibody Type	Primary Antibodies
Modification Notes	Mitogen-activated protein kinase (MAPK) signaling pathways involve closely related MAP kinases, including extracellular-signal-related kinase 3 (ERK 3, also designated PRKM6 and p97MAPK). Serum, growth factors and phorbol esters can initiate ERK 3 signaling pathways. Despite lacking a definitive nuclear localization sequence, ERK 3 constitutively localizes to the nucleus upon activation. p38 pathway activation-dependent upregulation of ERK 3 is independent of the status of p53, Bcl-2 and caspase-3 during cell stress and damage induced by proteasome inhibition, suggesting ERK 3 in part mediates intracellular defense or cell rescue. The human ERK 3 gene maps to chromosome 15q21.2 and encodes a 721 amino acid protein.

Key Feature

Clonality	Polyclonal
Isotype	IgG
Host Species	Rabbit
Tested Applications	WB ,IP ,IF ,IHC ,FC ,ELISA
Species Reactivity	Human Mouse Rat
Concentration	1mg/ml
Purification	Affinity purified

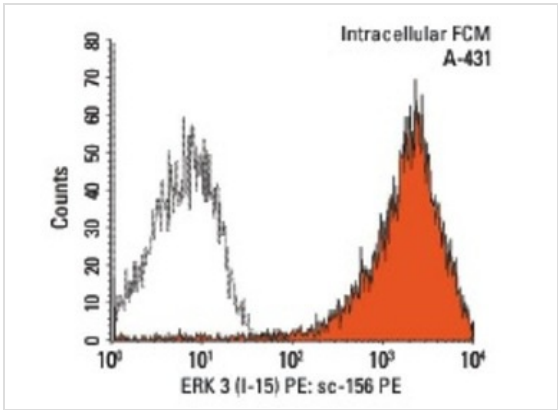
Target Information

Alternative Names	epitope mapping within an internal region of ERK 3 of rat origin
Tissue Specificity	epitope mapping within an internal region of ERK 3 of rat origin

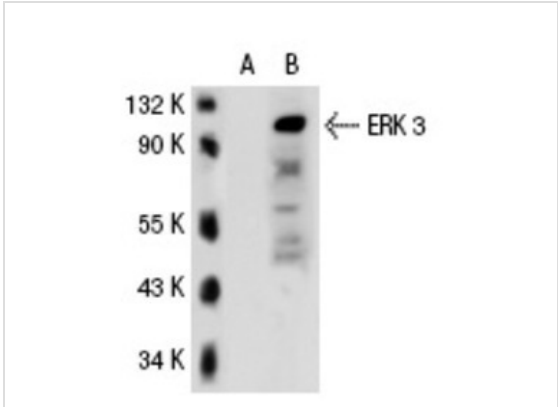
Database Links

Entrez Gene	5597
-------------	------

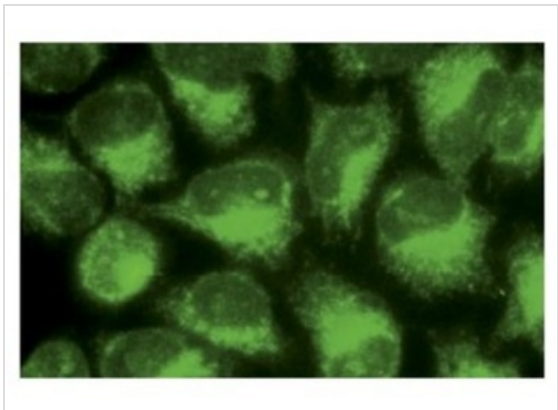
Application



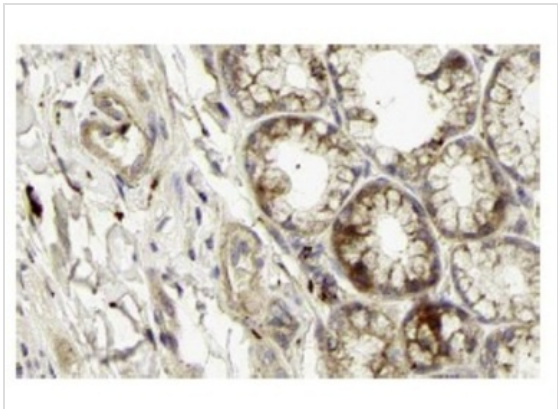
Application
Intracellular FCM analysis of fixed and permeabilized A-431 cells. Black line histogram represents the isotype control, normal rabbit IgG: .



Application
Western blot analysis of ERK 3 expression in non-transfected: (A) and human ERK 3 transfected: (B) 293T whole cell lysates.

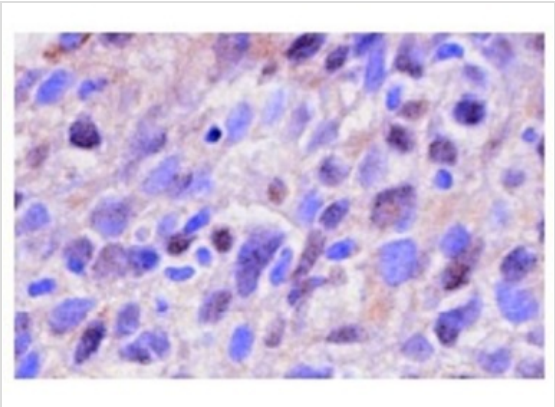
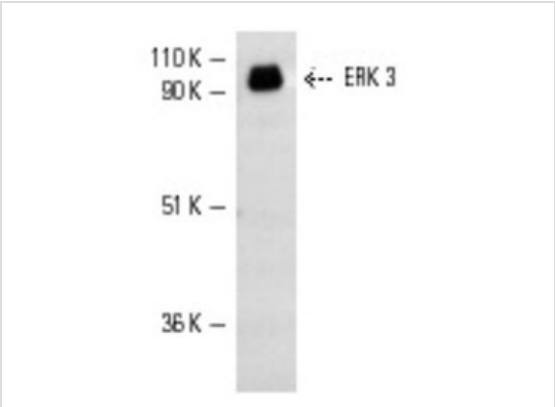
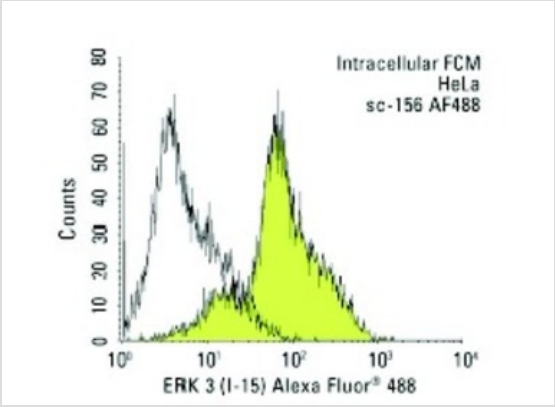
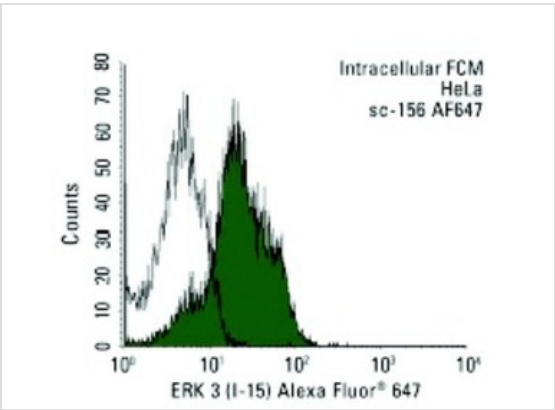


Application
Immunofluorescence staining of methanol-fixed HeLa cells showing cytoplasmic localization.



Application
Immunoperoxidase staining of formalin fixed, paraffin-embedded human duodenum tissue showing cytoplasmic staining of glandular cells. Kindly provided by The Swedish Human Protein Atlas (HPA) program.

Application
Intracellular FCM analysis of fixed and permeabilized HeLa cells. Black line histogram represents the isotype control, normal rabbit IgG: .



Application

Intracellular FCM analysis of fixed and permeabilized HeLa cells. Black line histogram represents the isotype control, normal rabbit IgG: .

Application

Western blot analysis of ERK 3 expression in PC-12 whole cell lysate.

Application

Immunoperoxidase staining of formalin-fixed, paraffin-embedded human lung tumor.

Application Notes

recommended for detection of ERK 3 of mouse, rat and human origin by WB, IP, IF, IHC(P), FCM and ELISA; also reactive with additional species, including equine, canine and porcine:

Additional Information

Form	Liquid
Storage Instructions	For short-term storage, store at 4° C. For long-term storage, aliquot and store at -20°C or below. Avoid

Storage Buffer

multiple freeze-thaw cycles.
phosphate buffered saline , pH 7.4, 150mM NaCl, 0.02% sodium azide and 50% glycerol.

Note

The product is for research use only,not for use in diagnostic or therapeutic procedures.

OmnimAbs.com

order@Omnimabs.com

506 N. GARFIELD AVE #210 ALHAMBRA, CA 91801

This product is for research use only and is not approved for use in humans or in clinical diagnosis. Primary Antibodies are guaranteed for 1 year from date of receipt
