



Catalog: OM154755

Scan to get more validated information



# ERK 3 Antibody (I-15) PE

Catalog: OM154755

☐ 100ul

## Product profile

Product name	ERK 3 Antibody (I-15) PE
Antibody Type	Primary Antibodies
Modification Notes	Mitogen-activated protein kinase (MAPK) signaling pathways involve closely related MAP kinases, including extracellular-signal-related kinase 3 (ERK 3, also designated PRKM6 and p97MAPK). Serum, growth factors and phorbol esters can initiate ERK 3 signaling pathways. Despite lacking a definitive nuclear localization sequence, ERK 3 constitutively localizes to the nucleus upon activation. p38 pathway activation-dependent upregulation of ERK 3 is independent of the status of p53, Bcl-2 and caspase-3 during cell stress and damage induced by proteasome inhibition, suggesting ERK 3 in part mediates intracellular defense or cell rescue. The human ERK 3 gene maps to chromosome 15q21.2 and encodes a 721 amino acid protein.

## Key Feature

Clonality	Polyclonal
Isotype	IgG
Host Species	Rabbit
Tested Applications	ELISA ,FC ,IF ,IHC ,IP ,WB
Species Reactivity	Human Mouse Rat
Concentration	1mg/ml
Purification	Affinity purified

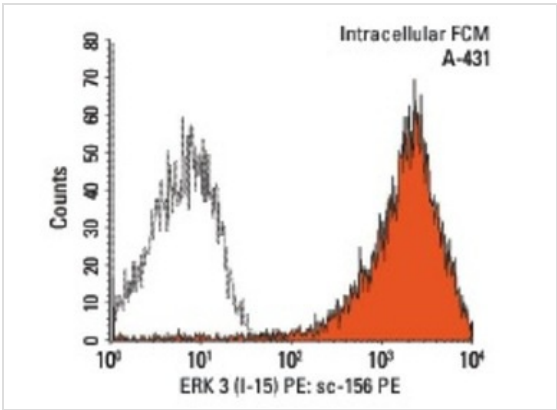
## Target Information

Alternative Names	epitope mapping within an internal region of ERK 3 of rat origin
Tissue Specificity	epitope mapping within an internal region of ERK 3 of rat origin

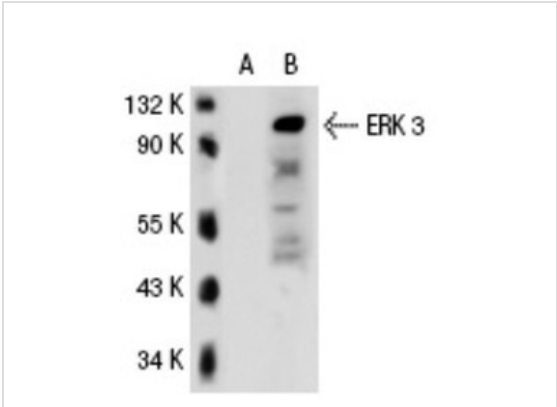
## Database Links

Entrez Gene	5597
-------------	------

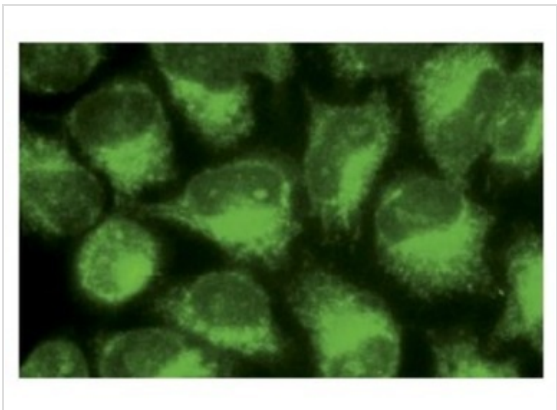
# Application



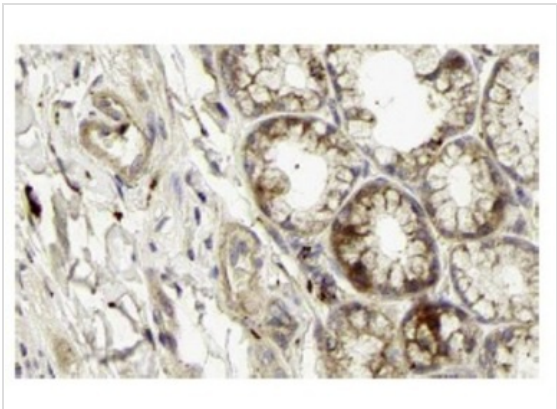
**Application**  
Intracellular FCM analysis of fixed and permeabilized A-431 cells. Black line histogram represents the isotype control, normal rabbit IgG: .



**Application**  
Western blot analysis of ERK 3 expression in non-transfected: (A) and human ERK 3 transfected: (B) 293T whole cell lysates.

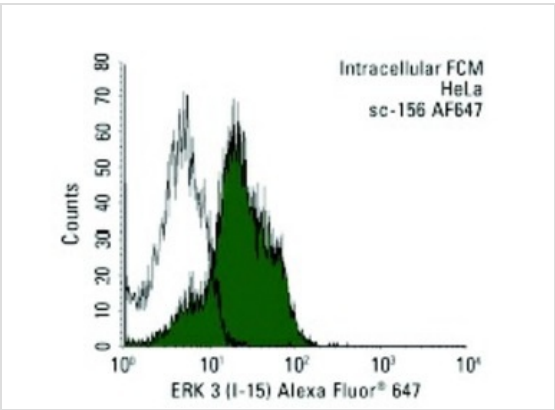


**Application**  
Immunofluorescence staining of methanol-fixed HeLa cells showing cytoplasmic localization.

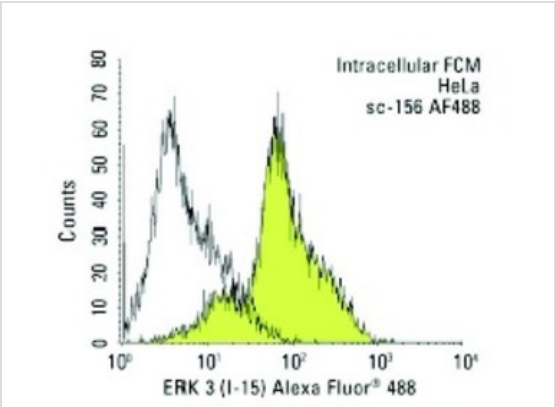


**Application**  
Immunoperoxidase staining of formalin fixed, paraffin-embedded human duodenum tissue showing cytoplasmic staining of glandular cells. Kindly provided by The Swedish Human Protein Atlas (HPA) program.

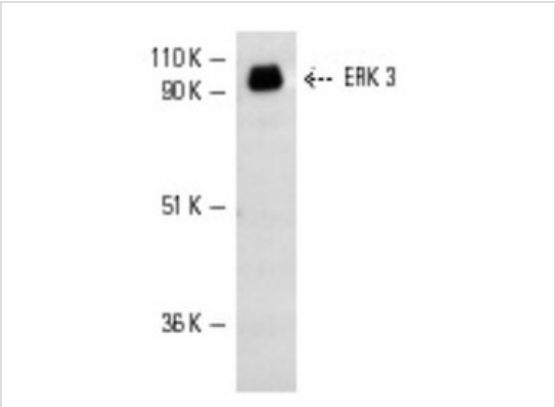
**Application**  
Intracellular FCM analysis of fixed and permeabilized HeLa cells. Black line histogram represents the isotype control, normal rabbit IgG: .



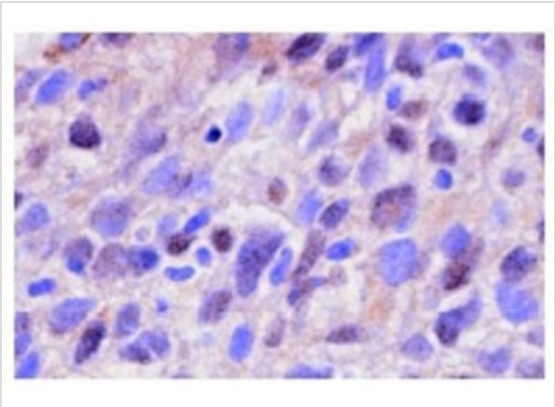
**Application**  
Intracellular FCM analysis of fixed and permeabilized HeLa cells. Black line histogram represents the isotype control, normal rabbit IgG: .



**Application**  
Western blot analysis of ERK 3 expression in PC-12 whole cell lysate.



**Application**  
Immunoperoxidase staining of formalin-fixed, paraffin-embedded human lung tumor.



**Application Notes**  
WB:1:100~1:500  
IP:1:20~1:100  
IF:1:20~1:100  
IHC:1:10~1:50

**Additional Information**

<b>Storage Instructions</b>	For short-term storage, store at 4° C. For long-term storage, aliquot and store at -20°C or below. Avoid multiple freeze-thaw cycles.
<b>Storage Buffer</b>	phosphate buffered saline , pH 7.4, 150mM NaCl, 0.02% sodium azide and 50% glycerol.
<b>Note</b>	The product is for research use only,not for use in diagnostic or therapeutic procedures.

# OmnimAbs.com

---

order@Omnimabs.com  
506 N. GARFIELD AVE #210 ALHAMBRA, CA 91801  
This product is for research use only and is not approved for use in humans or in clinical diagnosis. Primary Antibodies are guaranteed for 1 year from date of receipt

---