



Catalog: OM166976

Scan to get more validated information



EpoR Antibody (M-20)

Catalog: OM166976

☐ 100ul

Product profile

Product name	EpoR Antibody (M-20)
Antibody Type	Primary Antibodies
Modification Notes	Erythropoiesis is regulated through the interaction of erythropoietin (Epo) with its receptor, EpoR, a member of the cytokine superfamily of receptors. The human EpoR is a 507 amino acid transmembrane protein that forms homodimers following erythropoietin activation and is related to the interleukin 2 (IL-2) receptor b-chain subunit (IL-2Rb). EpoR and IL-2Rb share 45% amino acid identity within the box 1 and box 2 domains of their cytoplasmic regions while their remaining cytoplasmic sequences are highly divergent. These conserved domains are both required and sufficient for mitogenesis and for coupling ligand binding to the induction of tyrosine phosphorylation. The membrane proximal region is also required for the association of JAK2 with EpoR. The existence of multiple cross-linked complexes and differential ligand affinities suggests that EpoR may exist as a multireceptor complex.

Key Feature

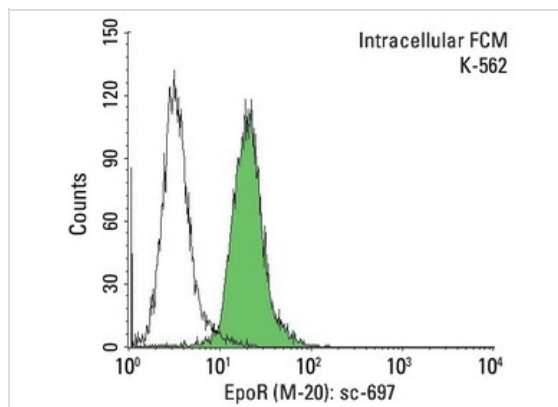
Clonality	Polyclonal
Isotype	IgG
Host Species	Rabbit
Tested Applications	WB ,IP ,IF ,FC ,ELISA
Species Reactivity	Human Mouse Rat
Concentration	1mg/ml
Purification	Affinity purified

Target Information

Alternative Names	epitope mapping within a C-terminal cytoplasmic domain of EpoR of mouse origin
Tissue Specificity	epitope mapping within a C-terminal cytoplasmic domain of EpoR of mouse origin

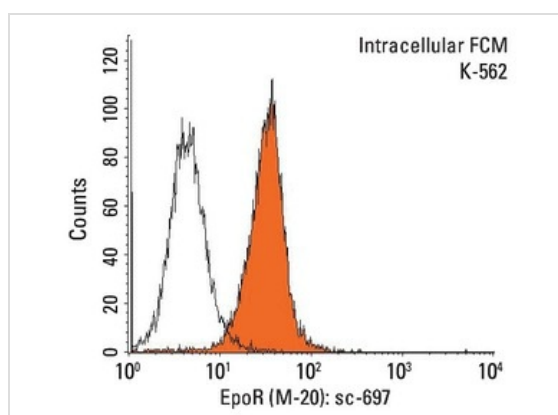
Database Links

Application



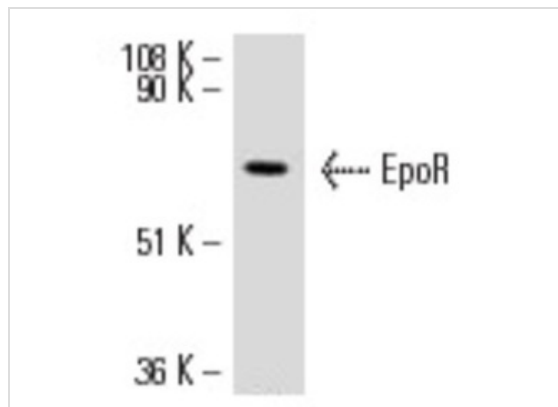
Application

Indirect, intracellular FCM analysis of fixed and permeabilized K-562 cells stained with EpoR (M-20), followed by FITC-conjugated goat anti-rabbit IgG: . Black line histogram represents the isotype control, normal rabbit IgG: .



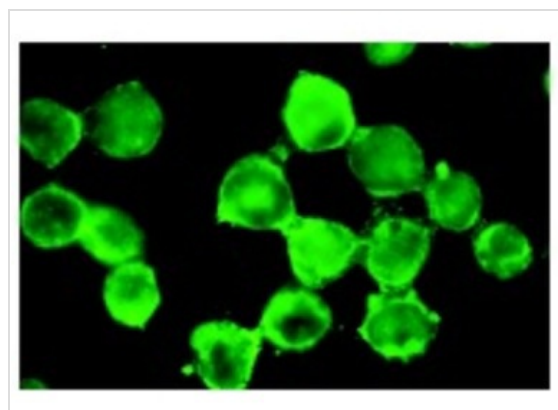
Application

Indirect FCM analysis of methanol permeabilized K-562 cells stained with EpoR (M-20), followed by PE-conjugated goat anti-rabbit IgG: .



Application

Western blot analysis of EpoR expression in GM-CSF-treated K-562 whole cell lysate.



Application

Immunofluorescence staining of methanol-fixed K-562 cells showing membrane staining.

Application Notes

recommended for detection of erythropoietin (Epo) receptor of mouse, rat and human origin by WB, IP, IF, ELISA and indirect FCM using PE (sc-3739)- and FITC (sc-2012)-conjugated goat anti-rabbit IgG:

Additional Information

Form	Liquid
Storage Instructions	For short-term storage, store at 4° C. For long-term storage, aliquot and store at -20°C or below. Avoid multiple freeze-thaw cycles.
Storage Buffer	phosphate buffered saline , pH 7.4, 150mM NaCl, 0.02% sodium azide and 50% glycerol.
Note	The product is for research use only,not for use in diagnostic or therapeutic procedures.

OmnimAbs.com

order@Omnimabs.com
506 N. GARFIELD AVE #210 ALHAMBRA, CA 91801
This product is for research use only and is not approved for use in humans or in clinical diagnosis. Primary Antibodies are guaranteed for 1 year from date of receipt