



Catalog: OM278946

Scan to get more validated information



# FLJ14768 Antibody

Catalog: OM278946

☐ 100ug

## Product profile

Product name	FLJ14768 Antibody
Antibody Type	Primary Antibodies
Product description	FLJ14768 is homologous to mouse and bovine Fiz1 (flt-3 interacting zinc finger). It interacts with NRL (neural retina leucine zipper). Possible role for Fiz1 as a transcriptional repressor.1) Mitton, K.P., et al., (2003) Hum. Mol. Genet. 12 (4), 365-373.
Immunogen	Antibody produced in rabbits immunized with a synthetic peptide corresponding a region of human FLJ14768.

## Key Feature

Clonality	Polyclonal
Host Species	Rabbit
Tested Applications	ELISA ,IHC ,WB
Species Reactivity	Human
Concentration	1 mg/ml
Purification	Protein A

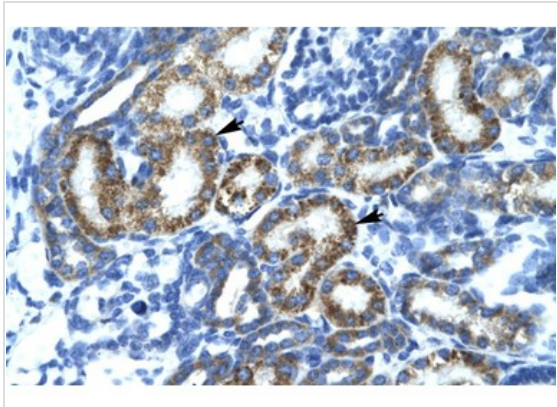
## Target Information

Gene Symbol	FIZ1
Alternative Names	FLJ14768, ZNF798
Molecular Weight(MW)	52 kDa

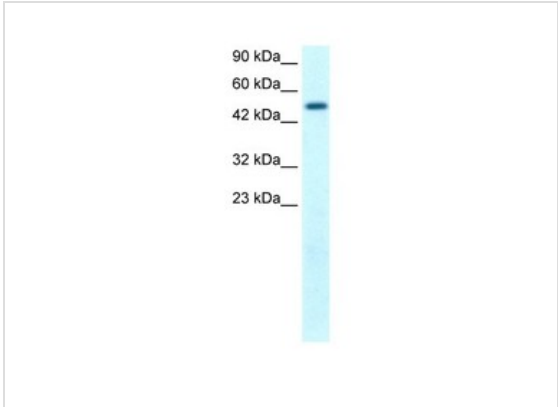
## Database Links

Entrez Gene	84922
Protein Accession	NP_116225

## Application



**Application**  
Antibody used in IHC on Human kidney at 4.0-8.0 ug/ml.



**Application**  
Antibody used in WB on Human Kidney at 1.25 ug/ml.

Positive Control	1) Cat. No. XBL-10408 - Fetal Kidney Tissue Lysate
Application Notes	FLJ14768 antibody can be used for detection of FLJ14768 by ELISA at 1:62500. FLJ14768 antibody can be used for detection of FLJ14768 by western blot at 1.25 µg/mL, and HRP conjugated secondary antibody should be diluted 1:50,000 - 100,000.:

## Additional Information

Form	Liquid
Storage Instructions	For short periods of storage (days) store at 4 °C. For longer periods of storage, store FLJ14768 antibody at -20 °C. As with any antibody avoid repeat freeze-thaw cycles.
Storage Buffer	IgG in phosphate buffered saline , pH 7.4, 150mM NaCl, 0.02% sodium azide and 50% glycerol.Store at -20 °C.Stable for 12 months from date of receipt
Note	The product is for research use only,not for use in diagnostic or therapeutic procedures.

OmnimAbs.com