



Catalog: OM638934

Scan to get more validated information



Filamin-A

Catalog: OM638934

☐ 100 µl

Product profile

Product name	Filamin-A
Antibody Type	Primary Antibodies
Product description	Caldesmon, Filamin 1, Nebulin and Villin are differentially expressed and regulated Actin binding proteins. Both muscular (CDh) and non-muscular (CDI) forms of Caldesmon have been identified and each has been shown to bind to Actin as well as to calmodulin and Myosin. CDh is expressed predominantly on thin filaments in smooth muscle, whereas CDI is widely expressed in non-muscle tissues and cells. Filamin 1, which is ubiquitously expressed and exists as a homodimer, functions to crosslink Actin to filaments. Nebulin is a large filamentous protein specific to muscle tissue that may function as a ruler for filament length. Several isoforms of Nebulin are produced by alternative exon usage. Villin is Ca ²⁺ -regulated and is the major structural component of the brush border of absorptive cells.
Immunogen	Recombinant protein.

Key Feature

Clonality	Polyclonal
Isotype	IgG
Host Species	Rabbit
Tested Applications	WB ,ICC ,IHC ,FC
Species Reactivity	Human Mouse
Concentration	1 mg/mL.

Target Information

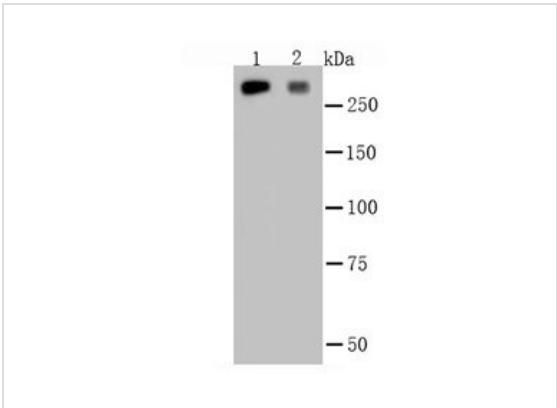
Alternative Names	ABP 280 antibody ABP-280 antibody Actin-binding protein 280 antibody Alpha filamin antibody Alpha-filamin antibody APBX antibody CSBS antibody CVD1 antibody Endothelial actin binding protein antibody Endothelial actin-binding protein antibody Filamin 1 antibody Filamin A alpha antibody Filamin A antibody Filamin-1 antibody Filamin-A antibody FLN antibody FLN-A antibody FLN1 antibody FLNA antibody FLNA_HUMAN antibody FMD antibody MNS antibody NHBP antibody Non muscle filamin antibody Non-muscle filamin antibody OPD antibody OPD1 antibody OPD2 antibody XLVD antibody XMVD antibody
-------------------	--

Molecular Weight(MW)	280 kDa
Cellular Localization	Cytoplasm, cytoskeleton.

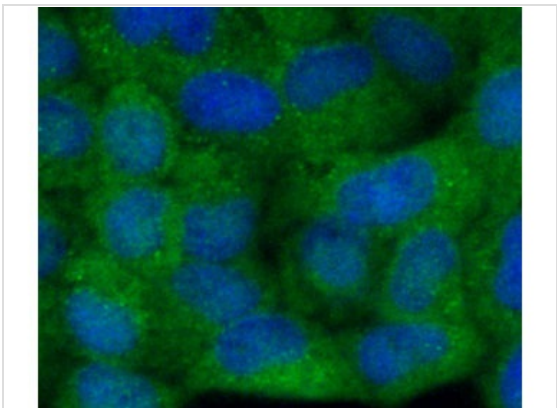
Database Links

SwissProt ID	P21333
	Q8BTM8

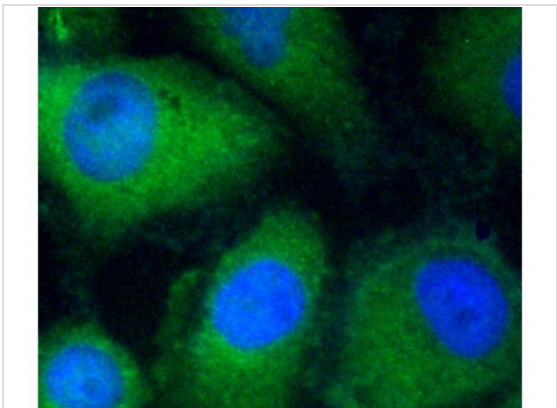
Application



Application
Fig1: Western blot analysis of Filamin-A on HeLa (1) and NIH-3T3 (2) cell lysates using anti-Filamin-A antibody at 1/5,000 dilution.

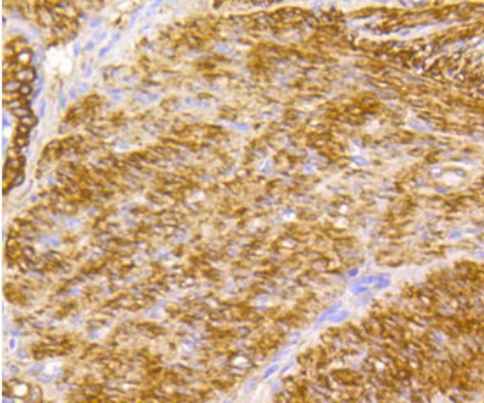
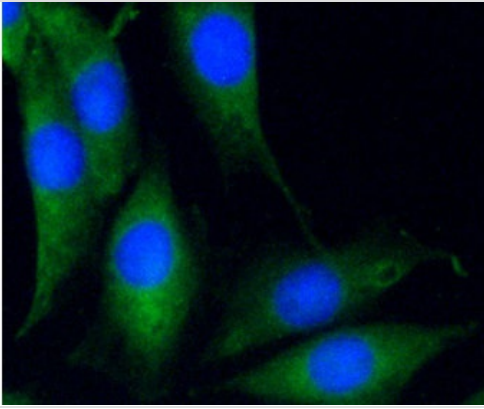


Application
Fig2: ICC staining Filamin-A in HeLa cells (green). The nuclear counter stain is DAPI (blue). Cells were fixed in paraformaldehyde, permeabilised with 0.25% Triton X100/PBS.



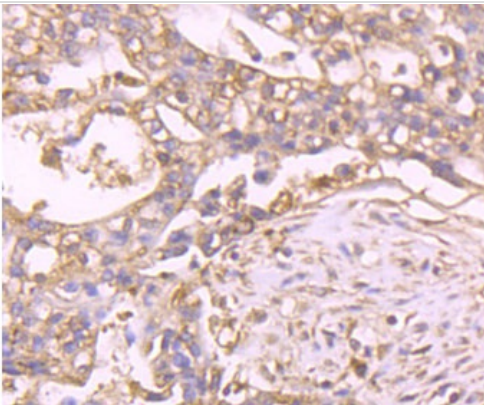
Application
Fig3: ICC staining Filamin-A in HUVEC cells (green). The nuclear counter stain is DAPI (blue). Cells were fixed in paraformaldehyde, permeabilised with 0.25% Triton X100/PBS.

Application
Fig4: ICC staining Filamin-A in MCF-7 cells (green). The nuclear counter stain is DAPI (blue). Cells were fixed in paraformaldehyde, permeabilised with 0.25% Triton X100/PBS.



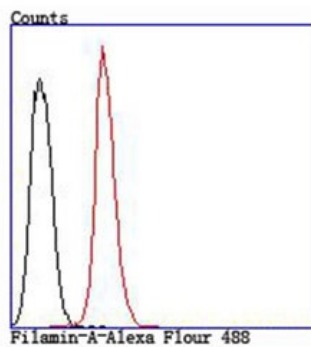
Application

Fig5: Immunohistochemical analysis of paraffin-embedded human uterus tissue using anti-Filamin-A antibody. Counter stained with hematoxylin.



Application

Fig6: Immunohistochemical analysis of paraffin-embedded human stomach cancer tissue using anti-Filamin-A antibody. Counter stained with hematoxylin.



Application

Fig7: Flow cytometric analysis of Hela cells with Filamin-A antibody at 1/100 dilution (red) compared with an unlabelled control (cells without incubation with primary antibody; black).

Positive Control

Hela, NIH-3T3, HUVEC, MCF-7, human uterus tissue, human stomach cancer tissue.

Application Notes

WB:1:500~1:2000

ICC:1:200~1:500

IHC:1:50~1:200

FC:1:200~1:500

Notes:Optimal dilutions/concentrations should be determined by the researcher.

Additional Information

Form	Liquid
Storage Instructions	Store at +4°C after thawing. Aliquot store at -20°C or -80°C. Avoid repeated freeze / thaw cycles.
Storage Buffer	1*TBS (pH7.4), 0.5%BSA, 50%Glycerol. Preservative: 0.05% Sodium Azide.
Note	The product is for research use only,not for use in diagnostic or therapeutic procedures.

OmnimAbs.com

order@Omnimabs.com
506 N. GARFIELD AVE #210 ALHAMBRA, CA 91801
This product is for research use only and is not approved for use in humans or in clinical diagnosis. Primary Antibodies are guaranteed for 1 year from date of receipt