



Catalog: OM279862

Scan to get more validated information



GLIS2 Antibody

Catalog: OM279862

☐ 100ug

Product profile

| | |
|---------------------|--|
| Product name | GLIS2 Antibody |
| Antibody Type | Primary Antibodies |
| Product description | Members of the Kruppel-like zinc finger protein family, such as GLIS2, function as activators and/or repressors of gene transcription. ¹ Kim, Y.S., et al., (2003) Nucleic Acids Res. 31 (19), 5513-5525. |
| Immunogen | Antibody produced in rabbits immunized with a synthetic peptide corresponding a region of human GLIS2. |

Key Feature

| | |
|---------------------|------------|
| Clonality | Polyclonal |
| Host Species | Rabbit |
| Tested Applications | ELISA ,WB |
| Species Reactivity | Human |
| Concentration | 1 mg/ml |
| Purification | Protein A |

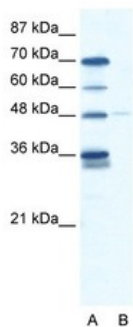
Target Information

| | |
|----------------------|-------------------|
| Gene Symbol | GLIS2 |
| Alternative Names | GLIS2, NKL, NPHP7 |
| Molecular Weight(MW) | 56 kDa |

Database Links

| | |
|-------------------|-----------|
| Entrez Gene | 84662 |
| Protein Accession | NP_115964 |

Application

**Application**

Antibody used in WB on Human HepG2 at 2.5 ug/ml.

Positive Control

1) Cat. No. 1211 - HepG2 Cell Lysate

Application Notes

GLIS2 antibody can be used for detection of GLIS2 by ELISA at 1:12500. GLIS2 antibody can be used for detection of GLIS2 by western blot at 2.5 µg/mL, and HRP conjugated secondary antibody should be diluted 1:50,000 - 100,000.:

Additional Information

Form

Liquid

Storage Instructions

For short periods of storage (days) store at 4 °C. For longer periods of storage, store GLIS2 antibody at -20 °C. As with any antibody avoid repeat freeze-thaw cycles.

Storage Buffer

IgG in phosphate buffered saline , pH 7.4, 150mM NaCl, 0.02% sodium azide and 50% glycerol.Store at -20 °C.Stable for 12 months from date of receipt

Note

The product is for research use only,not for use in diagnostic or therapeutic procedures.

OmnimAbs.com

order@Omnimabs.com

506 N. GARFIELD AVE #210 ALHAMBRA, CA 91801

This product is for research use only and is not approved for use in humans or in clinical diagnosis. Primary Antibodies are guaranteed for 1 year from date of receipt