



Catalog: OM279863

Scan to get more validated information



GLIS2 Antibody

Catalog: OM279863

☐ 100ug

Product profile

Product name	GLIS2 Antibody
Antibody Type	Primary Antibodies
Product description	GLIS2, also known as neuronal Krueppel-like, is a 524 amino acid protein that belongs to the GLI C2H2-type zinc-finger protein family (1). GLIS2 can act either as a transcription repressor or as a transcription activator and may be involved in neuron differentiation (1,2). GLIS2 is expressed at high levels in kidney and at low levels in heart, lung and placenta. Mutations of GLIS2 have been suggested to be associated with development of progressive chronic kidney disease with characteristics resembling nephronophthisis (3,4). 1) Vasanth S, ZeRuth G, Kang HS, et al. Identification of nuclear localization, DNA binding, and transactivating mechanisms of Kruppel-like zinc finger protein Gli-similar 2 (Glis2). J. Biol. Chem. 2011; 286:4749-59.
Immunogen	GLIS2 antibody was raised against an 18 amino acid peptide near the center of human GLIS2. The immunogen is located within amino acids 260 - 310 of GLIS2.

Key Feature

Clonality	Polyclonal
Isotype	IgG
Host Species	Rabbit
Tested Applications	ELISA ,IHC-P ,WB
Species Reactivity	Human Mouse Rat
Concentration	1 mg/ml
Purification	Affinity purified

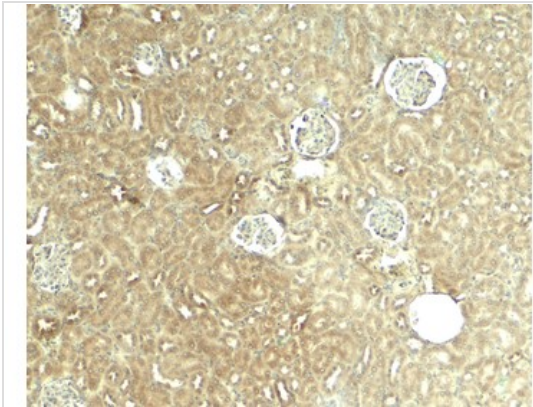
Target Information

Gene Symbol	GLIS2
Alternative Names	GLIS family zinc finger 2, GLI-similar 2, neuronal krueppel-like protein, NKL, NPHP7
Molecular Weight(MW)	Predicted: 58 kDa Observed: 60 kDa
Tissue Specificity	GLIS2 antibody is human, mouse and rat reactive.

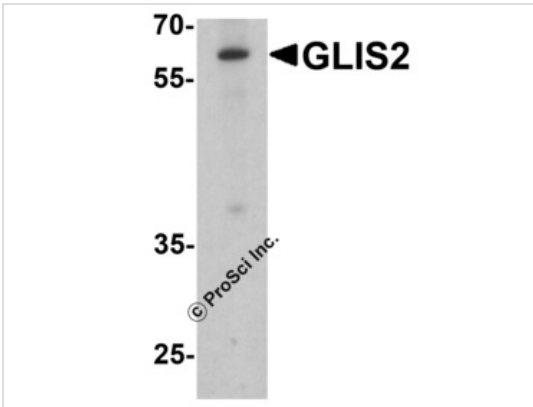
Database Links

Entrez Gene	84662
Protein Accession	NP_115964

Application



Application
Immunohistochemistry of GLIS2 in mouse kidney tissue with GLIS2 antibody at 5 µg/ml.



Application
Western blot analysis of GLIS2 in K562 cell lysate with GLIS2 antibody at 1 µg/ml.

Positive Control	1) Cat. No. 1204 - K562 Cell Lysate
Application Notes	GLIS2 antibody can be used for detection of GLIS2 by Western blot at 1 - 2 µg/ml. Antibody can also be used for immunohistochemistry starting at 5 µg/mL.

Additional Information

Form	Liquid
Storage Instructions	GLIS2 antibody can be stored at 4 °C for three months and -20 °C, stable for up to one year.
Storage Buffer	GLIS2 antibody is supplied in PBS containing 0.02% sodium azide.
Note	The product is for research use only, not for use in diagnostic or therapeutic procedures.

OmnimAbs.com

This product is for research use only and is not approved for use in humans or in clinical diagnosis. Primary Antibodies are guaranteed for 1 year from date of receipt

