



Catalog: OM280618

Scan to get more validated information



HAT-tag Antibody

Catalog: OM280618

☐ 100ug

Product profile

Product name	HAT-tag Antibody
Antibody Type	Tags Antibodies
Product description	Epitope tags provide a method to localize gene products in a variety of cell types, study the topology of proteins and protein complexes, identify associated proteins, and characterize newly identified, low abundance or poorly immunogenic proteins when protein specific antibodies are not available. HAT-tag is one of the more popular epitope tags for expressed recombinant proteins.
Immunogen	HAT-tag antibody was raised against a synthetic peptide containing KDHLIHNVHKEFHAAHANK.

Key Feature

Clonality	Polyclonal
Isotype	IgG
Host Species	Rabbit
Tested Applications	ELISA ,IP ,WB
Species Reactivity	Tag
Concentration	1 mg/ml
Purification	Affinity purified

Target Information

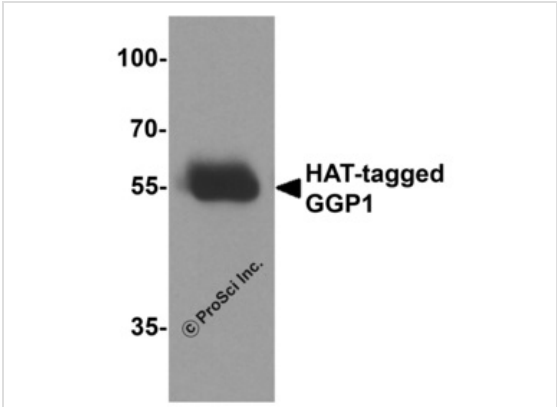
Gene Symbol	N/A
Alternative Names	Hat-tag, Hat
Molecular Weight(MW)	N/A
Tissue Specificity	HAT-tag antibody will detect amino- or carboxy-terminal HAT-tagged recombinant proteins.

Database Links

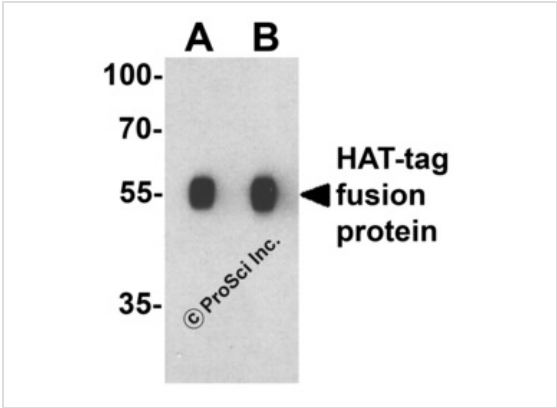
Entrez Gene	N/A
-------------	-----

Entrez Gene	N/A
Protein Accession	N/A

Application



Application
 Western blot analysis of 20ng of HAT-tagged recombinant GGP1 protein using 1 µg of HAT antibody to immunoprecipitate and 1 µg/ml anti-GGP1 antibody to detect.



Application
 Western blot analysis of a HAT-tag-containing recombinant protein with HAT-tag antibody at (A) 0.125 and (B) 0.25 µg/ml.

Positive Control	1) N/A
Application Notes	HAT-tag antibody can be used for detection of HAT-tag epitope-containing recombinant proteins by Western blot at 0.5 - 1 µ/ml.:

Additional Information

Form	Liquid
Storage Instructions	HAT-tag antibody can be stored at 4 °C for three months and -20°C, stable for up to one year.
Storage Buffer	HAT-tag antibody is supplied in PBS containing 0.02% sodium azide.
Note	The product is for research use only,not for use in diagnostic or therapeutic procedures.

OmnimAbs.com