



Catalog: OM156743

Scan to get more validated information



HA-probe Antibody (Y-11) PCPC5

Catalog: OM156743

☐ 100ul

Product profile

Product name	HA-probe Antibody (Y-11) PCPC5
Antibody Type	Primary Antibodies
Modification Notes	Plasmid vectors for the expression of coding regions of eukaryotic genes in bacterial, insect and mammalian hosts are in common usage; such expression vectors are frequently used to encode hybrid fusion proteins consisting of a eukaryotic target protein and a specialized region designed to aid in the purification and visualization of the target protein. For example, the pCDM8 expression vector and derivatives thereof encode fusions between the target protein and an 11 amino acid peptide derived from the influenza protein hemagglutinin (HA). The HA epitope tag is useful in Western blotting and immunohistochemical localization of expressed fusion proteins when examined with antibodies raised specifically against the HA-epitope tag.

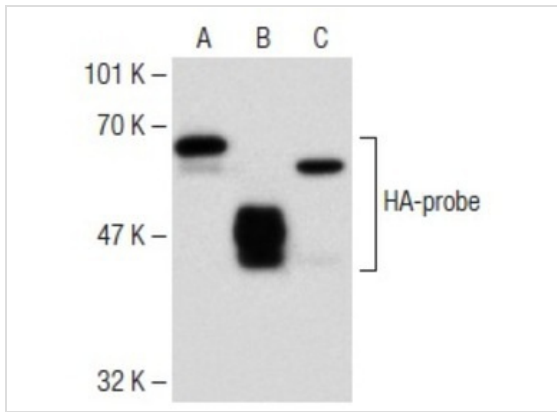
Key Feature

Clonality	Polyclonal
Isotype	IgG
Host Species	Rabbit
Tested Applications	WB ,IP ,IF ,FC ,ELISA ,ChIP
Species Reactivity	Human Mouse Rat
Concentration	1mg/ml
Purification	Affinity purified

Target Information

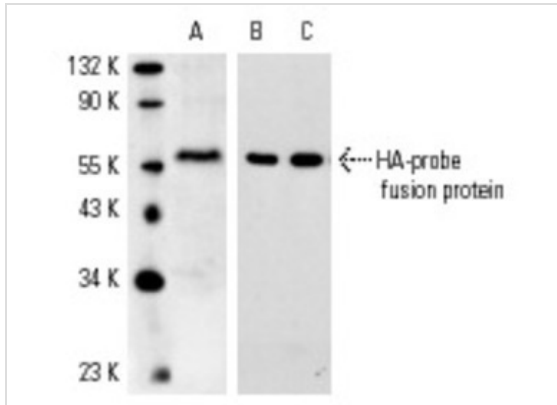
Alternative Names	epitope mapping within an internal region of the influenza hemagglutinin (HA) protein
Tissue Specificity	epitope mapping within an internal region of the influenza hemagglutinin (HA) protein

Application



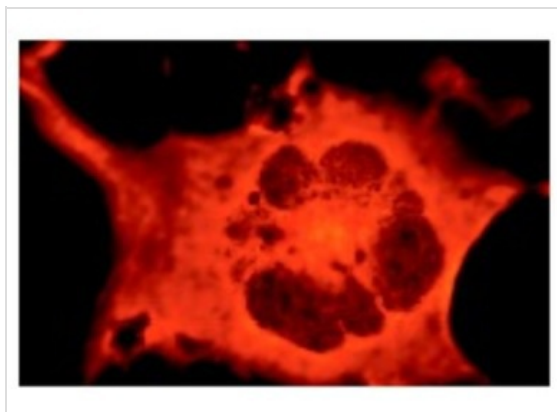
Application

Western blot analysis of HA-probe expression in HA tagged β 2B Tubulin (A), HA tagged 3pk (B) and HA tagged PTP 1B (C) transfected lysates.



Application

Antibodies tested include HA-probe (Y-11)-G: (A) and HA-probe (Y-11): (B,C).



Application

Immunofluorescence staining of methanol-fixed COS cells transfected with HA fusion protein showing cytoplasmic staining.

Application Notes

recommended for detection of proteins containing the HA tag by WB, IP, IF, FCM and ELISA:

Additional Information

Form

Liquid

Storage Instructions

For short-term storage, store at 4° C. For long-term storage, aliquot and store at -20°C or below. Avoid multiple freeze-thaw cycles.

Storage Buffer

phosphate buffered saline , pH 7.4, 150mM NaCl, 0.02% sodium azide and 50% glycerol.

Note

The product is for research use only, not for use in diagnostic or therapeutic procedures.

OmnimAbs.com

order@Omnimabs.com

506 N. GARFIELD AVE #210 ALHAMBRA, CA 91801

This product is for research use only and is not approved for use in humans or in clinical diagnosis. Primary Antibodies are guaranteed for 1

year from date of receipt

