



Catalog: OM255791

Scan to get more validated information



HA tag antibody

Catalog: OM255791

☐ 100ug

Product profile

Product name	HA tag antibody
Antibody Type	Tags Antibodies
Product description	Rabbit polyclonal to HA tagThe HA tag is derived from an epitope of the influenza hemagglutinin protein, which has been extensively used as a general epitope tag in expression vectors.
Immunogen	YPYDVPDYA (influenza hemagglutinin-HA-epitope) conjugated to KLH

Key Feature

Clonality	Polyclonal
Isotype	IgG
Host Species	Rabbit
Tested Applications	ELISA ,ICC/IF ,IP ,WB
Species Reactivity	Human
Concentration	1 mg/ml (Please refer to the vial label for the specific concentration)

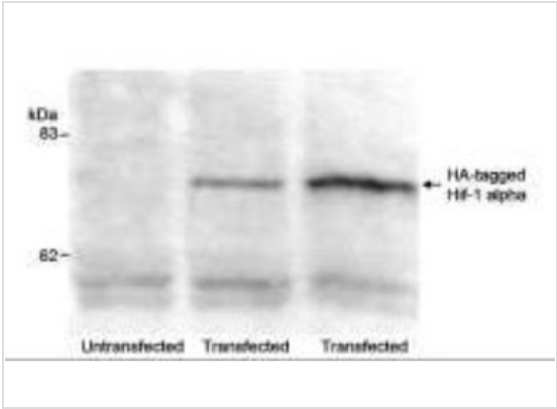
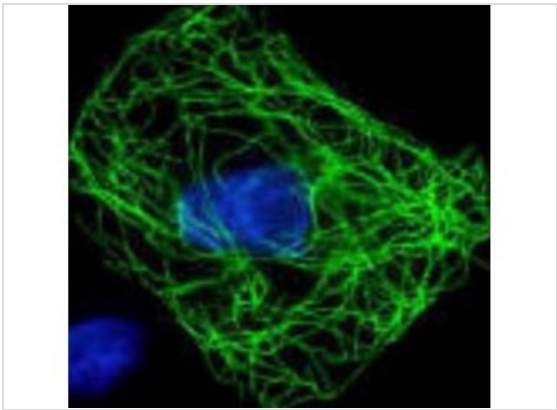
Target Information

Gene Synonyms	HA epitope tag, HA tag, HA
Target	HA tag
Tissue Specificity	ELISA: The anti HA diluted 1:70,000 gave an O.D.=1.0 in a 15 minute reaction against peptide conjugated with a different carrier than used for anti peptide purification. HRP conjugated Goat anti rabbit IgG was used and TMB was the substrate.
Cellular Localization	various

Application

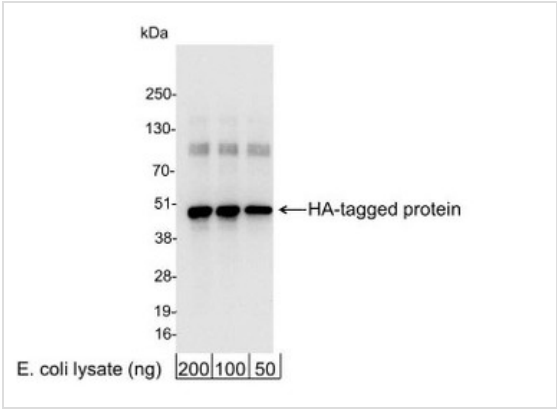
Application

Immunocytochemistry/Immunofluorescence: HA Epitope Tag Antibody - CHO cell



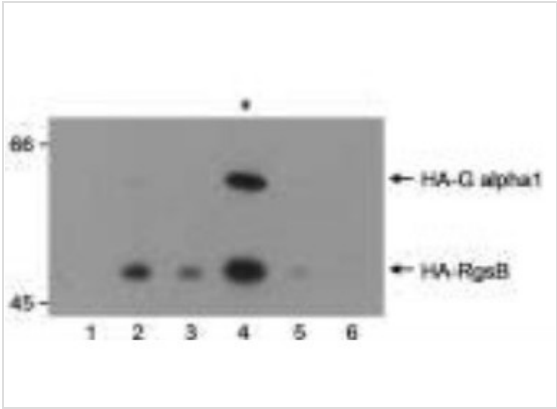
Application

Immunoprecipitation: HA Epitope Tag Antibody - Immunoprecipitation: HA Epitope Tag Antibody- Samples: Lysate(150 mcg) from cells that were untransfected or stably transfected with a construct encoding an HA-tagged HIF 1-alpha truncation mutant. Affinity purified rabbit anti-HA used at 3mcg -150mcg lysate. Immunoprecipitated HA-HIF-1 alpha was detected using a monoclonal antibody to HIF-1 alpha.



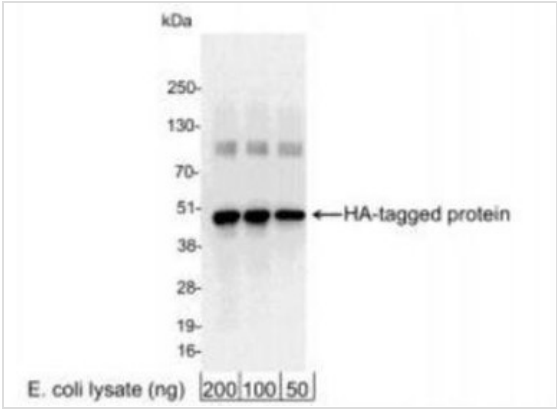
Application

Western Blot: HA Epitope Tag Antibody - 200, 100, or 50 ng of E. coli whole cell lysate expressing a multi-tag fusion protein. Antibody used at 0.04 ug/ml (1:25,000).



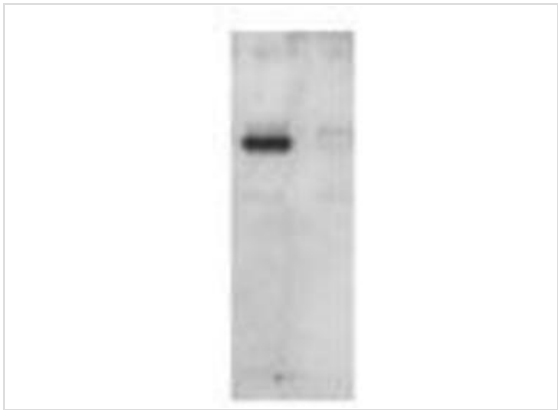
Application

Western Blot: HA Epitope Tag Antibody - Western Blot: HA Epitope Tag Antibody- Samples: Extracts from S. Cerevisiae co-transformed with plasmids expressing HA Tag G alpha and HA tagged RGS domain of RGS beta were screened by Western Blot to identify clones expressing both proteins. Antibody: affinity purified rabbit anti-HA used at 0.1 mcg/ml



Application

Western Blot: HA Epitope Tag Antibody - Detection of HA-tagged Protein by Western Blot. Samples: 200, 100, or 50 ng of E. coli whole cell lysate expressing a multitag fusion protein. Affinity purified rabbit anti-HA antibody used for WB at 0.04 ug/ml (1:25,000).



Application

Western blot detection of 1 ug of recombinant E. coli protein (containing 11 different epitopes) using Lane 1 contains the antibody (1:1000) alone, lane 2 contains the antibody and neutralizing peptide.

Application Notes

Suggested starting dilutions are as follows: WB: 1:1000-1:10000, ICC/IF: 1:100-1:1000, IP: 1:100-1:500, ELISA. Not yet tested in other applications. Optimal working dilutions should be determined experimentally by the end user.:

Additional Information

Form	Liquid
Storage Instructions	Keep as concentrated solution. Aliquot and store at -20°C or below. Avoid multiple freeze-thaw cycles.
Storage Buffer	1XPBS, 20% Glycerol (pH7). 0.025% ProClin 300 was added as a preservative.
Note	The product is for research use only,not for use in diagnostic or therapeutic procedures.

OmnimAbs.com

order@Omnimabs.com
506 N. GARFIELD AVE #210 ALHAMBRA, CA 91801
This product is for research use only and is not approved for use in humans or in clinical diagnosis. Primary Antibodies are guaranteed for 1 year from date of receipt