



**Catalog: OM255818**

Scan to get more validated information



# HA tag antibody

Catalog: OM255818

☐ 100ug

## Product profile

Product name	HA tag antibody
Antibody Type	Tags Antibodies
Product description	Mouse Monoclonal antibody [GT4810] to HA tag

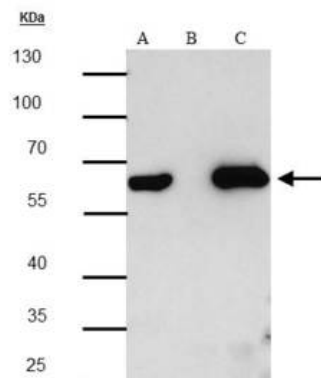
## Key Feature

Clonality	Monoclonal
Isotype	IgG2a
Clone Number	GT4810
Host Species	Mouse
Tested Applications	ICC/IF ,IP ,WB
Concentration	1 mg/ml (Please refer to the vial label for the specific concentration)
Purification	Affinity purified

## Target Information

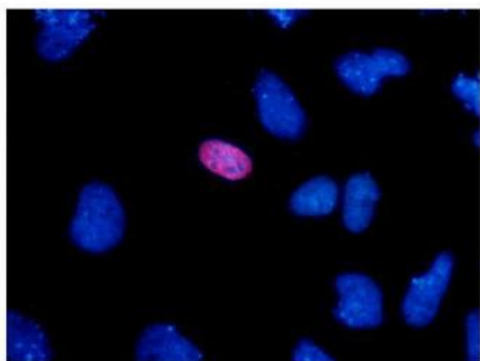
Gene Synonyms	HA tag antibody, HA antibody, HA epitope tag antibody
---------------	---

## Application



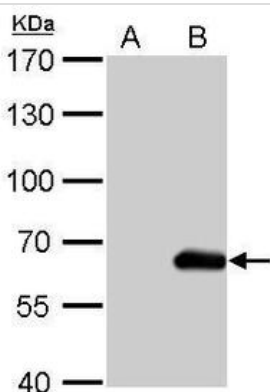
#### Application

HA tag antibody [GT4810] immunoprecipitates HA tagged protein in IP experiments. IP Sample: 293T whole cell lysate/extract A : 20 µg whole cell lysate/extract of HA tagged protein expressing 293T cells B : Control with 2.5 µg of pre-immune mouse IgG C : Immunoprecipitation of HA tagged protein by 2.5 µg of HA tag antibody 10% SDS-PAGE The immunoprecipitated HA tagged protein was detected by HA tag antibody [GT4810] diluted at 1 : 3000. EasyBlot anti-mouse IgG (HRP) was used as a secondary reagent.



#### Application

HA tag antibody [GT4810] detects HA-recombinant protein by immunofluorescent analysis. Sample: HA tag transfected HeLa cells were fixed in 4% paraformaldehyde at RT for 15 min. Red: HA-recombinant protein stained by HA tag antibody [GT4810] diluted at 1:500. Blue: Hoechst 33342 staining.



#### Application

HA tag antibody [GT4810] detects HA tag protein by western blot analysis. A. 30 µg HeLa whole cell lysate/extract B. 30 µg whole cell lysate/extract of HA tagged protein expressing HeLa cells 5% SDS-PAGE HA tag antibody [GT4810] dilution: 1:5000 The HRP-conjugated anti-mouse IgG antibody was used to detect the primary antibody.

**Positive Control** HA-tagged protein expressing HeLa cells

**Application Notes** \*Optimal dilutions/concentrations should be determined by the researcher. :

## Additional Information

<b>Form</b>	Liquid
<b>Storage Instructions</b>	Keep as concentrated solution. Aliquot and store at -20°C or below. Avoid multiple freeze-thaw cycles.
<b>Storage Buffer</b>	PBS
<b>Note</b>	The product is for research use only, not for use in diagnostic or therapeutic procedures.

# OmnimAbs.com

This product is for research use only and is not approved for use in humans or in clinical diagnosis. Primary Antibodies are guaranteed for 1 year from date of receipt

