



Catalog: OM281440

Scan to get more validated information



# HSPB1 Antibody

Catalog: OM281440

☐ 100ug

## Product profile

Product name	HSPB1 Antibody
Antibody Type	Primary Antibodies
Product description	<p>In response to adverse changes in their environment, cells from many organisms increase the expression of a class of proteins referred to as heat shock or stress proteins. HSBP1 exhibits rapid increased phosphorylation in response to various mitogens, tumor promoters (e.g. phorbol esters) and calcium ionophores, and high levels are associated with carcinoma of the breast and with endometrial adenocarcinomas. Heat shock of HeLa cell cultures, or treatment with arsenite, phorbol ester, or tumor necrosis factor, causes a rapid phosphorylation of preexisting HSBP1, with Ser82 as the major site and Ser78 the minor site of phosphorylation. HSBP1 may exert phosphorylation-activated functions linked with growth signaling pathways in unstressed cells. A homeostatic function at this level could protect cells from adverse effects of signal transduction systems which may be activated inappropriately during stress.<sup>1</sup>) Wano, C., et al., Exp. Cell Res. 298(2):584-592 (2004).</p>
Immunogen	<p>This HSPB1 antibody is generated from rabbits immunized with a KLH conjugated synthetic peptide between 60-89 amino acids from human HSPB1.</p>

## Key Feature

Clonality	Polyclonal
Isotype	Ig
Host Species	Rabbit
Tested Applications	IHC-P ,WB
Species Reactivity	Human
Concentration	1 mg/ml
Purification	Affinity purified

## Target Information

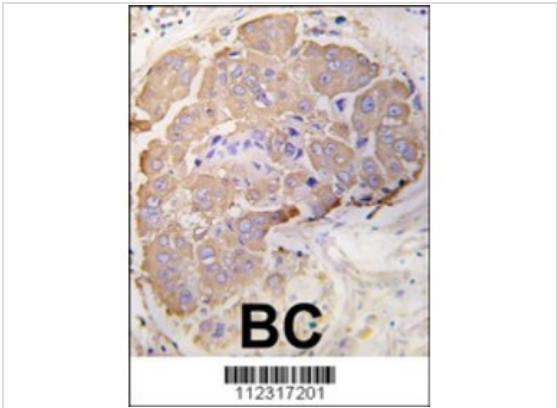
Gene Symbol	HSPB1
-------------	-------

<b>Alternative Names</b>	Heat shock protein beta-1, HspB1, 28 kDa heat shock protein, Estrogen-regulated 24 kDa protein, Heat shock 27 kDa protein, HSP 27, Stress-responsive protein 27, SRP27, HSPB1, HSP27, HSP28
<b>Molecular Weight(MW)</b>	23 kDa

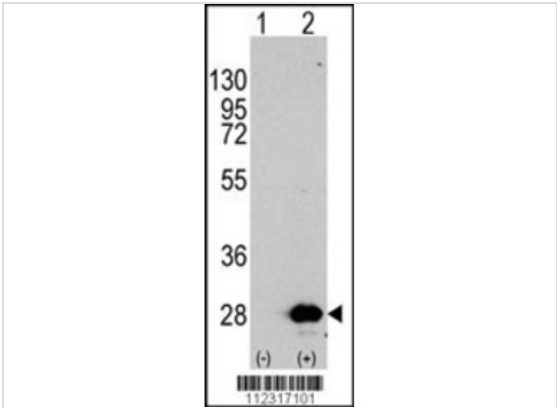
Database Links

<b>Entrez Gene</b>	3315
<b>Protein Accession</b>	P04792

Application



**Application**  
 Formalin-fixed and paraffin-embedded human breast carcinoma tissue reacted with HSPB1 Antibody (S82) , which was peroxidase-conjugated to the secondary antibody, followed by DAB staining.



**Application**  
 Western blot analysis of HSPB1 using rabbit polyclonal HSPB1 Antibody (S82) using 293 cell lysates (2 ug/lane) either nontransfected (Lane 1) or transiently transfected with the HSPB1 gene (Lane 2).

<b>Application Notes</b>	For WB starting dilution is: 1:1000 For IHC-P starting dilution is: 1:10~50:
--------------------------	--

Additional Information

<b>Form</b>	Liquid
<b>Storage Instructions</b>	Store at 4°C for three months and -20°C, stable for up to one year. As with all antibodies care should be taken to avoid repeated freeze thaw cycles. Antibodies should not be exposed to prolonged high temperatures.
<b>Storage Buffer</b>	Supplied in PBS with 0.09% (W/V) sodium azide.
<b>Note</b>	The product is for research use only,not for use in diagnostic or therapeutic procedures.

---

order@Omnimabs.com

506 N. GARFIELD AVE #210 ALHAMBRA, CA 91801

This product is for research use only and is not approved for use in humans or in clinical diagnosis. Primary Antibodies are guaranteed for 1 year from date of receipt

---