



Catalog: OM281801

Scan to get more validated information



IKK- γ (phospho Ser376) Antibody

Catalog: OM281801

☐ 100ug

Product profile

Product name	IKK- γ (phospho Ser376) Antibody
Antibody Type	Primary Antibodies
Product description	Familial incontinentia pigmenti (IP) is a genodermatosis that segregates as an X-linked dominant disorder and is usually lethal prenatally in males. In affected females it causes highly variable abnormalities of the skin, hair, nails, teeth, eyes, and central nervous system. The prominent skin signs occur in 4 classic cutaneous stages: perinatal inflammatory vesicles, verrucous patches, a distinctive pattern of hyperpigmentation, and dermal scarring. Cells expressing the mutated X chromosome are eliminated selectively around the time of birth, so females with IP exhibit extremely skewed X-inactivation. ¹) Li Y., Proc. Natl. Acad. Sci. U.S.A. 96:1042-1047(1999).
Immunogen	IKK- γ (phospho Ser376) antibody was raised against a peptide sequence around phosphorylation site of Serine 376 (Y-L-S (p)-S-P) derived from Human IKK- γ .

Key Feature

Clonality	Polyclonal
Isotype	IgG
Host Species	Rabbit
Tested Applications	IHC
Species Reactivity	Human
Concentration	1 mg/ml
Purification	Affinity purified

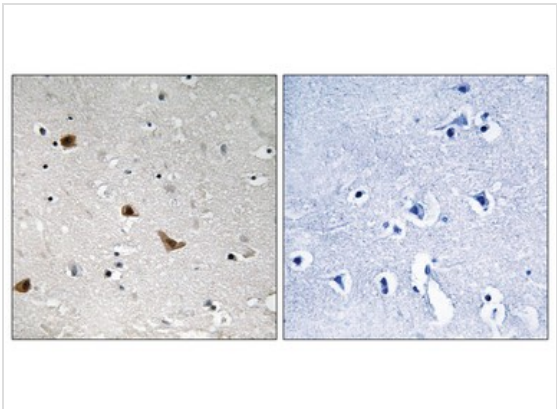
Target Information

Gene Symbol	IKBKG
Alternative Names	FIP3, IKBKG, IKKAP1, IKKG, NF-kappaB
Molecular Weight(MW)	48 kDa
Tissue Specificity	The antibody detects endogenous levels of IKK- γ only when phosphorylated at serine 376.

Database Links

Entrez Gene	8517
Protein Accession	NP_001093327.1

Application



Application
Immunohistochemical analysis of paraffin-embedded human brain tissue using IKK-γ (Phospho-Ser376) antibody (left) or the same antibody preincubated with blocking peptide (right).

Application Notes	IHC:1:50~1:200
Notes:	Optimal dilutions/concentrations should be determined by the researcher.

Additional Information

Form	Liquid
Storage Instructions	Store antibody at -20°C for up to one year.
Storage Buffer	Antibody supplied in phosphate buffered saline (without Mg2+ and Ca2+), pH 7.4, 150mM NaCl, 0.02% sodium azide and 50% glycerol.
Note	The product is for research use only,not for use in diagnostic or therapeutic procedures.

OmnimAbs.com

order@Omnimabs.com
506 N. GARFIELD AVE #210 ALHAMBRA, CA 91801
This product is for research use only and is not approved for use in humans or in clinical diagnosis. Primary Antibodies are guaranteed for 1 year from date of receipt

