



Catalog: OM154525

Scan to get more validated information



# IL-10R $\alpha$ Antibody (C-20) PE

Catalog: OM154525

☐ 100ul

## Product profile

Product name	IL-10R $\alpha$ Antibody (C-20) PE
Antibody Type	Primary Antibodies
Modification Notes	<p>The IL-10 receptor, IL-10R, is a member of the class II subgroup of the cytokine receptor family and exhibits structural similarity to the interferon receptor. IL-10R is expressed in B cells and T helper cells, as well as in LPS-induced mouse fibroblasts. Overall, mouse IL-10R and human IL-10R share 60% sequence identity at the protein level. Stimulation with IL-10 leads to phosphorylation of JAK1 and Tyk 2 tyrosine kinases. The activated kinases phosphorylate the two tyrosine residues (Tyr 446 and Tyr 496) in the cytoplasmic domain of IL-10R<math>\alpha</math>. The phosphorylation of these two residues are required for proper function of IL-10R and activation of IL-10E1 signaling. IL-10R<math>\beta</math> is ubiquitously expressed and, in addition to forming the IL-10 heterodimeric receptor, it forms a heterodimeric receptor with an IL-22R subunit and an IL-28R subunit. IL-10R is constitutively expressed on human natural killer (NK) cells and the direct binding of IL-10 potentiates cytokine production by human NK cells.</p>

## Key Feature

Clonality	Polyclonal
Isotype	IgG
Host Species	Rabbit
Tested Applications	WB ,IP ,IF ,FC ,ELISA
Species Reactivity	Human Mouse Rat
Concentration	1mg/ml
Purification	Affinity purified

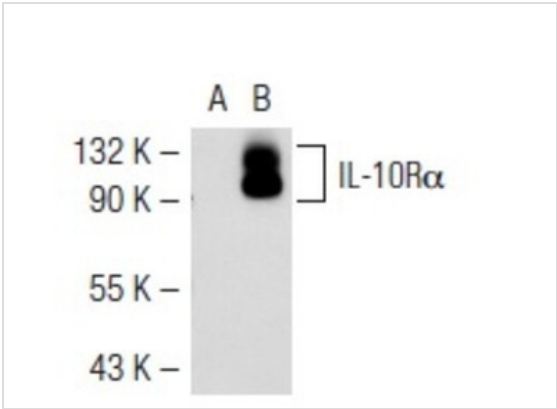
## Target Information

Alternative Names	epitope mapping at the C-terminus of IL-10R $\alpha$ of human origin
Tissue Specificity	epitope mapping at the C-terminus of IL-10R $\alpha$ of human origin

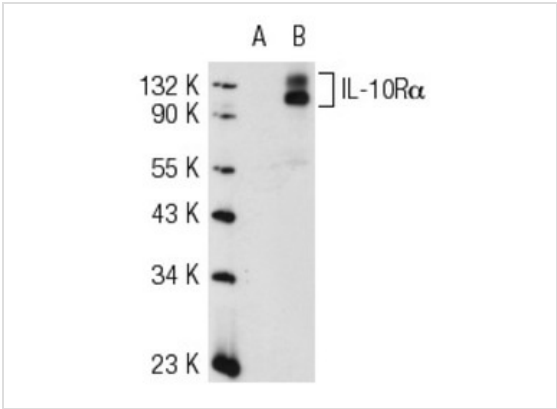
Database Links

Entrez Gene 3587

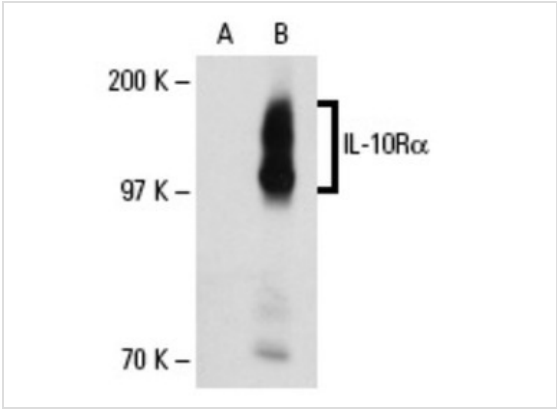
Application



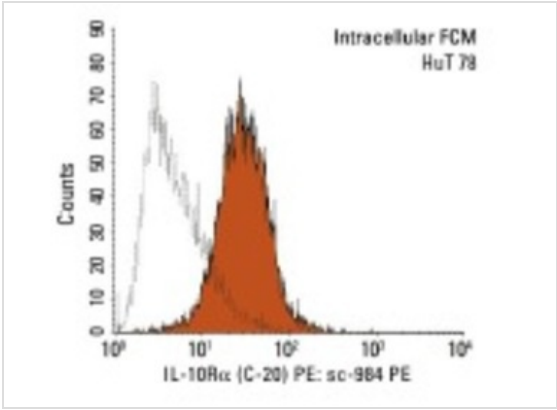
**Application**  
Western blot analysis of IL-10Rα expression in non-transfected: (A) and human IL-10Rα transfected: (B) 293 whole cell lysates.



**Application**  
Western blot analysis of IL-10Rα expression in non-transfected: (A) and human IL-10Rα transfected: (B) 293T whole cell lysates.

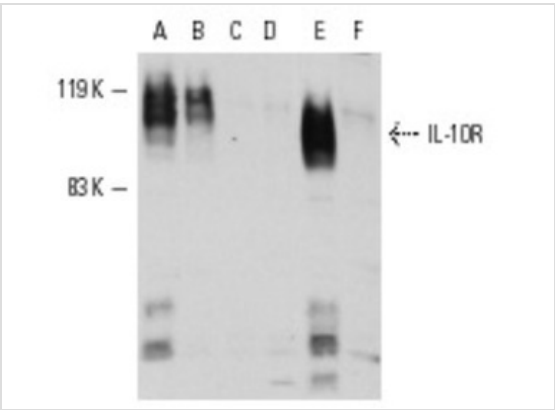


**Application**  
Western blot analysis of IL-10Rα expression in non-transfected: (A) and human IL-10Rα transfected: (B) CHO whole cell lysates.



**Application**  
Intracellular FCM analysis of fixed and permeabilized HuT 78 cells. Black line histogram represents the isotype control, normal rabbit IgG: .

**Application**  
Western blot analysis of IL-10Rα expression in Ramos (A), NAMALWA (B), CCRF-HSB-2 (C), MOLT-4 (D), HuT 78 (E) and Jurkat (F) whole cell lysates.



**Application Notes** recommended for detection of IL-10Rα of human and, to a lesser extent, mouse and rat origin by WB, IP, IF, FCM and ELISA; also reactive with additional species, including bovine and porcine:

Additional Information

Form	Liquid
Storage Instructions	For short-term storage, store at 4° C. For long-term storage, aliquot and store at -20°C or below. Avoid multiple freeze-thaw cycles.
Storage Buffer	phosphate buffered saline , pH 7.4, 150mM NaCl, 0.02% sodium azide and 50% glycerol.
Note	The product is for research use only,not for use in diagnostic or therapeutic procedures.

OmnimAbs.com

order@Omnimabs.com  
506 N. GARFIELD AVE #210 ALHAMBRA, CA 91801  
This product is for research use only and is not approved for use in humans or in clinical diagnosis. Primary Antibodies are guaranteed for 1 year from date of receipt