



Catalog: OM164227

Scan to get more validated information



IL-8RB Antibody (K-19) PE

Catalog: OM164227

☐ 100ul

Product profile

Product name	IL-8RB Antibody (K-19) PE
Antibody Type	Primary Antibodies
Modification Notes	IL-8 has been shown to function as a potent neutrophil chemostatic and activating peptide and is an important mediator of inflammatory diseases. Two distinct human IL-8 receptors, designated IL-8RA and IL-8RB, have been characterized. Both are expressed at a high level on neutrophils, and to a lesser extent on monocytes and myeloid cell lines. In addition, the IL-8RA subunit is expressed in T cells such as the Jurkat cell line. Both IL-8Rs are members of the seven transmembrane domain rhodopsin superfamily of receptors and as such, couple G proteins for signal transduction. The two receptors share 77% amino acid identity. IL-8RA exhibits high affinity binding for IL-8 and low affinity MGSA binding, whereas IL-8RB has high affinity binding for both IL-8 and MGSA.

Key Feature

Clonality	Polyclonal
Isotype	IgG
Host Species	Rabbit
Tested Applications	WB ,IP ,IF ,FC ,ELISA
Species Reactivity	Human Mouse Rat
Concentration	1mg/ml
Purification	Affinity purified

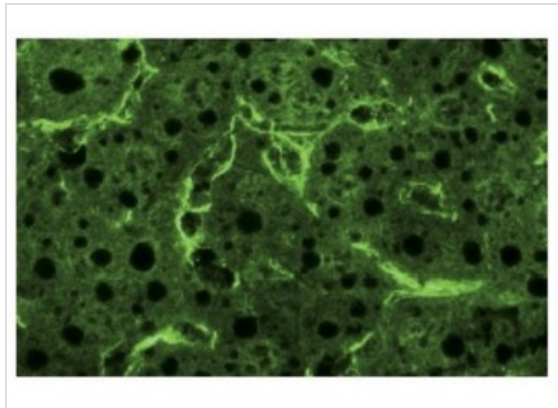
Target Information

Alternative Names	epitope mapping at the C-terminus of IL-8RB of mouse origin
Tissue Specificity	epitope mapping at the C-terminus of IL-8RB of mouse origin

Database Links

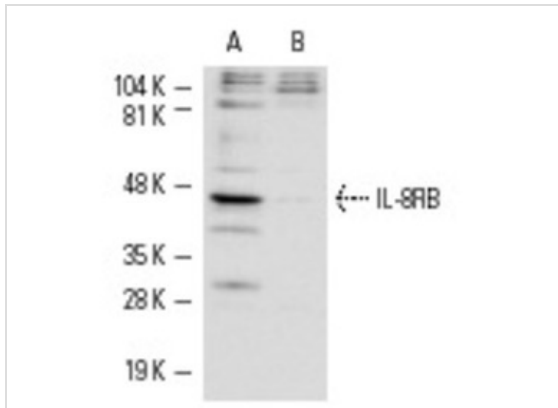
Entrez Gene	3579
-------------	------

Application



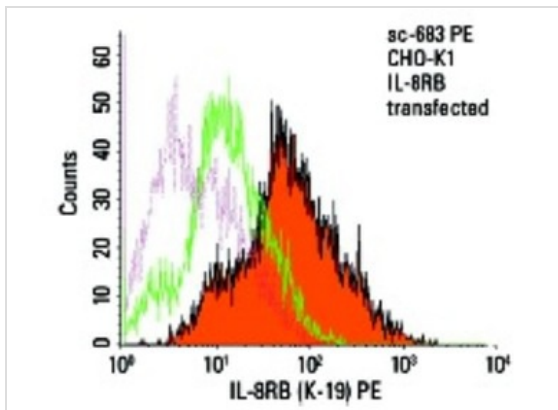
Application

Immunofluorescence staining of normal mouse liver frozen section showing membrane and cytoplasmic staining.



Application

Western blot analysis of IL-8RB expression in whole cell lysates prepared from CHO-K1 cells transfected with IL-8RB (A) and non-transfected CHO-K1 cells (B).



Application

Intracellular FCM analysis of fixed and permeabilized non-transfected (green line histogram) and IL-8RB transfected (solid orange histogram) CHO-K1 cells. Dotted pink histogram represents the isotype control, normal rabbit IgG: .

Application Notes

recommended for detection of IL-8RB of mouse, rat and, to a lesser extent, human origin by WB, I
P, IF, FCM and ELISA:

Additional Information

Form	Liquid
Storage Instructions	For short-term storage, store at 4° C. For long-term storage, aliquot and store at -20°C or below. Avoid multiple freeze-thaw cycles.
Storage Buffer	phosphate buffered saline , pH 7.4, 150mM NaCl, 0.02% sodium azide and 50% glycerol.
Note	The product is for research use only,not for use in diagnostic or therapeutic procedures.

OmnimAbs.com

order@Omnimabs.com
506 N. GARFIELD AVE #210 ALHAMBRA, CA 91801
This product is for research use only and is not approved for use in humans or in clinical diagnosis. Primary Antibodies are guaranteed for 1 year from date of receipt
