



**Catalog: OM282194**

Scan to get more validated information



# INSM2 Antibody

Catalog: OM282194

☐ 100ug

## Product profile

Product name	INSM2 Antibody
Antibody Type	Primary Antibodies
Product description	The function of INSM2 remains unknown.1) Ota, T., (2004) Nat. Genet. 36 (1), 40-45.
Immunogen	Antibody produced in rabbits immunized with a synthetic peptide corresponding a region of human INSM2 .

## Key Feature

Clonality	Polyclonal
Host Species	Rabbit
Tested Applications	ELISA ,WB
Species Reactivity	Human
Concentration	1 mg/ml
Purification	Protein A

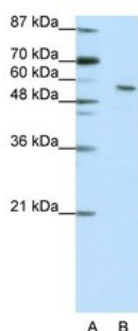
## Target Information

Gene Symbol	INSM2
Alternative Names	INSM2, IA6, IA-6, mlt 1
Molecular Weight(MW)	59 kDa

## Database Links

Entrez Gene	84684
Protein Accession	NP_115983

## Application



#### Application

Antibody used in WB on Human Jurkat 2.5 ug/ml.

#### Positive Control

1) Cat. No. 1205 - Jurkat Cell Lysate

#### Application Notes

INSM2 antibody can be used for detection of INSM2 by ELISA at 1:62500. INSM2 antibody can be used for detection of INSM2 by western blot at 2.5 µg/mL, and HRP conjugated secondary antibody should be diluted 1:50,000 - 100,000.:

## Additional Information

#### Form

Liquid

#### Storage Instructions

For short periods of storage (days) store at 4 °C. For longer periods of storage, store INSM2 antibody at -20 °C. As with any antibody avoid repeat freeze-thaw cycles.

#### Storage Buffer

IgG in phosphate buffered saline , pH 7.4, 150mM NaCl, 0.02% sodium azide and 50% glycerol.Store at -20 °C.Stable for 12 months from date of receipt

#### Note

The product is for research use only,not for use in diagnostic or therapeutic procedures.

# OmnimAbs.com

order@Omnimabs.com

506 N. GARFIELD AVE #210 ALHAMBRA, CA 91801

This product is for research use only and is not approved for use in humans or in clinical diagnosis. Primary Antibodies are guaranteed for 1 year from date of receipt