



Catalog: OM638951

Scan to get more validated information



IREB2

Catalog: OM638951

☐ 100 µl

Product profile

Product name	IREB2
Antibody Type	Primary Antibodies
Product description	Iron metabolism is essential for sustaining mammalian homeostasis. Iron uptake and distribution is a highly regulated process in mammalian cells that is monitored by two iron sensing proteins: IRP-1 and -2 (iron regulatory protein-1 and -2), also known as iron responsive element-binding protein-1 and -2 (IRE-BP-1 and -2) or aconitase 1 and 2. IRP-1 and IRP-2 are important soluble regulatory factors that mediate iron uptake and storage in mammalian cells. They are capable of either repressing translation or enhancing mRNA stability by associating with stem-loop motifs known as iron-responsive elements (IREs). IRPs respond to stress mediators, iron concentration and signaling factors, including nitrogen monoxide, cytokines and hydrogen peroxide.
Immunogen	Recombinant protein

Key Feature

Clonality	Polyclonal
Isotype	IgG
Host Species	Rabbit
Tested Applications	WB ,ICC ,IHC ,FC
Species Reactivity	Human Mouse Rat
Concentration	1 mg/mL.

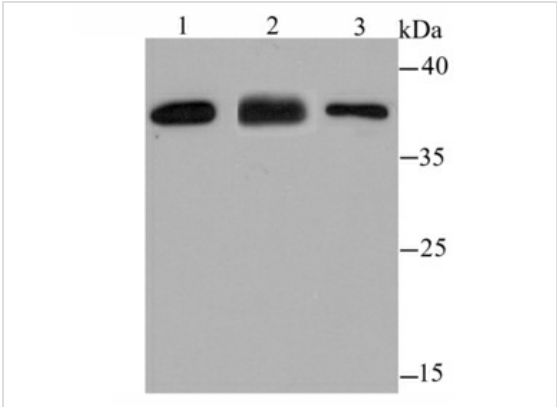
Target Information

Alternative Names	ACO3 antibody FLJ23381 antibody IRE BP2 antibody IRE-BP 2 antibody IREB 2 antibody IREB2 antibody IREB2_HUMAN antibody Iron regulatory protein 2 antibody iron responsive element binding protein 2 antibody Iron-responsive element-binding protein 2 antibody IRP 2 antibody IRP2 antibody IRP2AD antibody OTTHUMP00000185022 antibody
Molecular Weight(MW)	105/37 kDa

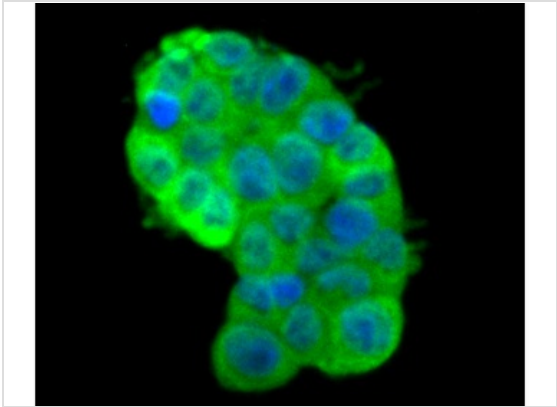
Database Links

SwissProt ID	P48200
	Q811J3
	Q62751

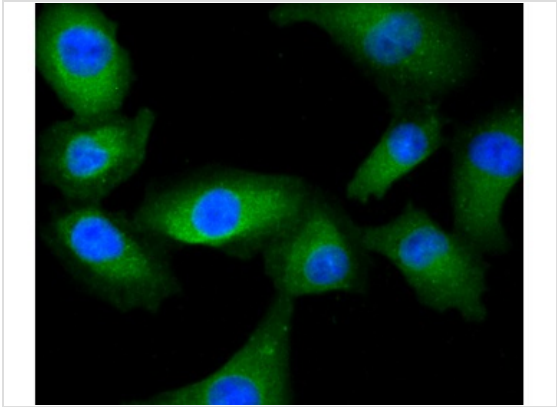
Application



Application
Fig1: Western blot analysis of IREB2 on different lysates using anti-IREB2 antibody at 1/500 dilution. Positive control□ Lane1: K562 Lane2: Mouse kidney tissue Lane3: Rat skin tissue

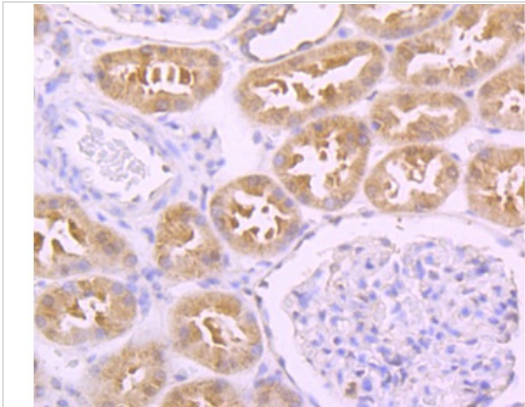
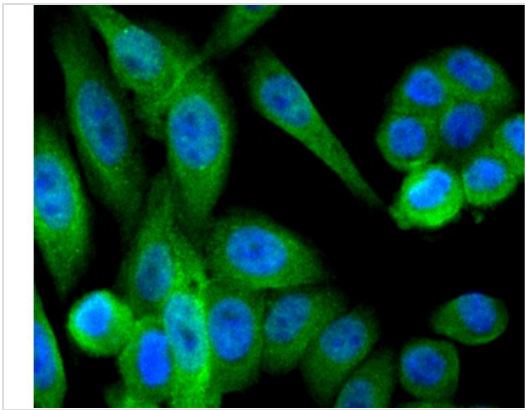


Application
Fig2: ICC staining IREB2 in 293T cells (green). The nuclear counter stain is DAPI (blue). Cells were fixed in paraformaldehyde, permeabilised with 0.25% Triton X100/PBS.

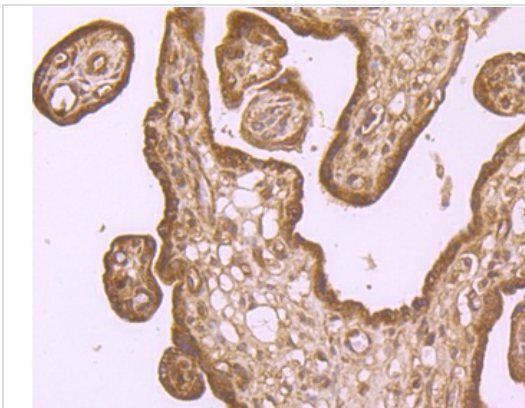


Application
Fig3: ICC staining IREB2 in A549 cells (green). The nuclear counter stain is DAPI (blue). Cells were fixed in paraformaldehyde, permeabilised with 0.25% Triton X100/PBS.

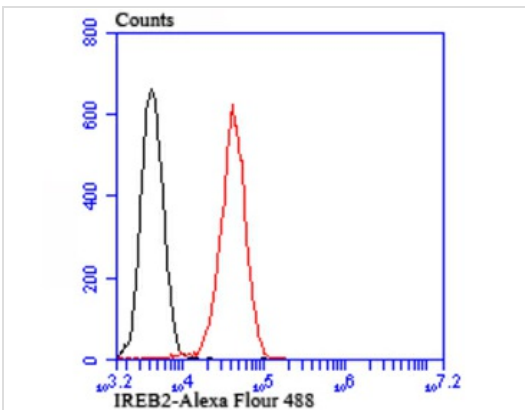
Application
Fig4: ICC staining IREB2 in HepG2 cells (green). The nuclear counter stain is DAPI (blue). Cells were fixed in paraformaldehyde, permeabilised with 0.25% Triton X100/PBS.



Application
 Fig5: Immunohistochemical analysis of paraffin-embedded human kidney tissue using anti-IREB2 antibody. Counter stained with hematoxylin.



Application
 Fig6: Immunohistochemical analysis of paraffin-embedded human placenta tissue using anti-IREB2 antibody. Counter stained with hematoxylin.



Application
 Fig7: Flow cytometric analysis of K562 cells with IREB2 antibody at 1/100 dilution (red) compared with an unlabelled control (cells without incubation with primary antibody; black).

Positive Control	K562, mouse kidney tissue lysate, rat skin tissue lysate, 293T, A549, HepG2, human kidney tissue, human placenta tissue.
Application Notes	WB: 1:500-1:1000 ICC: 1:50-1:200 IHC: 1:50-1:200 FC: 1:50-1:100

Additional Information

Form	Liquid
Storage Instructions	Store at +4°CAfter thawing. Aliquot store at -20°C or -80°C. Avoid repeated freeze / thaw cycles.
Storage Buffer	1*TBST (pH7.4), 0.5%BSA, 50%Glycerol. Preservative: 0.05% Sodium Azide.
Note	The product is for research use only,not for use in diagnostic or therapeutic procedures.

OmnimAbs.com

order@Omnimabs.com
506 N. GARFIELD AVE #210 ALHAMBRA, CA 91801
This product is for research use only and is not approved for use in humans or in clinical diagnosis. Primary Antibodies are guaranteed for 1 year from date of receipt