



Catalog: OM282319

Scan to get more validated information



# IRF6 Antibody

Catalog: OM282319

☐ 100ug

## Product profile

Product name	IRF6 Antibody
Antibody Type	Primary Antibodies
Product description	<p>IRF6 is a member of the interferon regulatory transcription factor (IRF) family. Family members share a highly-conserved N-terminal helix-turn-helix DNA-binding domain and a less conserved C-terminal protein-binding domain. Mutations in its gene can cause van der Woude syndrome and popliteal pterygium syndrome. This protein is involved in palate formation. The protein encoded by this gene shares strong similarity with <i>Saccharomyces cerevisiae</i> Cdc23, a protein essential for cell cycle progression through the G2/M transition. This protein is a component of anaphase-promoting complex (APC), which is composed of eight protein subunits and highly conserved in eucaryotic cells. APC catalyzes the formation of cyclin B-ubiquitin conjugate that is responsible for the ubiquitin-mediated proteolysis of B-type cyclins. This protein and 3 other members of the APC complex contain the TPR (tetratricopeptide repeat), a protein domain important for protein-protein interaction.<sup>1</sup>) Beausoleil, S.A., (2004) Proc. Natl. Acad. Sci. U.S.A. 101 (33), 12130-12135.</p>
Immunogen	Antibody produced in rabbits immunized with a synthetic peptide corresponding a region of human IRF6.

## Key Feature

Clonality	Polyclonal
Host Species	Rabbit
Tested Applications	ELISA ,WB
Species Reactivity	Dog Human Mouse Rat Zebra Fish
Concentration	1 mg/ml
Purification	Protein A

## Target Information

Gene Symbol	IRF6
Alternative Names	IRF6, LPS, OFC6, PIT, PPS, VWS, PPS1, VWS1

Molecular Weight(MW) 65 kDa, 69 kDa

## Database Links

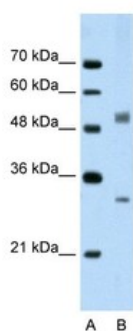
Entrez Gene 3664

Protein Accession NP\_006138

## Application

### Application

Antibody used in WB on Human Jurkat 2.5 ug/ml.



Positive Control 1) Cat. No. 1205 - Jurkat Cell Lysate

Application Notes IRF6 antibody can be used for detection of IRF6 by ELISA at 1:312500. IRF6 antibody can be used for detection of IRF6 by western blot at 2.5 µg/mL, and HRP conjugated secondary antibody should be diluted 1:50,000 - 100,000.:

## Additional Information

Form Liquid

Storage Instructions For short periods of storage (days) store at 4 °C. For longer periods of storage, store IRF6 antibody at -20 °C. As with any antibody avoid repeat freeze-thaw cycles.

Storage Buffer IgG in phosphate buffered saline , pH 7.4, 150mM NaCl, 0.02% sodium azide and 50% glycerol. Store at -20 °C. Stable for 12 months from date of receipt

Note The product is for research use only, not for use in diagnostic or therapeutic procedures.

# OmnimAbs.com

order@Omnimabs.com

506 N. GARFIELD AVE #210 ALHAMBRA, CA 91801

This product is for research use only and is not approved for use in humans or in clinical diagnosis. Primary Antibodies are guaranteed for 1 year from date of receipt