



Catalog: OM154062

Scan to get more validated information



IRF-1 Antibody (C-20)

Catalog: OM154062

☐ 100ul

Product profile

Product name	IRF-1 Antibody (C-20)
Antibody Type	Primary Antibodies
Modification Notes	Interferon regulatory factor-1 (IRF-1) and IRF-2 have been identified as novel DNA-binding factors that function as regulators of both type I interferon (interferon- α and β) and interferon-inducible genes. The two factors are structurally related, particularly in their N-terminal regions, which confer DNA binding specificity. In addition, both bind to the same sequence within the promoters of interferon- α and interferon- β genes. IRF-1 functions as an activator of interferon transcription, while IRF-2 binds to the same cis elements and represses IRF-1 action. IRF-1 and IRF-2 have been reported to act in a mutually antagonistic manner in regulating cell growth; overexpression of the repressor IRF-2 leads to cell transformation while concomitant overexpression of IRF-1 causes reversion. IRF-1 and IRF-2 are members of a larger family of DNA binding proteins that includes IRF-3, IRF-4, IRF-5, IRF-6, IRF-7, ISGF-3 γ p48 (a component of the ISGF-3 complex) and IFN consensus sequence-binding protein (ICSBP).

Key Feature

Clonality	Polyclonal
Isotype	IgG
Host Species	Rabbit
Tested Applications	WB ,IP ,IF ,FC ,ELISA
Species Reactivity	Human Mouse Rat
Concentration	1mg/ml
Purification	Affinity purified

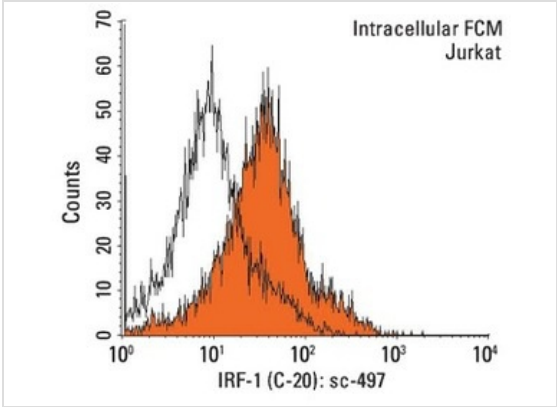
Target Information

Alternative Names	epitope mapping at the C-terminus of IRF-1 of human origin
Tissue Specificity	epitope mapping at the C-terminus of IRF-1 of human origin

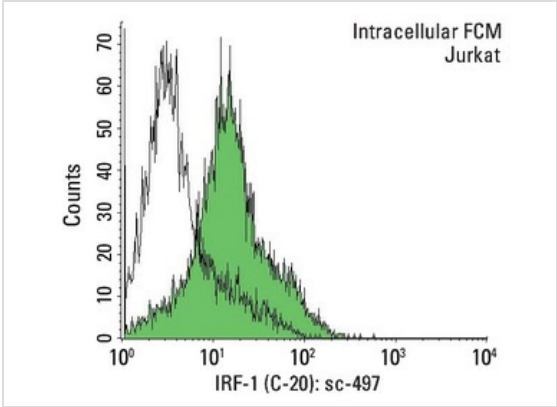
Database Links

Entrez Gene 3659

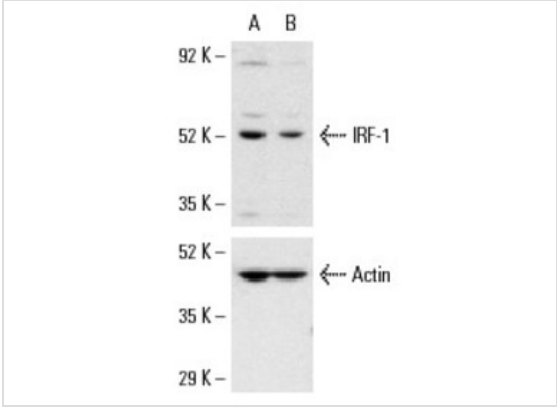
Application



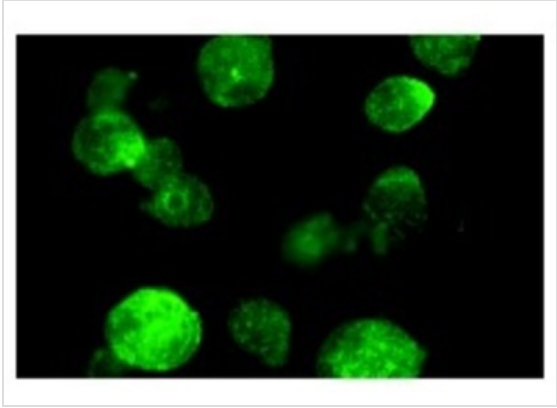
Application
Indirect, intracellular FCM analysis of fixed and permeabilized Jurkat cells stained with IRF-1 (C-20), followed by PE-conjugated goat anti-rabbit IgG: . Black line histogram represents the isotype control, normal rabbit IgG: .



Application
Indirect, intracellular FCM analysis of fixed and permeabilized Jurkat cells stained with IRF-1 (C-20), followed by FITC-conjugated goat anti-rabbit IgG: . Black line histogram represents the isotype control, normal rabbit IgG: .

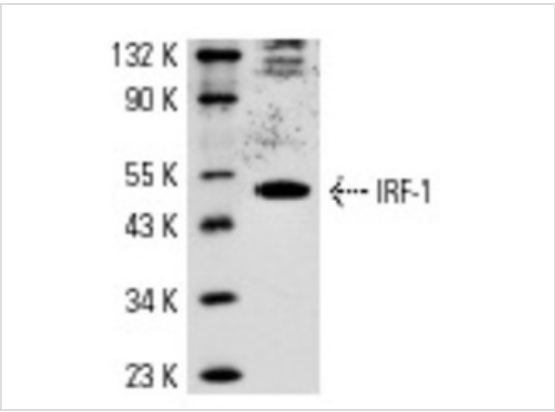


Application
Western blot analysis of IRF-1 expression in non-transfected control (A) and IRF-1 siRNA transfected (B) HeLa cells. Blot probed with IRF-1 (C-20): . Actin (I-19): used as specificity and loading control.



Application
Immunofluorescence staining of methanol-fixed Jurkat cells showing nuclear staining.

Application
Western blot analysis of IRF-1 expression in Jurkat whole cell lysate.



Application Notes recommended for detection of IRF-1 of human origin by WB, IP, IF, FCM, ELISA; also reactive with additional species, including equine, canine, bovine and porcine:

Additional Information

Form	Liquid
Storage Instructions	For short-term storage, store at 4° C. For long-term storage, aliquot and store at -20°C or below. Avoid multiple freeze-thaw cycles.
Storage Buffer	phosphate buffered saline , pH 7.4, 150mM NaCl, 0.02% sodium azide and 50% glycerol.
Note	The product is for research use only,not for use in diagnostic or therapeutic procedures.

OmnimAbs.com

order@Omnimabs.com
506 N. GARFIELD AVE #210 ALHAMBRA, CA 91801
This product is for research use only and is not approved for use in humans or in clinical diagnosis. Primary Antibodies are guaranteed for 1 year from date of receipt