



Catalog: OM282374

Scan to get more validated information



ISWI Antibody

Catalog: OM282374

☐ 100ug

Product profile

Product name	ISWI Antibody
Antibody Type	Primary Antibodies
Product description	The protein encoded by this gene is a member of the SWI/SNF family of proteins. Members of this family have helicase and ATPase activities and are thought to regulate transcription of certain genes by altering the chromatin structure around those genes. The protein encoded by this gene is a component of the chromatin remodeling and spacing factor RSF, a facilitator of the transcription of class II genes by RNA polymerase II. The encoded protein is similar in sequence to the Drosophila ISWI chromatin remodeling protein .1) Goldman, J.A., et al. J. Biol. Chem. 285(7):4645-4651(2010)
Immunogen	This ISWI antibody is generated from rabbits immunized with a KLH conjugated synthetic peptide between n 946-975 amino acids from the C-terminal region of human ISWI.

Key Feature

Clonality	Polyclonal
Isotype	Ig
Host Species	Rabbit
Tested Applications	FACS ,WB
Species Reactivity	Human
Concentration	1 mg/ml
Purification	Affinity purified

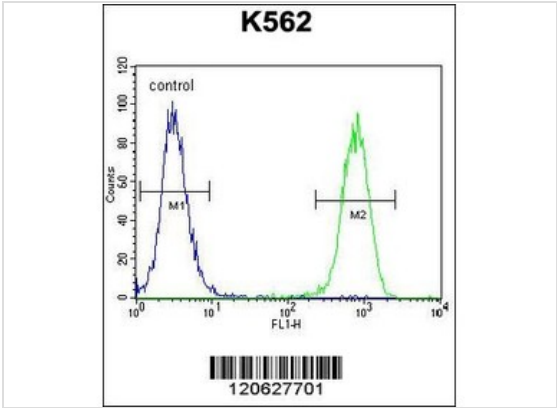
Target Information

Gene Symbol	SMARCA5
Alternative Names	SWI/SNF-related matrix-associated actin-dependent regulator of chromatin subfamily A member 5, SWI/SNF-related matrix-associated actin-dependent regulator of chromatin A5, 364-, Sucrose nonfermenting protein 2 homolog, hSNF2H, SMARCA5, SNF2H, WCRF135
Molecular Weight(MW)	122 kDa

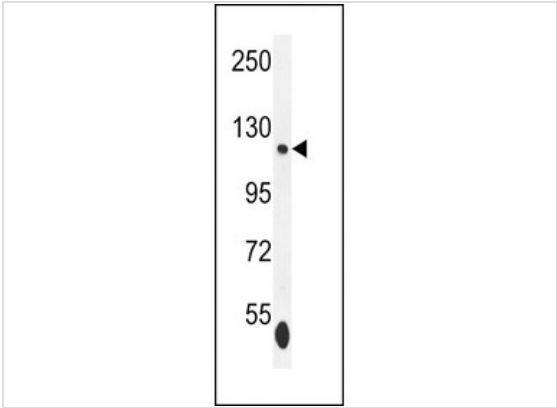
Database Links

Entrez Gene	8467
Protein Accession	O60264

Application



Application
Flow cytometric analysis of K562 cells (right histogram) compared to a negative control cell (left histogram).FIT C-conjugated goat-anti-rabbit secondary antibodies were used for the analysis.



Application
Western blot analysis in K562 cell line lysates (35ug/lane).

Application Notes For WB starting dilution is: 1:1000 For FACS starting dilution is: 1:10~50:

Additional Information

Form	Liquid
Storage Instructions	Store at 4°C for three months and -20°C, stable for up to one year. As with all antibodies care should be taken to avoid repeated freeze thaw cycles. Antibodies should not be exposed to prolonged high temperatures.
Storage Buffer	Supplied in PBS with 0.09% (W/V) sodium azide.
Note	The product is for research use only,not for use in diagnostic or therapeutic procedures.

506 N. GARFIELD AVE #210 ALHAMBRA, CA 91801

This product is for research use only and is not approved for use in humans or in clinical diagnosis. Primary Antibodies are guaranteed for 1 year from date of receipt

